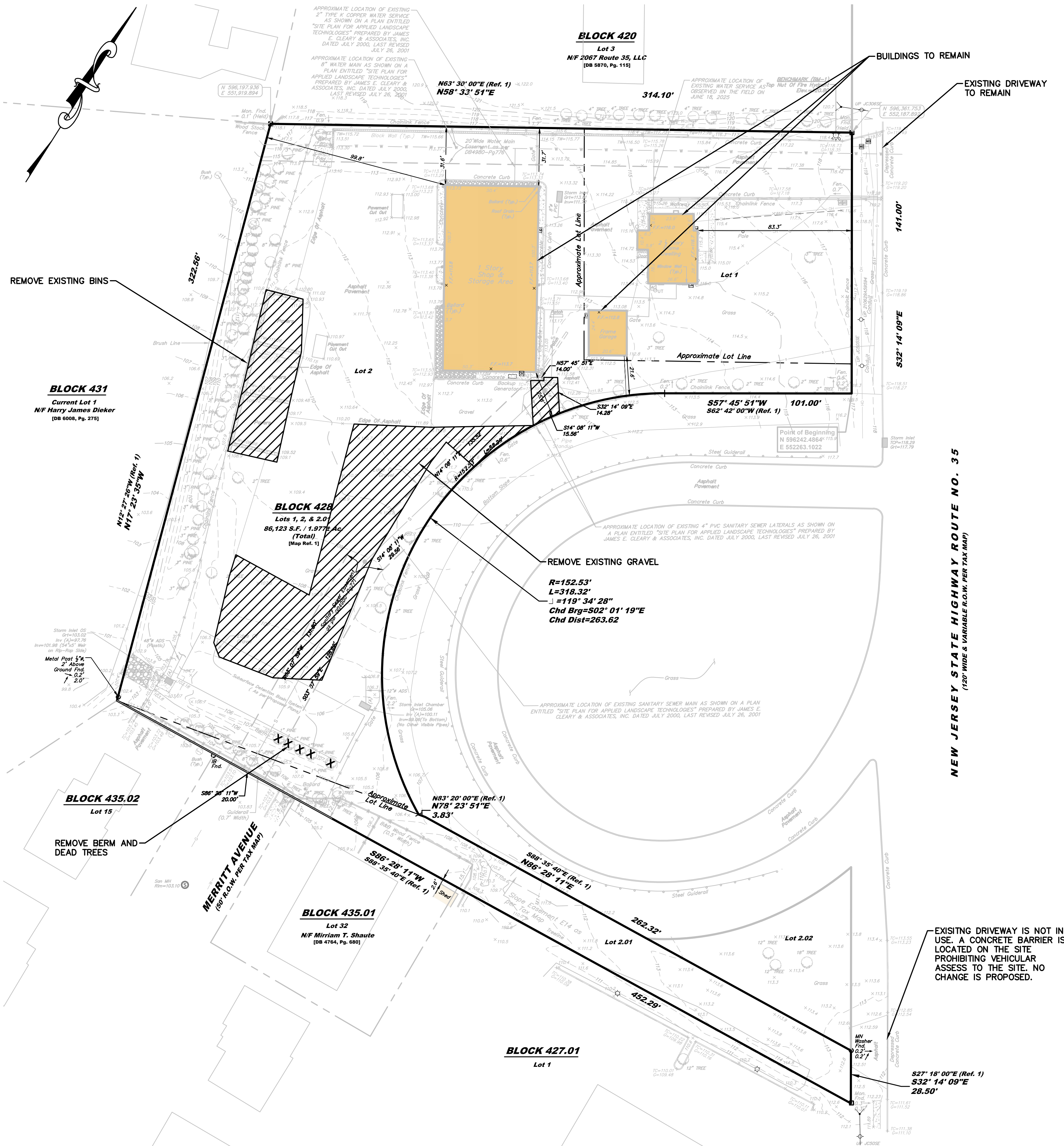




C:\18K\18900\18937 - Bulk Yard 35\18937.003 - DEMO.dwg Layout1

COPYRIGHT © 2025, FRENCH & PARRELLO ASSOCIATES - THE COPYING OR REUSE OF THIS DOCUMENT, OR PORTIONS THEREOF, WITHOUT THE WRITTEN PERMISSION OF FRENCH & PARRELLO ASSOCIATES, PA IS PROHIBITED. DUE TO INHERENT ERRORS IN REPRODUCTION METHODS, ERRORS MAY OCCUR WHEN SCALING THIS DRAWING



#### EXISTING LEGEND:

x 123.45	SPOT ELEVATION	GV	GAS VALVE	---	BOUNDARY LINE
x TC=123.45	TOP OF CURB	GM	GAS METER	---	RIGHT-OF-WAY LINE
x TW=123.45	TOP OF WALL	S	SIGN	---	ADJACENT PROPERTY LINE
x FF=123.4	FINISHED FLOOR ELEVATION	UP	UTILITY POLE	---	MINOR CONTOUR
[Symbol]	CURB DRAINAGE INLET	EW	ELECTRIC METER	---	MAJOR CONTOUR
[Symbol]	DRAINAGE INLET	EB	ELECTRIC BOX	---	CHAINLINK FENCE
[Symbol]	DRAINAGE MANHOLE	LP	FLAG POLE	---	WOOD FENCE
[Symbol]	SANITARY SEWER MANHOLE	ST	MAIL BOX	---	GUIDERAIL
[Symbol]	UTILITY CLEANOUT	UT	SANITARY CLEANOUT	---	UNDERGROUND STORM DRAINAGE PIPE
[Symbol]	SANITARY CLEANOUT	WV	WATER VALVE	---	UNDERGROUND SANITARY PIPE
[Symbol]	WATER VALVE	[Symbol]	FIRE HYDRANT	---	OVERHEAD ELECTRIC LINE
[Symbol]	FIRE HYDRANT	[Symbol]	WATER BOX	---	UNDERGROUND GAS LINE
[Symbol]	WATER BOX	[Symbol]	WATER METER	---	UNDERGROUND WATER LINE

#### DEMOLITION LEGEND:

[Hatched Box]	REMOVE EXISTING FEATURE
[X]	REMOVE EXISTING TREE

1	07/22/2025	REVISED PER CLIENT COMMENTS	KAN	LBB
No.	Date	Revision	Revised By	Checked By
30 0 30 60				
SCALE : 1" = 30'				



JELENA BALORDA-BARONE, P.E.  
PROFESSIONAL ENGINEER, N.J. LIC. No. 44465

EXISTING CONDITIONS AND DEMOLITION PLAN  
FOR  
PRELIMINARY AND FINAL MAJOR SITE PLAN  
FOR  
TENON AUTO SERVICE INC.  
BLOCK 428 LOTS 1, 2, & 2.01  
BOROUGH OF SAYREVILLE  
MIDDLESEX COUNTY, NEW JERSEY

DATE: 02/12/2025	DESIGNED BY: KAN	SCALE: 1" = 30'	PROJECT NUMBER: 18937.003
DRAWN BY: KAN	CHECKED BY: LB	FIELD BOOK	SHEET: 2 of 8

DATE: 02/12/2025	DESIGNED BY: KAN	SCALE: 1" = 30'	PROJECT NUMBER: 18937.003
DRAWN BY: KAN	CHECKED BY: LB	FIELD BOOK	SHEET: 3 of 8

## PLANT SCHEDULE

CODE	QTY	BOTANICAL NAME	COMMON NAME	SIZE	CONTAINER	MATURE SIZE	KEY	REMARKS
<b>TREES</b>								
GB	2	GINKGO BILOBA	MAIDENHAIR TREE	2.5'-3" CAL.	B&B	50'-80' HEIGHT, 30'-40' SPREAD		MALE SPECIES ONLY
GI	8	GLEDITSIA TRIACANTHOS INERMIS	THORNLESS HONEY LOCUST	2.5'-3" CAL.	B&B	40'-60' HEIGHT, 25'-30' SPREAD	*N#	YELLOW FALL FOLIAGE
LI	5	LAGERSTROEMIA INDICA 'DYNAMITE'	RED CRAPE MYRTLE MULTI-TRUNK	6'-8" HEIGHT	B&B	15'-20' HEIGHT, 10'-15' SPREAD	#	ORNAMENTAL TREE, RED BLOOM
UA	1	ULMUS AMERICANA	AMERICAN ELM	2.5'-3" CAL.	B&B	60'-80' HEIGHT, 40'-70' SPREAD	*N&	YELLOW FALL FOLIAGE
<b>EVERGREEN TREES</b>								
IO	26	ILEX OPACA	AMERICAN HOLLY	6'-7" HEIGHT	B&B	15'-30' HEIGHT, 10'-20' SPREAD	N#	RED BERRIES IN WINTER
JE	44	JUNIPERUS VIRGINIANA 'EMERALD SENTINEL'	EASTERN REDCEDAR	6'-7" HEIGHT	B&B	15'-25' HEIGHT, 7'-10' SPREAD	N#	NARROW EVERGREEN TREE
IOM	1	MALE ILEX OPACA	AMERICAN HOLLY	6'-7" HEIGHT	B&B	15'-30' HEIGHT, 10'-20' SPREAD	N#	RED BERRIES IN WINTER
PP	17	PICEA PUNGENS	COLORADO SPRUCE	6'-7" HEIGHT	B&B	30'-60' HEIGHT, 10'-20' SPREAD	N#	BLUE FOLIAGE
TP	59	THUJA PLICATA	GREEN GIANT ARBORVITAE	6'-7" HEIGHT	B&B	40'-60' HEIGHT, 12'-18' SPREAD	N&	NARROW EVERGREEN TREE
<b>SHRUBS</b>								
IC	19	ILEX CRENATA 'CONVEXA'	CONVEX-LEAVED JAPANESE HOLLY	2'-3" HEIGHT	B&B	5'-8" HEIGHT AND SPREAD		EVERGREEN SHRUB
VD	11	VIBURNUM DENTATUM	VIBURNUM	2'-3" HEIGHT	B&B	5'-8" HEIGHT AND SPREAD	N#	WHITE FLOWERS, MAY, ORANGE-RED FALL COLOR

KEY:  
N# = NATIVE PLANT OF NORTH AMERICA  
& = SALT SPRAY TOLERANT  
# = SPRING INSTALLATION ONLY  
\* = SELDOM OR RARELY DAMAGED BY DEER AS PER RUTGERS AG AGENCY (HTTP://NJAES.RUTGERS.EDU)

## PLANTING NOTES

- THE LANDSCAPE PLANS SHALL BE USED FOR LANDSCAPING PURPOSES ONLY. THE CONTRACTOR SHOULD EXAMINE ALL ENGINEERING DRAWINGS AND FIELD CONDITIONS FOR EXACT LOCATIONS OF UTILITIES, DRAINS, ETC., AND NOTIFY THE OWNER ABOUT ANY DISCREPANCIES BEFORE STARTING WORK.
- ALL PLANTING SHALL BE IN CONFORMANCE WITH THE AMERICAN NURSERYMEN'S ASSOCIATION STANDARDS, CURRENT EDITION. ALL PLANT MATERIALS USED SHALL BE TRUE TO NAME AND SIZE IN CONFORMITY WITH THE CURRENT EDITION OF THE AMERICAN STANDARD OF NURSERY STOCK AND SHALL BE TYPICAL OF THEIR SPECIES OR VARIETY. ALL PLANTS SHALL HAVE NORMAL, WELL-DEVELOPED BRANCHES AND VIGOROUS ROOT SYSTEMS. THEY SHALL BE SOUND, HEALTHY, VIGOROUS, FREE FROM DEFECTS, DISFIGURING KNOTS, ABRASIONS OF THE BARK, SUN SCALD INJURIES, PLANT DISEASES, INSECT EGGS, BORERS, AND ALL OTHER FORMS OF INFECTION. ALL PLANTS SHALL BE NURSERY GROWN. ALL PLANT MATERIAL SHALL BE TAGGED AT THE NURSERY SOURCE AND APPROVED BY THE PROJECT LANDSCAPE ARCHITECT PRIOR TO PLANTING.
- THE CONTRACTOR WILL BE HELD RESPONSIBLE FOR ANY DAMAGE TO EXISTING UTILITIES CAUSED BY ANY PERSON, VEHICLE, EQUIPMENT, OR TOOLS RELATED TO THE EXECUTION OF THIS CONTRACT.
- EXCAVATION NEAR EXISTING UTILITIES TO BE CAREFULLY PERFORMED BY HAND.
- ALL PLANT MATERIAL SHALL BEAR THE SAME RELATION TO FINISHED GRADE AS IT BORE TO EXISTING GRADE AT THE NURSERY. ALL PLANT MATERIAL SHALL BE PLANTED SO THAT THE TOP OF THE ROOTBALL IS NO HIGHER OR LOWER THAN THE EXISTING/FINISHED GRADE DEPENDENT UPON SOIL CONDITIONS.
- IN THE EVENT THAT PLANTING DISCREPANCIES OR MATERIAL OMISSIONS OCCUR IN THE PLANT MATERIALS LIST, THE LANDSCAPING PLAN SHALL GOVERN. THE USE AND PLANTING OF BARE ROOT MATERIAL SHALL BE PROHIBITED.
- ANY SUBSTITUTIONS OF PLANT MATERIAL WITH REGARDS TO SIZE, SPECIES, VARIETY, ETC., SHALL BE SUBJECT TO APPROVAL BY THE OWNER.
- PLANTS SHALL ONLY BE INSTALLED WHEN THE SOIL IS FROST FREE.
- UNDER NO CIRCUMSTANCES SHOULD THE MAIN LEADER OF A DECIDUOUS OR EVERGREEN TREE BE TOPPED. DECIDUOUS TREES SHALL BE PRUNED BY REMOVAL OF 1/3 OF THE INTERIOR BRANCHING STRUCTURE WITHOUT ALTERING THE ORIGINAL BRANCHING FORM OF THE TREE.
- ALL DISTURBED AREAS, NOT BEING PLANTED, SHALL BE TOPSOILED 4" THICK, FERTILIZED, SEED, AND MULCHED WITH APPROVED MULCH. TOPSOIL SHALL BE NATURAL FRIABLE, FERTILE SOIL CHARACTERISTIC OF PRODUCTIVE SOIL IN THE VICINITY. IT SHALL BE FREE OF LUMPS OF CLAY, STONES, ROOTS, AND OTHER FOREIGN MATTER.
- CUT AND LOOSEN SISAL HEMP CHOKE TIE AROUND TREE TRUNK. ALL PLASTIC MATERIAL SHALL NOT BE PERMITTED. ALL WIRE BASKETS AND PLASTIC LINERS OF CONTAINER GROWN TREES AND SHRUBS MUST BE COMPLETELY REMOVED. NO CONTAINER GROWN MATERIAL WILL BE ACCEPTED IF IT IS ROOT BOUND AND NOT ROOT PRUNED. THE USE OF NYLON TWINE ON ROOT BALLS IS PROHIBITED.
- THE DEPTH OF PLANT PITS SHALL BE INCREASED BY 12" THROUGH THE ADDITION OF LOOSE AGGREGATE (3/4" TO 1 1/2" DIAMETER) WHEREVER POOR DRAINAGE OCCURS OR WHERE DIRECTED BY THE OWNER.
- GUY WIRES SHALL BE LOCATED SO THAT THEY WILL NOT PULL CROTCH APART. GUY WIRES TO SECOND BRANCH (MINIMUM ONE-THIRD HEIGHT OF TREE). USE THREE GUYS PER TREE UNLESS OTHERWISE INDICATED. ALL TREE STAKES, GUY WIRES, TREE WRAPPING AND SAUCERS SHALL BE REMOVED AFTER ONE GROWING SEASON.
- PLANTS PLANTED IN ROWS SHALL BE MATCHED SPECIMENS AND BE UNIFORM IN SIZE AND FORM.
- IN THE EVENT THAT EXISTING VEGETATION IS REMOVED BEYOND THE CLEARING LIMITS SHOWN ON THE PLANS, ADDITIONAL PLANTING MUST BE PROVIDED AS APPROVED BY THE OWNER AND AT NO COST TO THE OWNER.
- PLANTING BACKFILL MIXTURE SHALL CONSIST OF ONE PART TOPSOIL, ONE PART NATIVE SOIL AND ONE PART PEAT MOSS. NOTE THAT PLANTING MIXTURE MAY CHANGE BASED UPON SOIL CONDITIONS.
- MULCH, 4" IN DEPTH, SHALL BE TREATED SHREDDED HARDWOOD BARK NOT EXCEEDING 2" IN GREATEST DIMENSION. MULCH SHALL BE INSTALLED WITH A MAXIMUM OF ONE (1) INCH WITHIN ONE (1) FOOT ON THE TREE'S ROOT FLARE. A NON-PLASTIC WEED RETARDANT BARRIER SHALL BE USED IN ALL NON GRASSED AREAS. MULCH SHALL BE FINE GRADED FOR A PLEASING APPEARANCE. THE USE OF MARBLE OR PINE BARK CHIPS IS PROHIBITED. MULCH VOLCANOES ARE NOT PERMITTED.
- ALL PLANT MATERIAL SHALL BE GIVEN A MINIMUM OF 5 GALLONS OF WATER AT THE TIME OF INSTALLATION AND SHALL BE WATERED AT INTERVALS DURING ESTABLISHMENT TO ENSURE ADAPTATION TO THE SITE. PRIOR TO THE INSTALLATION OF THE PLANT MATERIAL, THE CONTRACTOR SHALL FILL EACH PLANTING PIT WITH WATER AND ALLOW IT TO FULLY PERCOLATE INTO THE GROUND PRIOR TO PLACEMENT OF THE PLANT. THE CONTRACTOR SHALL NOTIFY EITHER THE OWNER OR PROJECT LANDSCAPE ARCHITECT OF ANY PERCOLATION PROBLEMS PRIOR TO INSTALLATION.
- PREFERRED PLANTING TIME PERIODS ARE FROM SEPTEMBER 1 TO NOVEMBER 30 OR MARCH 20 TO MAY 31. NO PLANTING SHALL BE EXECUTED DURING ABNORMALLY HOT WEATHER NOR WHEN THE GROUND IS FROZEN.
- THE CONTRACTOR SHALL REMOVE ALL DAMAGED BRANCHES AND NURSERY TAGS AT THE TIME OF INSTALLATION.
- ALL TURF SHALL RECEIVE FERTILIZER CONSISTING OF 10-6-4 (50% ORGANIC) COMPOSITION, APPLIED AT 3 LB. PER 100 SQ. FT. SLOW RELEASE FERTILIZER TABLETS OR PACKETS OF 20-10-5 COMPOSITION SHALL BE ADDED TO ALL PLANTING PITS AT THE FOLLOWING RATIOS: 1 PER SHRUB, 2 PER DECIDUOUS OR EVERGREEN TREES, UP TO 2" IN CALIPER AND 3 FOR DECIDUOUS AND EVERGREEN TREES ABOVE 2" IN CALIPER.
- EACH TREE THAT IS PLANTED MUST BE TAGGED WITH A DURABLE LABEL BEARING THE GENUS, SPECIES, VARIETY, PLANT PATENT NUMBER (IF APPLICABLE) AND CULTURAL REQUIREMENTS AND MUST BE INSPECTED PRIOR TO REMOVAL.
- CONTRACTOR TO BE RESPONSIBLE FOR SEEDING AREAS BEING DISTURBED BY CONSTRUCTION. SEED MIXTURE TO BE IN ACCORDANCE WITH SOIL CONSERVATION DISTRICT'S STANDARDS.
- ALL TREES FOUR (4) FEET OR GREATER IN HEIGHT SHALL BE STAKED PER MUNICIPALITY DESIGN STANDARDS.
- ALL PLANT MATERIAL SHALL BE GUARANTEED FOR PERIOD OF TWO YEARS FROM THE TIME OF PLANTING.

## LEGEND:

PROPOSED AREA TO BE SEEDED AND/OR RESEED

EXISTING LANDSCAPING/GRASS AREA

EXISTING TREE TO BE PROTECTED

- REMOVE SUCKER SHOOTS AT BASE OF TREE.
- MAKE CLEAN CUTS ON OLD STUBS, IF PRESENT.
- REMOVE ENTIRE SUPPLY OF TWIGS AND BUDS ON TRUNK.
- REMOVE LOWER BRANCH WHERE AN OVERLYING BRANCH OCCUPIES ABOUT THE SAME AREA.
- SHAPE TREE BY REMOVING INJURED AN MISSHAPEN BRANCHES.
- REMOVE CROSS BRANCHES AND THOSE DEVELOPING INTO SECONDARY LEADERS.

## NOTES:

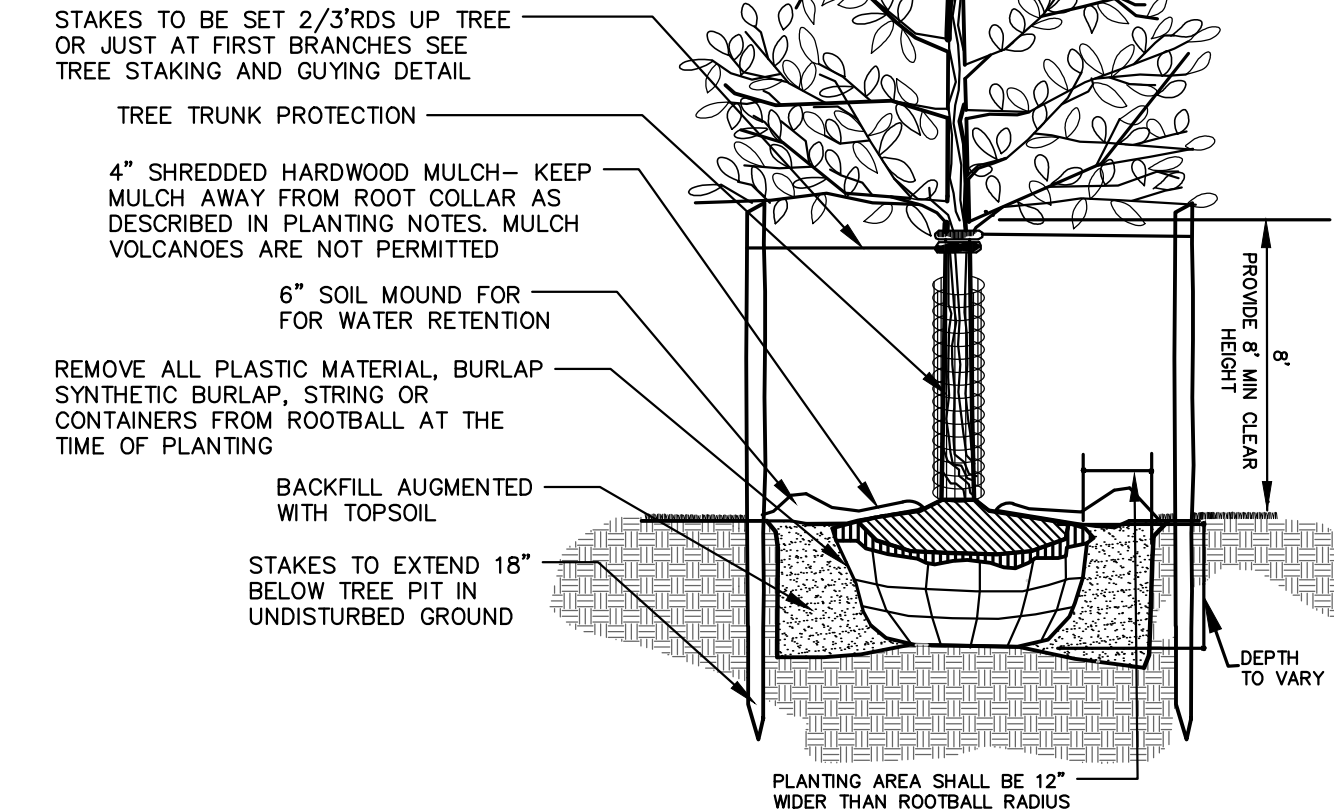
- BRANCHES IN DASHED LINES INDICATE THOSE TO BE REMOVED.
- CENTRAL LEADER SHALL NOT BE CUT OR DAMAGED.

## TREE PRUNING DETAIL

NOT TO SCALE

## NOTES:

- ALL TREES UNDER 3" IN CALIPER SHALL BE STAKED  
ALL TREES 3" IN CALIPER AND GREATER SHALL BE GUYED
- TREE SHALL BEAR SAME RELATION TO FINISHED GRADE AS IT BORE TO PREVIOUS GRADE
- SET STAKES VERTICAL AND AT SAME HEIGHT
- REMOVE ALL WIRE BASKETS PRIOR TO BACKFILLING THE PLANTING PIT.
- ALL WIRE BASKETS SHALL BE REMOVED PRIOR TO BACKFILLING THE PLANTING PIT.

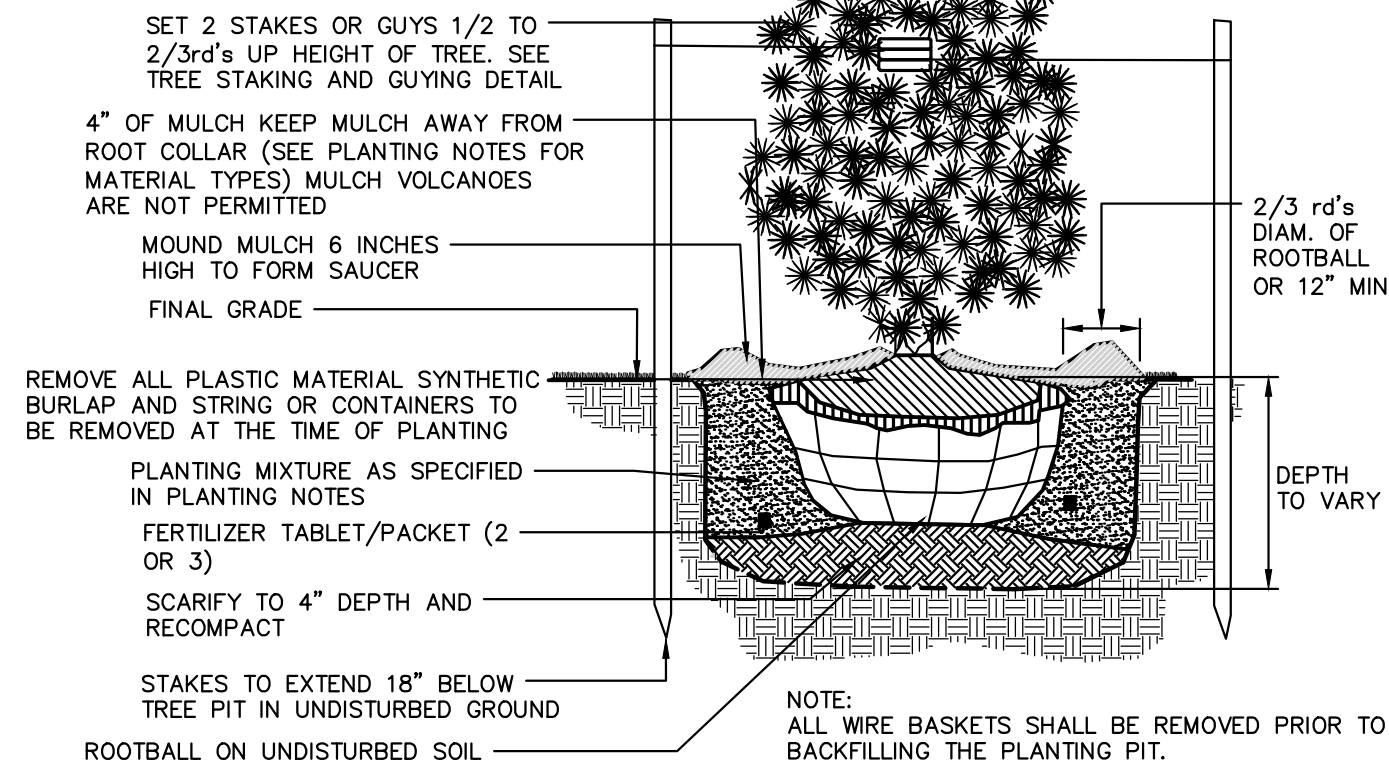


## DECIDUOUS TREE PLANTING DETAIL

NOT TO SCALE

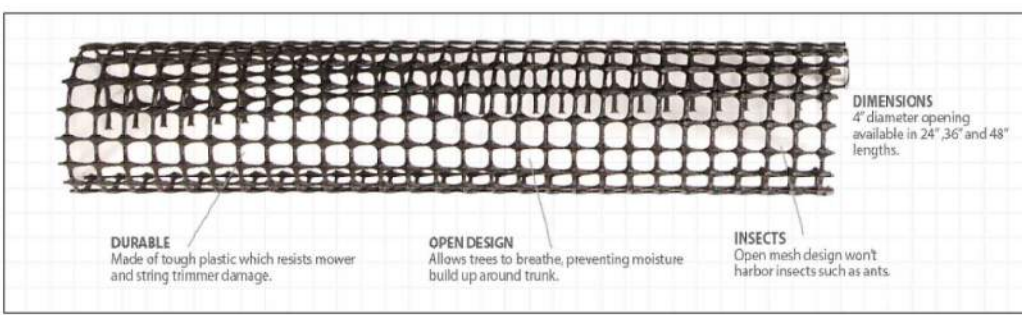
## NOTES:

- ALL EVERGREEN TREES TO BE STAKED AND/OR GUYED AS SPECIFIED IN THE DETAIL AND THE PLANTING NOTES
- TREE SHALL BEAR SAME RELATION TO FINISHED GRADE AS IT BORE TO PREVIOUS GRADE.
- NEVER CUT LEADERS.
- PRUNE ONLY TO REMOVE DAMAGED OR BROKEN BRANCHES. SEE TREE PRUNING DETAIL.
- STAKES SHALL BE WHITE OR RED CEDAR, OAK, OR LOCUST TREATED WITH ACCEPTABLE WOOD PRESERVATIVE



## EVERGREEN TREE PLANTING DETAIL

NOT TO SCALE



## Specs

- Specs
- Material: HDPE
  - Diameter: 4 inches
  - Length: 10 feet
  - Bundle: 100 feet

## Product Features

- Product Features
- Double layer polyethylene construction
  - UV treated

## TREE TRUNK PROTECTION DETAIL

NOT TO SCALE

## NOTE:

4" LONG, 4" DIAMETER TREE TRUNK PROTECTION MESH SHALL BE MANUFACTURED BY A.M. LEONARD  
(https://www.amleo.com/leonard-rigid-plastic-mesh-tree-guards-4-inch-diameter/p/vp-bg/1) OR APPROVED EQUAL.

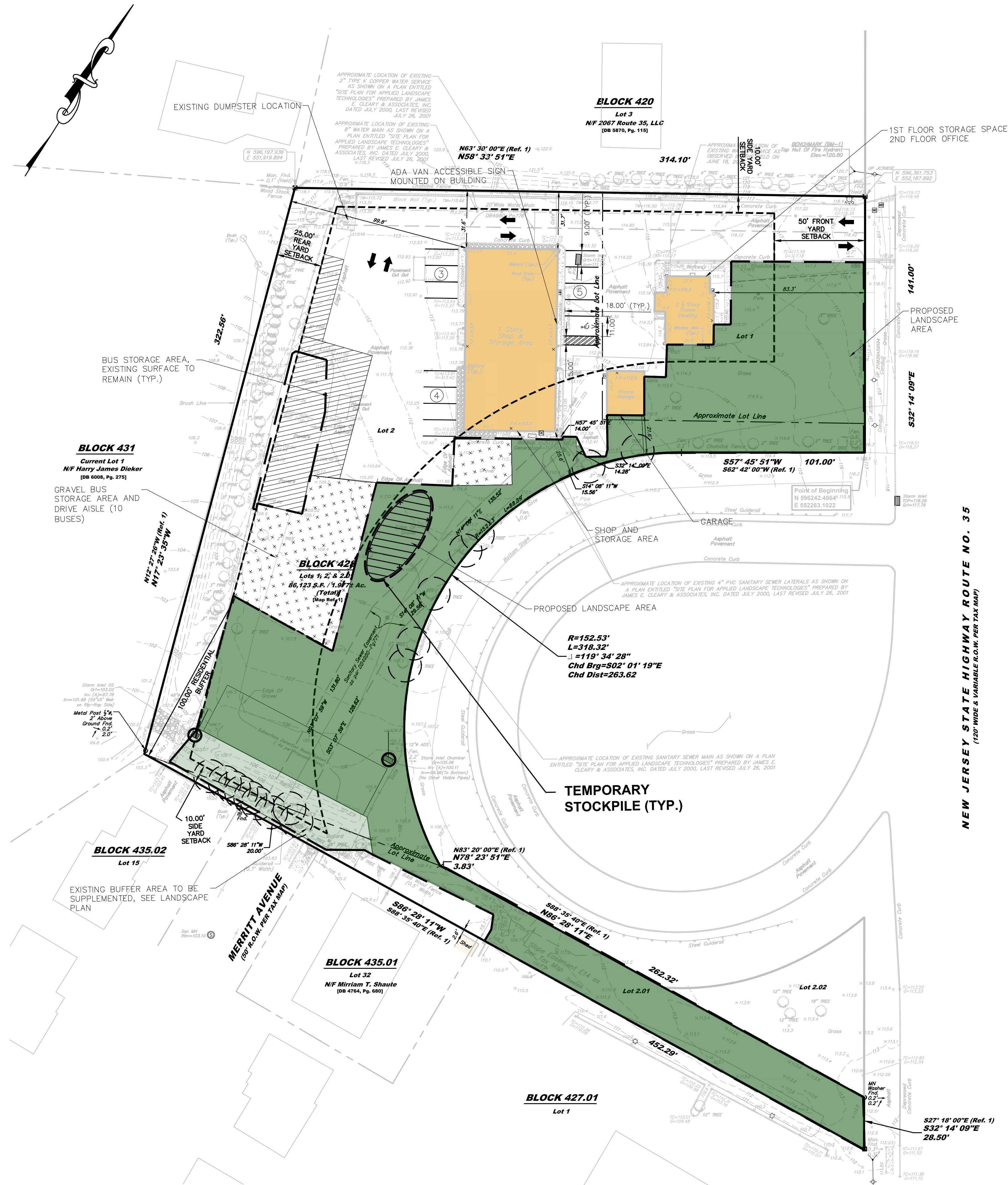
## SEEDING SPECIFICATIONS:

THE CONTRACTOR WILL BE RESPONSIBLE FOR RE-ESTABLISHING ALL AREAS DISTURBED BY CONSTRUCTION. THE SEEDING/SODDING WILL BE IN ACCORDANCE WITH FREEHOLD COUNTY SOIL CONSERVATION DISTRICT STANDARDS. SPECIFIC SEED/SOD TYPES SHALL BE USED AS FOLLOWS:

- ALL DISTURBED AREAS SHALL BE SEEDED AND/OR SODDED AS SHOWN ON THE LANDSCAPE PLAN WITH ERNST ATHLETIC FIELD MIXTURE OR APPROVED EQUAL.
- SLOPED AREAS 3:1 AND GREATER SHALL RECEIVE IN COMBINATION WITH THE ABOVE SPECIFIED GRASS MIXTURE AN EROSION CONTROL MATTING BY NORTH AMERICAN GREEN, OR APPROVED EQUAL.

## UNDERGROUND UTILITY NOTE:

DO NOT INSTALL PROPOSED PLANT MATERIAL DIRECTLY ON TOP OF ANY PROPOSED OR EXISTING UNDERGROUND UTILITIES. FIELD ADJUST MATERIAL AS NEEDED AS DIRECTED BY THE PROJECT PROFESSIONAL TO ACCOMMODATE ANY POTENTIAL CONFLICTS.

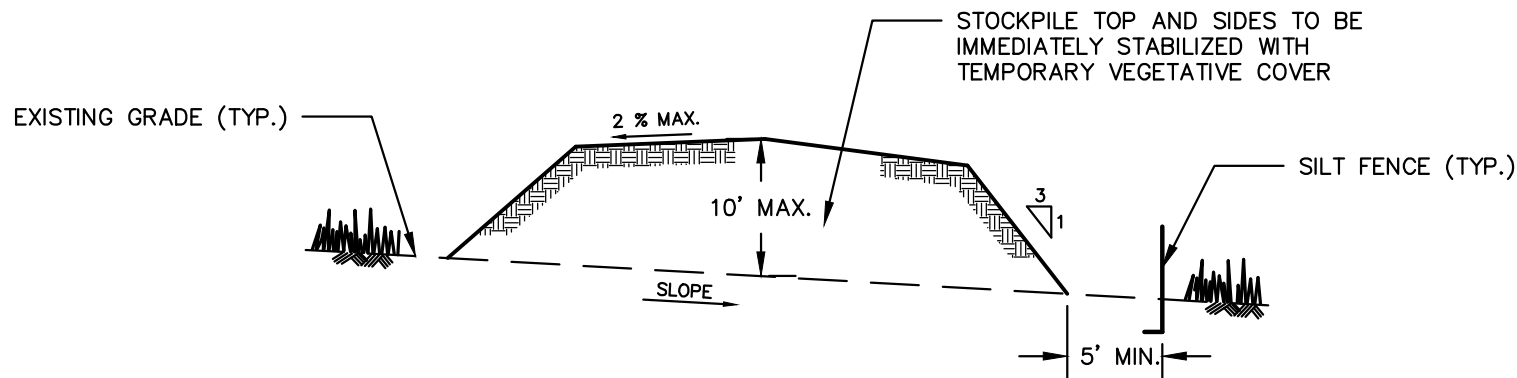


AREA OF DISTURBANCE:  
39,597 S.F. = 0.91 AC

EXISTING PAVED DRIVEWAY TO BE USED AS A CONSTRUCTION ENTRANCE. CONTRACTOR TO SWEEP AND REMOVE SILT AND SEDIMENT ON A DAILY BASIS TO CONTROL THE TRACKING OF SILT ANDS EDIMENT FROM GOING OFF-SITE.

LEGEND

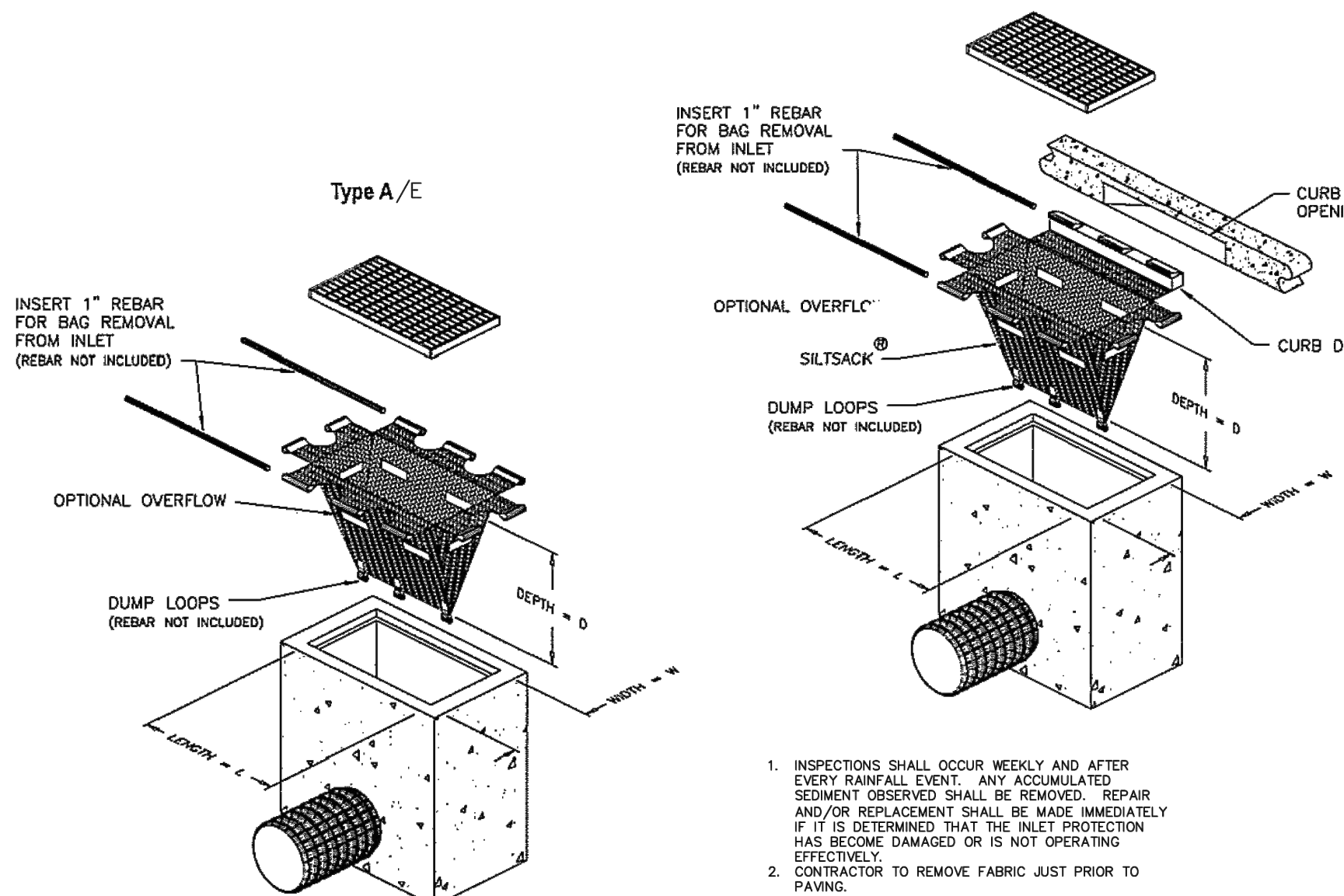
- LIMIT OF DISTURBANCE
- SILT FENCE
- INLET PROTECTION
- TREE PROTECTION
- STOCKPILE



NOTES:

- TOPSOIL STOCKPILES TO BE PLACED AS DETERMINED IN THE FIELD.
- STOCKPILE NOT TO BE PLACED IN AREA WITH CONCENTRATED FLOW, WETLANDS, EXTREME SLOPE OR WITHIN 100' OF A NATURAL STREAM.

TEMPORARY STOCKPILE  
NOT TO SCALE



INLET PROTECTION DETAIL  
NOT TO SCALE

SOIL COMPACTION MITIGATION NOTE

AS DETERMINED BY THE STATE POLICY MAP, THE PROJECT AREA FALLS WITHIN THE METROPOLITAN PLANNING AREA (PA1). UNDER EXISTING CONDITIONS, THE SITE IS NOT COVERED IN WOODY VEGETATION NOR REGROWTH. IN ACCORDANCE WITH NEW JERSEY STANDARD FOR LAND GRADING (REVISED 2017), NON WOODY VEGETATED PA1 AREAS FALL UNDER THE SOIL COMPACTION EXEMPTION LIST AS A "URBAN REDEVELOPMENT" AND IS DEFINED BY NDEP AS "PREVIOUSLY DEVELOPED".

No.	Date	Revision	Revised By	Checked By
1	07/22/2025	REVISED PER CLIENT COMMENTS	KAN	LBB



New Jersey ▲ New York ▲ Pennsylvania ▲ Georgia

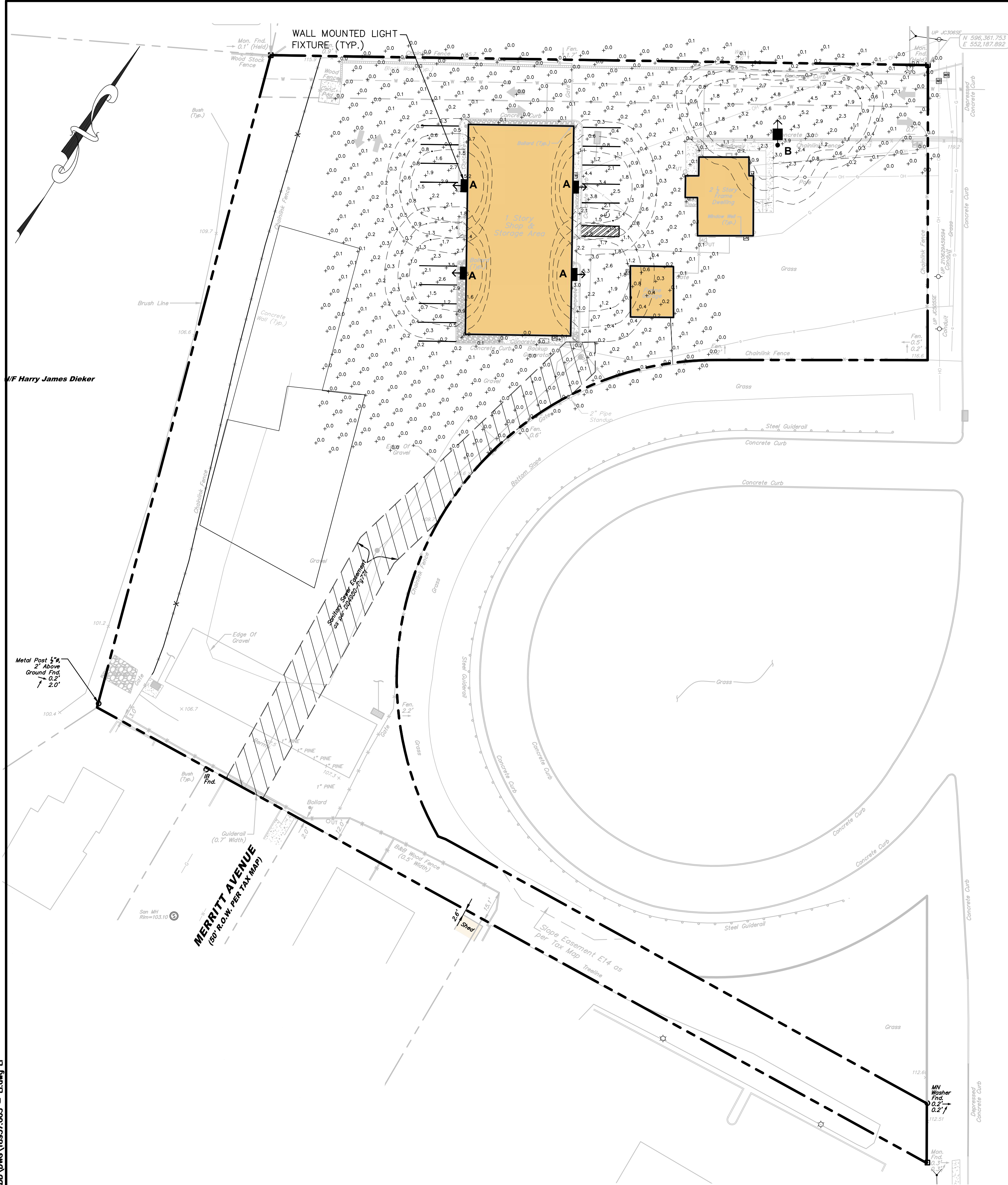
**JELENA BALORDA-BARONE, P.E.**  
PROFESSIONAL ENGINEER, N.J. LIC. No. 44465

**SOIL EROSION AND SEDIMENT CONTROL PLAN**  
FOR  
**PRELIMINARY AND FINAL MAJOR SITE PLAN**  
FOR  
**TENON AUTO SERVICE INC.**  
BLOCK 428 LOTS 1, 2, & 2.01  
BOROUGH OF SAYREVILLE  
MIDDLESEX COUNTY, NEW JERSEY

DATE:	DESIGNED BY:	SCALE:	PROJECT NUMBER:
02/12/2025	KAN		18937.003
DRAWN BY:	CHECKED BY:	FIELD BOOK	SHEET:
KAN	LB		5 of 8

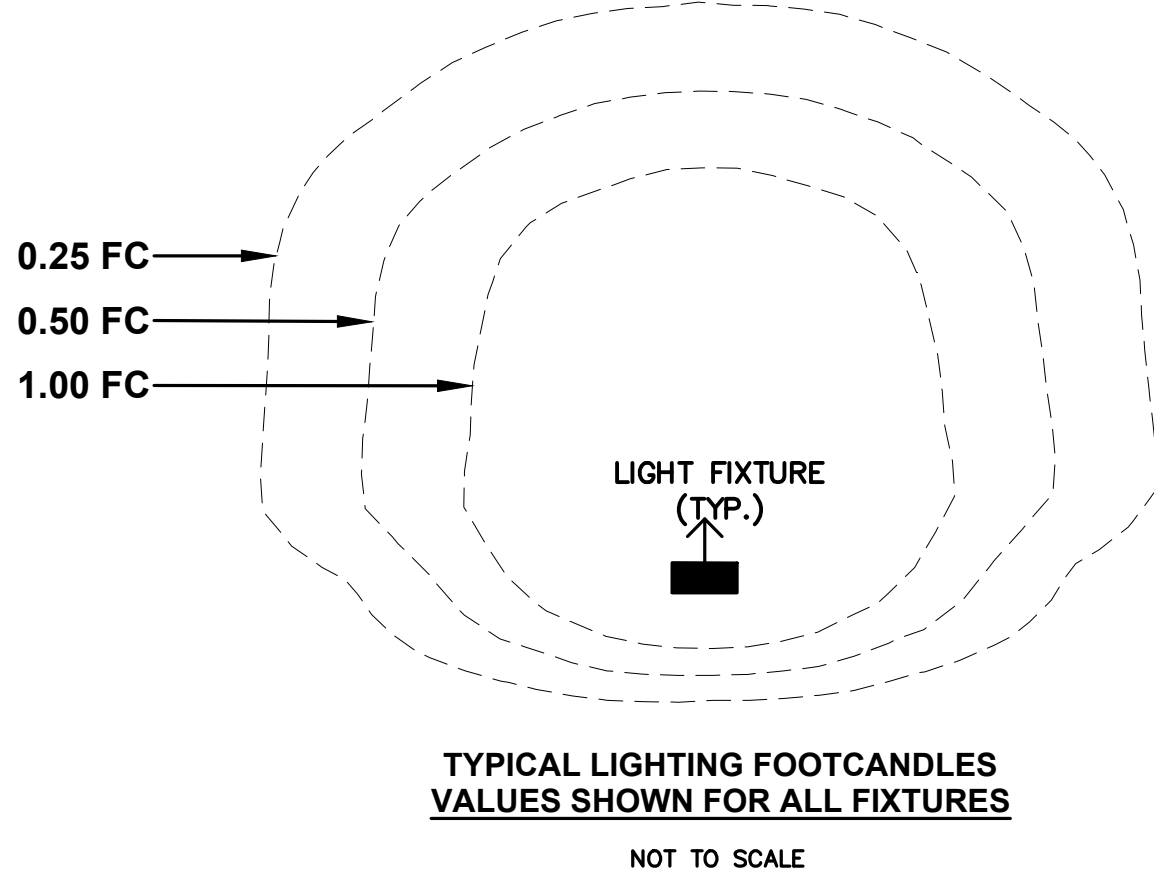


C:\18K\18900\18937 - Bulk Yard 35\18937.003 Tenon Auto CAD\DWG\18937.003 - L1.dwg U



### LIGHTING NOTES

- DO NOT INSTALL PROPOSED LIGHTS ON TOP OF ANY PROPOSED OR EXISTING UNDERGROUND UTILITIES. FIELD ADJUST LIGHTS AS NEEDED AS DIRECTED BY THE PROJECT PROFESSIONAL TO ACCOMMODATE ANY POTENTIAL CONFLICTS.
- COLOR AND FINISH OF PROPOSED LIGHTS AND POLES SHALL BE SELECTED FROM STANDARD AVAILABLE COLORS AS APPROVED BY THE OWNER.



#### NOTES:

- CONTRACTOR TO PROVIDE SHOP DRAWINGS FOR OWNER'S APPROVAL PRIOR TO ORDERING ANY MATERIAL AND FOR PROPOSED FOOTINGS/PEDESTALS.
- LIGHT FIXTURE PRODUCT INFO:

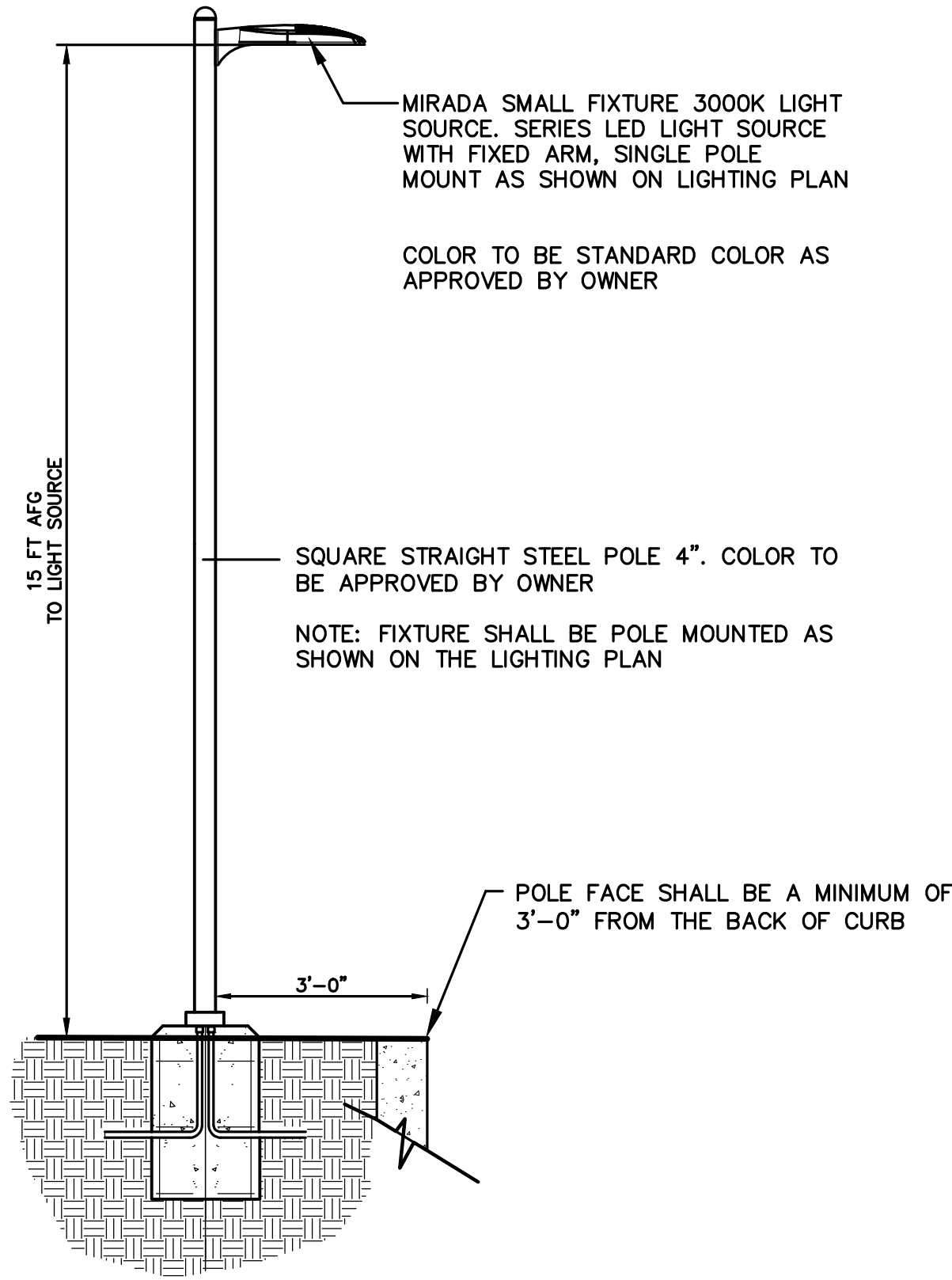
PRODUCT: MIRADA SMALL, LED LUMINAIRE MODELS AS SPECIFIED IN LUMINAIRE SCHEDULE

MANUFACTURER: LSI INDUSTRIES INC., CINCINNATI, OHIO OR APPROVED EQUAL  
WWW.LSICORP.COM  
PHONE: 513-372-3200

#### 3. POLE PRODUCT INFO:

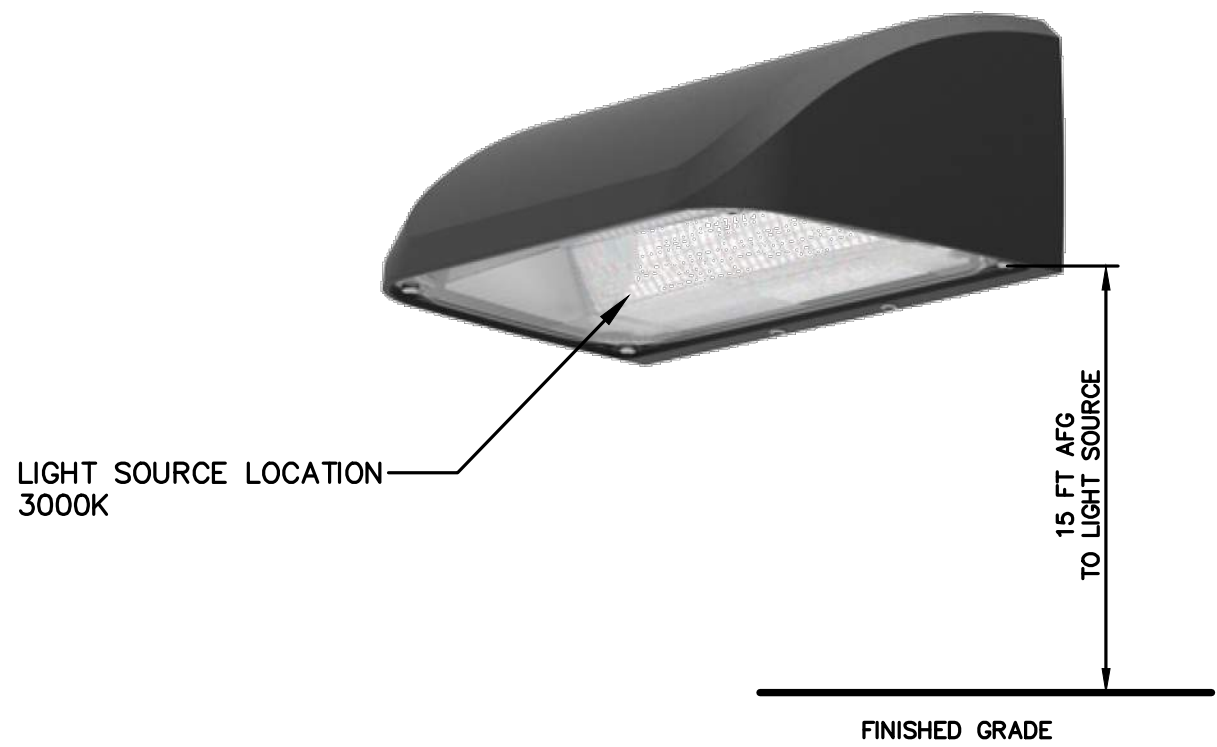
PRODUCT: SQUARE STRAIGHT STEEL POLES, 4"

MANUFACTURER: LSI INDUSTRIES INC., CINCINNATI, OHIO OR APPROVED EQUAL  
WWW.LSICORP.COM  
PHONE: 513-372-3200



### POLE MOUNTED FIXTURE DETAIL (FIXTURE B)

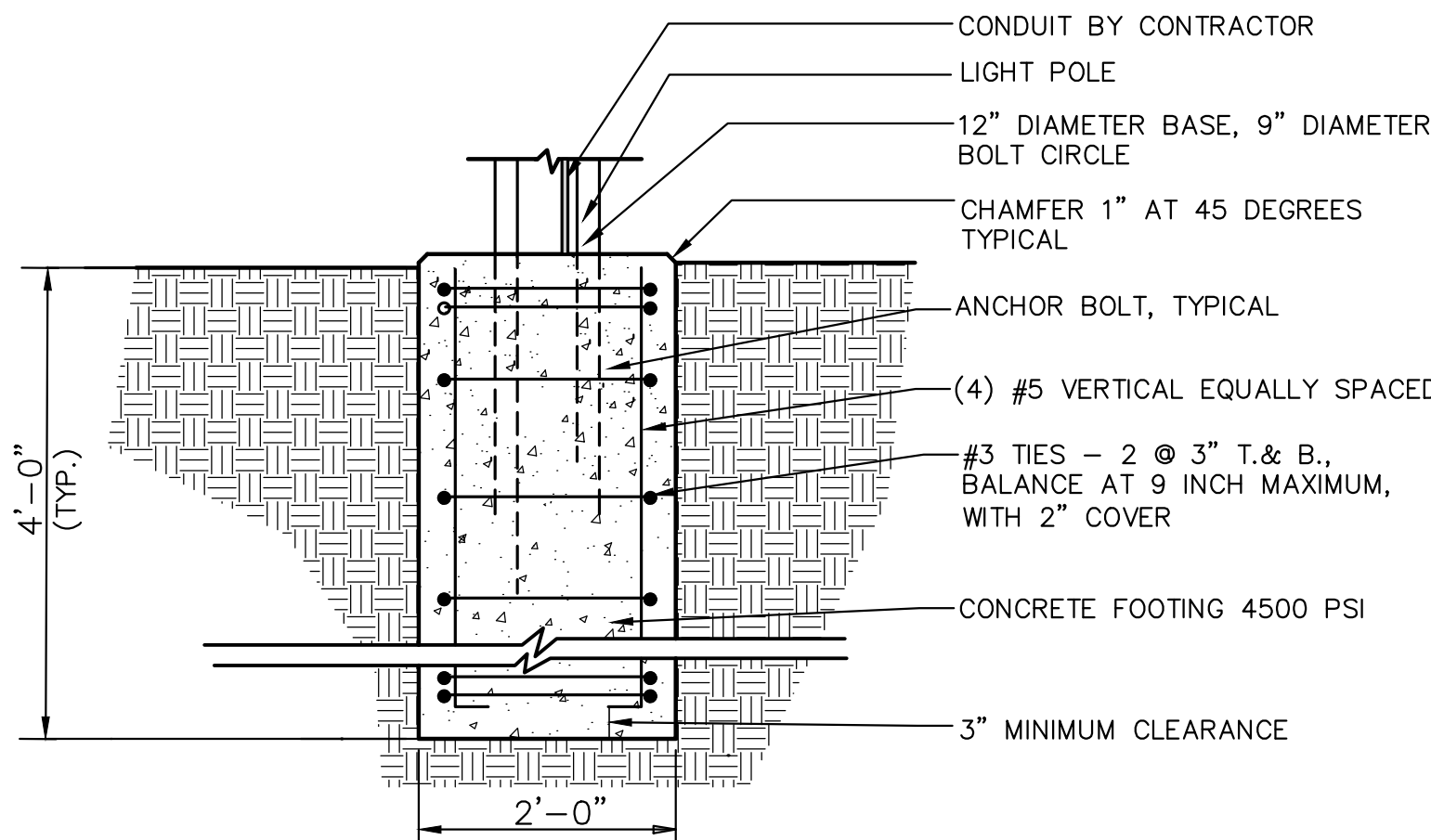
NOT TO SCALE



- LIGHT PRODUCT INFO:  
PRODUCT: MIRADA SMALL WALL SCONCE XWS OR APPROVED EQUAL COLOR TO BE BLACK OR AVAILABLE STANDARD COLOR AS APPROVED BY OWNER.
- MANUFACTURER: LSI INDUSTRIES INC. CINCINNATI, OH  
WWW.LSICORP.COM  
PHONE: 513-372-3200

### WALL MOUNTED LIGHT FIXTURE DETAIL (FIXTURE A)

NOT TO SCALE



### TYPICAL FOOTING DETAIL

NOT TO SCALE

LUMINAIRE SCHEDULE							
Symbol	Label	Manufacturer	Catalog	Lamp Output	LLF	Wattage	Mounting Height
	A	LSI INDUSTRIES, INC.	XWS-LED-03L-FTW-30-80CRI WALL MOUNTED	3624	1	26	15 AFG
	B	LSI INDUSTRIES, INC.	MRS-LED-09L-SIL-3-30-70CRI POLE MOUNTED	9244	1	63	15 AFG

1	07/22/2025	REVISED PER CLIENT COMMENTS	KAN	LBB
No.	Date	Revision	Revised By	Checked By
30 0 30 60				
SCALE : 1" = 30'				



JELENA BALORDA-BARONE, P.E.  
PROFESSIONAL ENGINEER, N.J. LIC. No. 44465

LIGHTING PLAN  
FOR  
PRELIMINARY AND FINAL MAJOR SITE PLAN  
FOR  
TENON AUTO SERVICE INC.  
BLOCK 428 LOTS 1, 2, & 2.01  
BOROUGH OF SAYREVILLE  
MIDDLESEX COUNTY, NEW JERSEY

DATE: 02/12/2025	DESIGNED BY: GM	SCALE: 1" = 30'	PROJECT NUMBER: 18937.003
DRAWN BY: GM	CHECKED BY: LB	FIELD BOOK	SHEET: 7 of 8



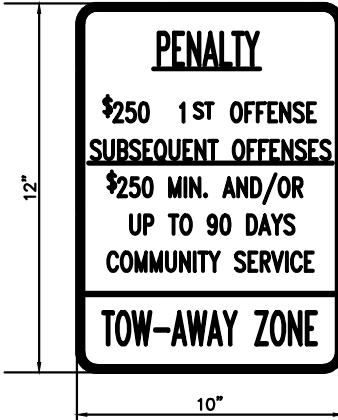
R7-B

12" x 18"

### ADA PARKING SIGN

#### DETAIL

NOT TO SCALE



NOTES :  
1. BLACK LEGEND ON WHITE REFLECTORIZED BACKGROUND  
2. ALL DIMENSIONS ARE IN INCHES.

#### PENALTY SIGN

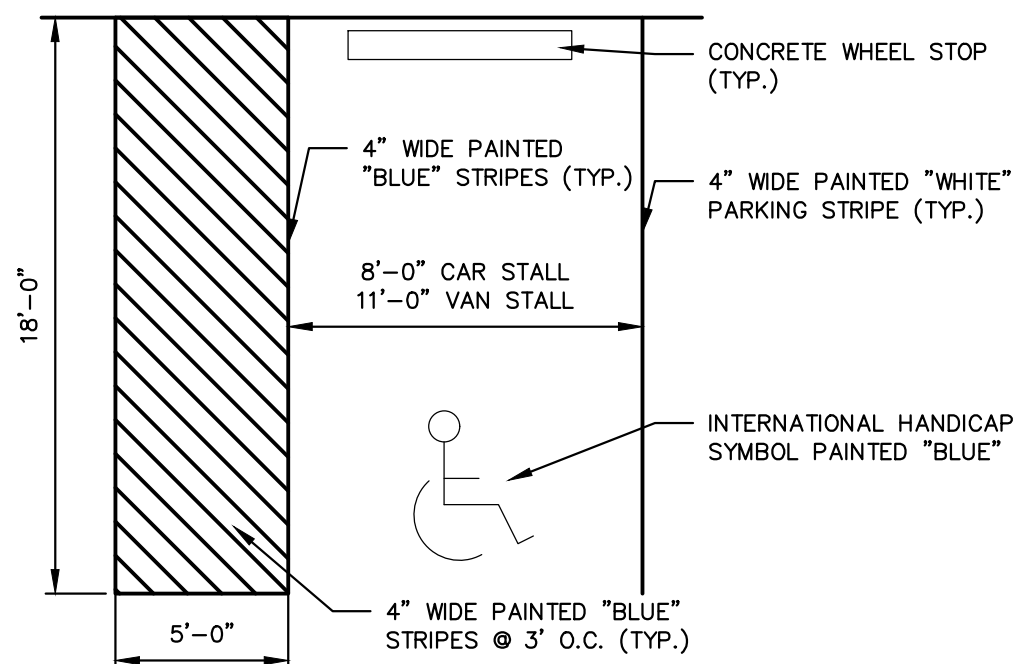
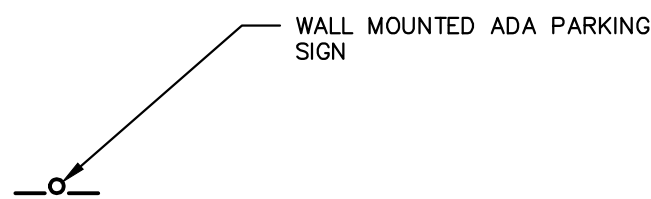
R7-BP



NOTES :  
1. BLACK LEGEND ON WHITE REFLECTORIZED BACKGROUND  
2. ALL DIMENSIONS ARE IN INCHES.

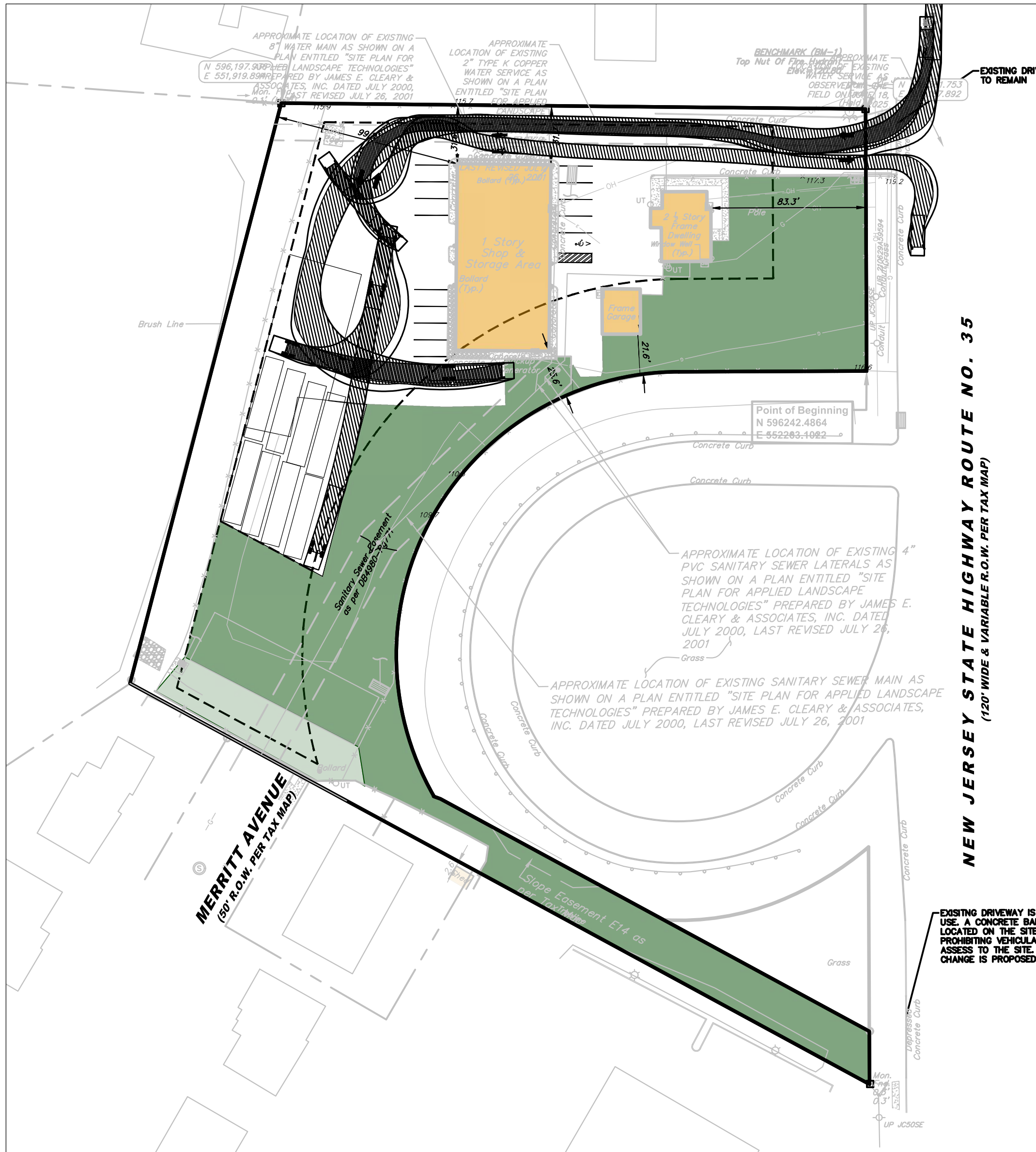
### VAN ACCESSIBLE SIGN

NOT TO SCALE



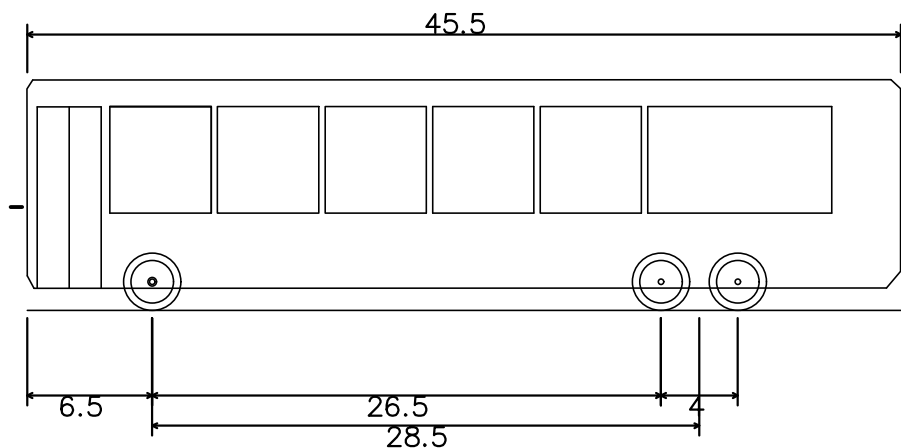
### ADA PARKING STALL

NOT TO SCALE



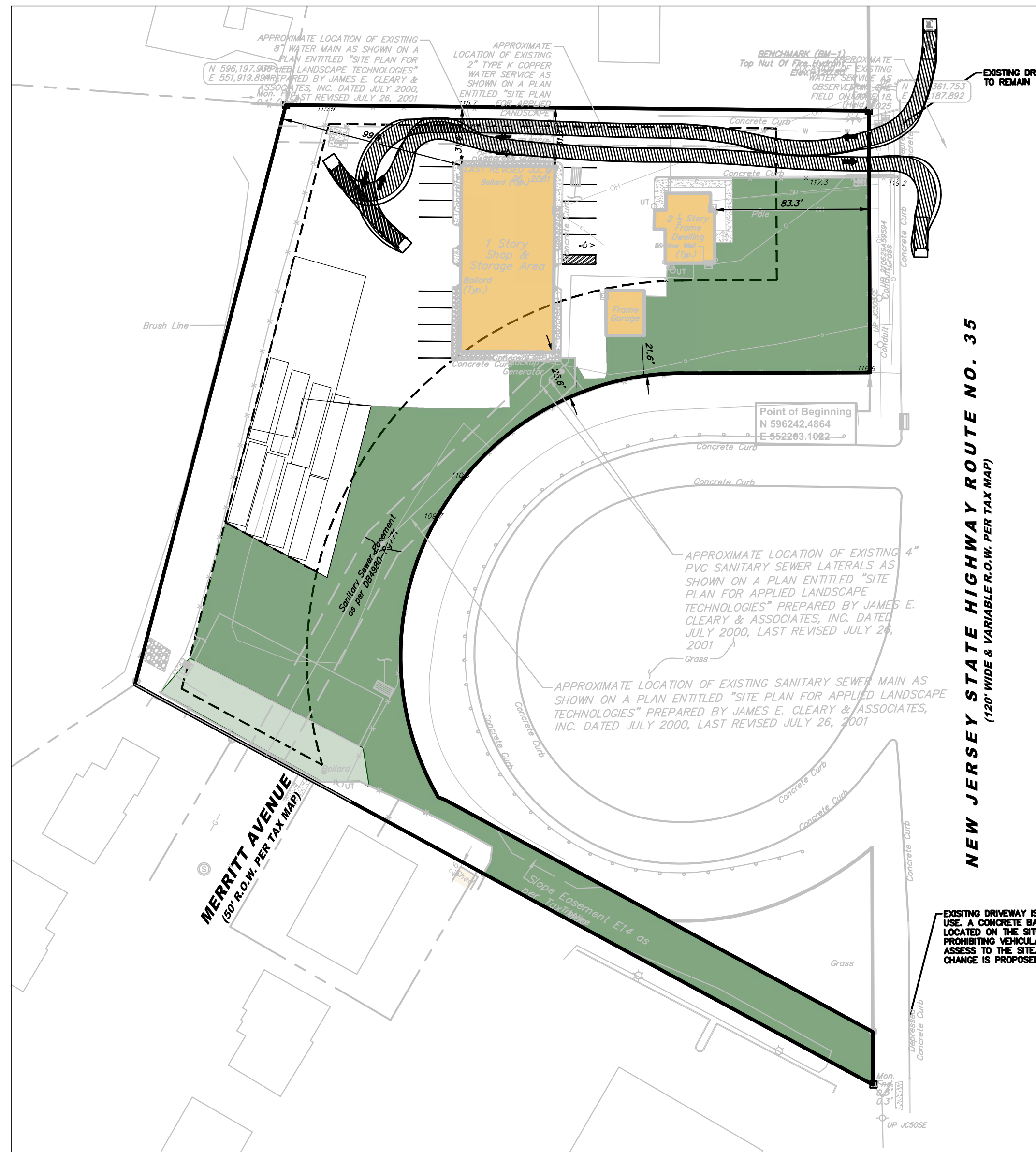
### BUS TURNING PLAN

1" = 50'



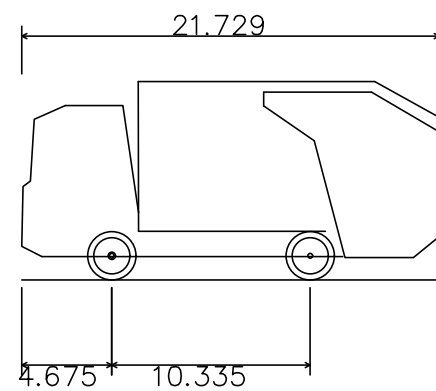
BUS-45 - Inter City Bus  
Overall Length 45.500ft  
Overall Width 8.500ft  
Overall Body Height 12.008ft  
Min Body Ground Clearance 1.158ft  
Track Width 8.500ft  
Lock-to-lock time 5.00s  
Max Steering Angle (Virtual) 45.20°

45.500ft  
8.500ft  
12.008ft  
1.158ft  
8.500ft  
5.00s  
45.20°



### REFUSE TRUCK TURNING PLAN

1" = 50'



Small Refuse Vehicle  
Overall Length 21.729ft  
Overall Width 7.218ft  
Overall Body Height 10.344ft  
Min Body Ground Clearance 1.174ft  
Track Width 7.218ft  
Lock-to-lock time 4.00s  
Curb to Curb Turning Radius 22.146ft

No.	Date	Revision	Revised By	Checked By
1	07/22/2025	REVISED PER CLIENT COMMENTS	KAN	LBB



JELENA BALORDA-BARONE, P.E.  
PROFESSIONAL ENGINEER, N.J. LIC. NO. 44465

DETAILS AND TURNING TEMPLATE PLAN  
FOR  
PRELIMINARY AND FINAL MAJOR SITE PLAN  
FOR  
TENON AUTO SERVICE INC.  
BLOCK 428 LOTS 1, 2, & 2.01  
BOROUGH OF SAYREVILLE  
MIDDLESEX COUNTY, NEW JERSEY

DATE: 02/12/2025	DESIGNED BY: KAN	SCALE: AS SHOWN	PROJECT NUMBER: 18937.003
DRAWN BY: KAN	CHECKED BY: LB	FIELD BOOK	SHEET: 8 of 8