



DISH Wireless L.L.C. SITE ID:

NJJER01580A

DISH Wireless L.L.C. SITE ADDRESS:

**2 GOWIN STREET
SAYREVILLE, NJ 08872
BLOCK 333.01 LOT 7**

NEW JERSEY CODE COMPLIANCE

ALL WORK SHALL BE PERFORMED AND MATERIALS INSTALLED IN ACCORDANCE WITH THE CURRENT EDITIONS OF THE FOLLOWING CODES AS ADOPTED BY THE LOCAL GOVERNING AUTHORITIES. NOTHING IN THESE PLANS IS TO BE CONSTRUED TO PERMIT WORK NOT CONFORMING TO THESE CODES:

CODE TYPE	CODE
BUILDING	2018 IBC W/ NJ AMENDMENTS
MECHANICAL	NJ MECHANICAL SUBCODE/2018 IMC
ELECTRICAL	NJ ELECTRICAL SUBCODE/2017 NEC

SHEET INDEX

SHEET NO.	SHEET TITLE
T-1	TITLE SHEET
EX-1	ABUTTERS EXHIBIT
SP-1	SITE DEVELOPMENT PLAN
PS-1 – PS-4	PHOTOSIMS
A-1	OVERALL AND ENLARGED SITE PLAN
A-2	ELEVATION, ANTENNA LAYOUT AND SCHEDULE
A-3	EQUIPMENT PLATFORM AND H-FRAME DETAILS
A-4	EQUIPMENT DETAILS
A-5	EQUIPMENT DETAILS
A-6	EQUIPMENT DETAILS
E-1	ELECTRICAL/FIBER ROUTE PLAN AND NOTES
E-2	ELECTRICAL DETAILS
E-3	ELECTRICAL ONE-LINE, FAULT CALCS & PANEL SCHEDULE
G-1	GROUNDING PLANS AND NOTES
G-2	GROUNDING DETAILS
G-3	GROUNDING DETAILS
RF-1	RF CABLE COLOR CODE
GN-1	LEGEND AND ABBREVIATIONS
GN-2	GENERAL NOTES
GN-3	GENERAL NOTES
GN-4	GENERAL NOTES

SIGNATURES OF APPROVAL

SCOPE OF WORK

THIS IS NOT AN ALL INCLUSIVE LIST. CONTRACTOR SHALL UTILIZE SPECIFIED EQUIPMENT PART OR ENGINEER APPROVED EQUIVALENT. CONTRACTOR SHALL VERIFY ALL NEEDED EQUIPMENT TO PROVIDE A FUNCTIONAL SITE. THE PROJECT GENERALLY CONSISTS OF THE FOLLOWING:

- TOWER SCOPE OF WORK:
- REMOVE EXISTING LEVEL AT 152'-0"
 - INSTALL (3) PROPOSED PANEL ANTENNAS (1 PER SECTOR)
 - INSTALL (3) PROPOSED ANTENNA MOUNTS (1 PER SECTOR)
 - INSTALL PROPOSED JUMPERS
 - INSTALL (6) PROPOSED RRUs (2 PER SECTOR)
 - INSTALL (1) PROPOSED OVER VOLTAGE PROTECTION DEVICE (OVP)
 - INSTALL (1) PROPOSED HYBRID CABLE

- GROUND SCOPE OF WORK:
- INSTALL (1) PROPOSED METAL PLATFORM
 - INSTALL (1) PROPOSED ICE BRIDGE
 - INSTALL (1) PROPOSED PPC CABINET
 - INSTALL (1) PROPOSED EQUIPMENT CABINET
 - INSTALL (1) PROPOSED POWER CONDUIT
 - INSTALL (1) PROPOSED TELCO CONDUIT
 - INSTALL (1) PROPOSED TELCO-FIBER BOX
 - INSTALL (1) PROPOSED GPS UNIT
 - INSTALL (1) PROPOSED SAFETY SWITCH (IF REQUIRED)
 - INSTALL (1) PROPOSED FIBER NID (IF REQUIRED)
 - INSTALL (1) PROPOSED METER SOCKET

SITE PHOTO



NEW JERSEY ONE CALL
UTILITY NOTIFICATION CENTER OF NEW JERSEY
(800) 272-1000
WWW.NJ1-CALL.ORG

CALL 3 WORKING DAYS UTILITY NOTIFICATION PRIOR TO CONSTRUCTION



GENERAL NOTES

THE FACILITY IS UNMANNED AND NOT FOR HUMAN HABITATION. A TECHNICIAN WILL VISIT THE SITE AS REQUIRED FOR ROUTINE MAINTENANCE. THE PROJECT WILL NOT RESULT IN ANY SIGNIFICANT DISTURBANCE OR EFFECT ON DRAINAGE. NO SANITARY SEWER SERVICE, POTABLE WATER, OR TRASH DISPOSAL IS REQUIRED AND NO COMMERCIAL SIGNAGE IS PROPOSED.

11"x17" PLOT WILL BE HALF SCALE UNLESS OTHERWISE NOTED

CONTRACTOR SHALL VERIFY ALL PLANS, EXISTING DIMENSIONS, AND CONDITIONS ON THE JOB SITE, AND SHALL IMMEDIATELY NOTIFY THE ENGINEER IN WRITING OF ANY DISCREPANCIES BEFORE PROCEEDING WITH THE WORK.

SITE INFORMATION

PROPERTY OWNER: HIGHPOINT ENTERPRISES – SA, LLC
ADDRESS: 800 S OSPREY AVENUE #B SARASOTA, FL 34236

TOWER TYPE: SELF-SUPPORT TOWER

TOWER CO SITE ID: 871116

TOWER APP NUMBER: 548915

COUNTY: MIDDLESEX

LATITUDE (NAD 83): 40° 28' 52.10" N
40.481139 N

LONGITUDE (NAD 83): 74° 17' 53.47" W
74.29818611 W

ZONING JURISDICTION: BOROUGH OF SAYREVILLE

ZONING DISTRICT: B-3

PARCEL NUMBER: 1219_333.01_7

OCCUPANCY GROUP: U

CONSTRUCTION TYPE: V-B

POWER COMPANY: T.B.D.

TELEPHONE COMPANY: T.B.D.

PROJECT DIRECTORY

APPLICANT: DISH Wireless L.L.C.
5701 SOUTH SANTA FE DRIVE
LITTLETON, CO 80120

TOWER OWNER: CROWN CASTLE
2000 CORPORATE DRIVE
CANONSBURG, PA 15317
(877) 486-9377

SITE DESIGNER: B+T GROUP
1717 S. BOULDER AVE, SUITE 300
TULSA, OK 74119
(918) 587-4630

SITE ACQUISITION: WILLIAM SNIDER
(973) 436-9903

CONSTRUCTION MANAGER: JOSEPH DIPIAZZA
JOSEPH.DIPIAZZA@DISH.COM

RF ENGINEER: MURUGABIRAN JAYAPAL
MURUGABIRAN.JAYAPAL@DISH.COM

DIRECTIONS

DIRECTIONS FROM DISH OFFICE 3 ADP BOULEVARD ROSELAND, NJ:

FROM ADP BLVD. TO CHOCTAW WAY TURN RIGHT ONTO LIVINGSTON AVE. TAKE I-280 E TO U.S. 9 S. EXIT ONTO RARITAN ST. TURN RIGHT ON GOWIN ST SITE NJJER01580A ON THE RIGHT.

ZONE B-3: HIGHWAY BUSINESS

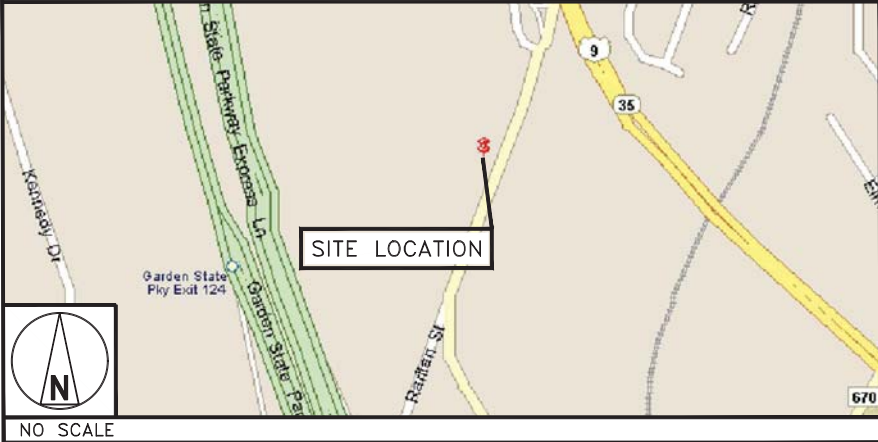
ITEM	REQUIRED	EXISTING	PROPOSED
MIN. AREA SQ. FT	20,000	66,298	NO CHANGE
MIN. LOT WIDTH	100'	288.00'	NO CHANGE
MIN. LOT DEPTH	100'	190.42'	NO CHANGE
MIN. FRONT YARD SETBACK	50'	19.72'	NO CHANGE
MIN. SIDE YARD SETBACK ONE	10'	137.86'	NO CHANGE
MIN. SIDE YARD SETBACK BOTH	20'	20'	NO CHANGE
MIN. REAR YARD SETBACK	25'	25.91'	NO CHANGE
MAX. BUILDING HEIGHT	35'	15'	NO CHANGE
MAX. LOT COVERAGE (BUILDING)	25%	11.53%	NO CHANGE
MAX. LOT COVERAGE (BUILDING & PAVEMENT)	85%	84.75%	NO CHANGE

ADDITIONAL TELECOMMUNICATIONS REQUIREMENTS (ORDINANCE 26-87)

ITEM	REQUIRED	EXISTING	PROPOSED
MAX. TOWER HEIGHT	150'	(E) 169'-5"	NO CHANGE
FRONT YARD SETBACK (75% TWR. HT.)	127.13'	(E) 113.83'	NO CHANGE
SIDE YARD SETBACK – EAST (75% TWR. HT.)	127.13'	(E) 25.12'	NO CHANGE
SIDE YARD SETBACK – WEST (75% TWR. HT.)	127.13'	294.59'	NO CHANGE
REAR YARD SETBACK (75% TWR. HT.)	127.13'	(E) 51.49'	NO CHANGE

(E) – EXISTING NON-CONFORMING CONDITIONS. VARIANCE REQUESTED.

VICINITY MAP



5701 SOUTH SANTA FE DRIVE
LITTLETON, CO 80120



MTS TELECOM, L.L.C.
COA# 24CA28343300
EXPIRES 8/31/22

IT IS A VIOLATION OF LAW FOR ANY PERSON, UNLESS THEY ARE ACTING UNDER THE DIRECTION OF A LICENSED PROFESSIONAL ENGINEER, TO ALTER THIS DOCUMENT.

DRAWN BY: CHECKED BY: APPROVED BY:

JJR/ANP JJR/LR PDS

RFDS REV #: 3

CONSTRUCTION DOCUMENTS

SUBMITTALS		
REV	DATE	DESCRIPTION
A	6/15/21	ISSUED FOR REVIEW
0	10/12/21	ISSUED FOR CONSTRUCTION
1	12/20/21	ISSUED FOR CONSTRUCTION
2	5/16/22	ISSUED FOR CONSTRUCTION
3	5/26/22	ISSUED FOR CONSTRUCTION

A&E PROJECT NUMBER

109333.005.01

DISH Wireless L.L.C.
PROJECT INFORMATION

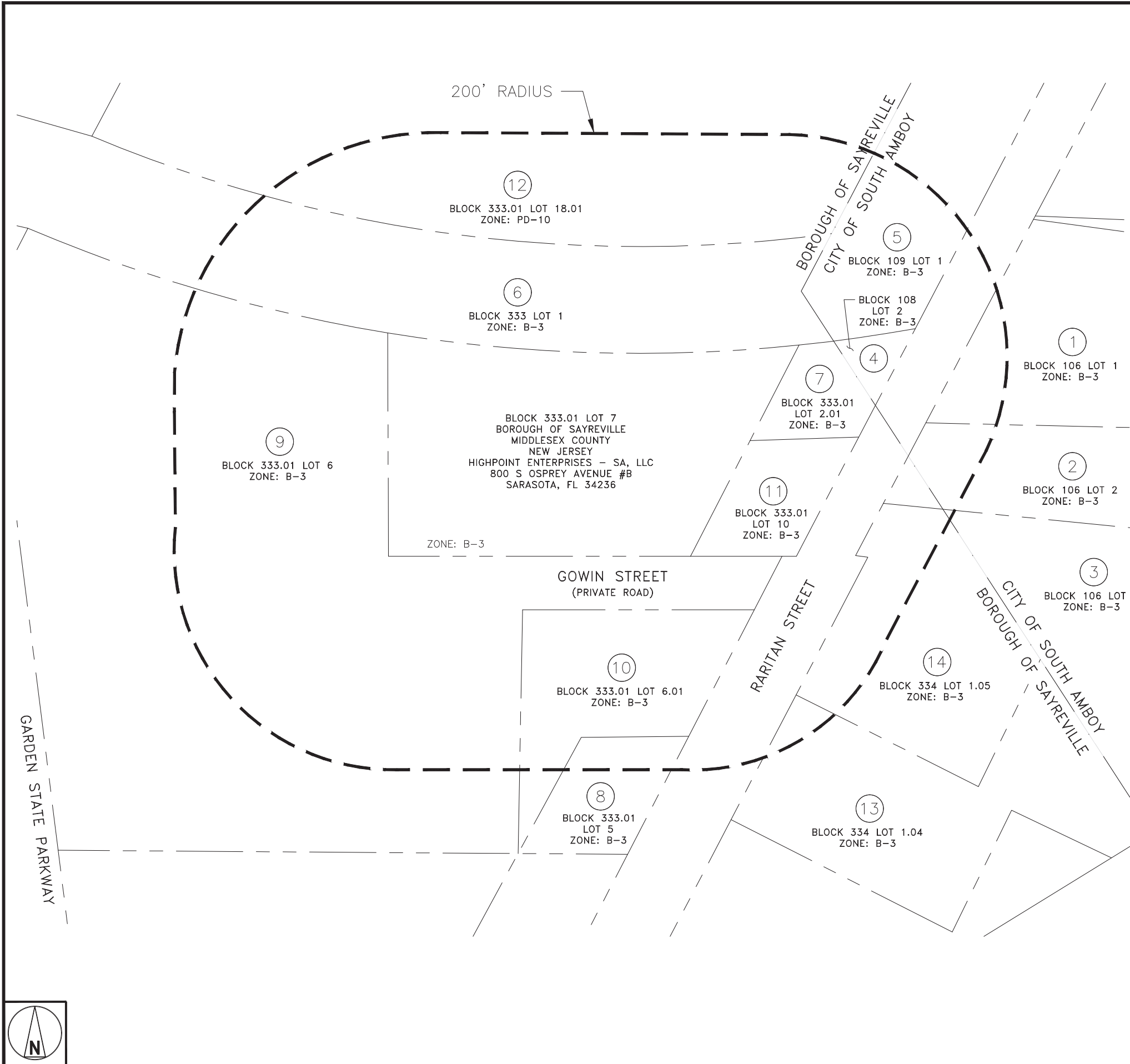
NJJER01580A
2 GOWIN STREET
SAYREVILLE, NJ 08872
BLOCK 333.01 LOT 7

SHEET TITLE

TITLE SHEET

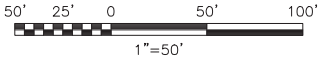
SHEET NUMBER

T-1



ABUTTERS LEGEND					
MARK	PROPERTY OWNER/ADDRESS	BLOCK	LOT	JURISDICTION	ZONING
①	MIDDLESEX WATER COMPANY 485C RT 1 SOUTH STE 400 ISELIN, NJ 08830	106	1	CITY OF SOUTH AMBOY	B-2
②	MIDDLESEX WATER COMPANY 485C RT 1 SOUTH STE 400 ISELIN, NJ 08830	106	2	CITY OF SOUTH AMBOY	B-2
③	ENRAMA INC. 4261 HWY #35 SOUTH AMBOY, NJ 08879	106	3	CITY OF SOUTH AMBOY	B-2
④	WAGCAR INC. 502 RARITAN STREET SAYREVILLE, NJ 08872	108	2	CITY OF SOUTH AMBOY	B-3
⑤	RARITAN RIVER R.R. % G. OLIVER 110 FRANKLIN RD SE ROANOKE, VA 24042	109	1	CITY OF SOUTH AMBOY	B-3
⑥	NL INDUSTRIES C/O MARC REINOEHL 5430 LBJ FREEWAY, #1700 DALLAS, TX 75240-2620	333	1	BOROUGH OF SAYREVILLE	B-3
⑦	WAGCAR INC. 502 RARITAN STREET SAYREVILLE, NJ 08872	333.01	2.01	BOROUGH OF SAYREVILLE	B-3
⑧	PRAKASH PATEL & DEVIKA PATEL 68 DEERFIELD ROAD SAYREVILLE, NJ 08872	333.01	5	BOROUGH OF SAYREVILLE	B-3
⑨	100 GOWIN STREET, LLC 999 RIVERSIDE DRIVE KEASBEY, NJ 08832	333.01	6	BOROUGH OF SAYREVILLE	B-3
⑩	THREE LEFTIES, LLC 329 CEDAR STREET SOUTH AMBOY, NJ 08879	333.01	6.01	BOROUGH OF SAYREVILLE	B-3
⑪	WAYNE WAGNER 7 HALE ROAD EAST BRUNSWICK, NJ 08816	333.01	10	BOROUGH OF SAYREVILLE	B-3
⑫	MIDDLESEX WATER COMPANY 1500 RONSON ROAD ISELIN, NJ 08830	333.01	18.01	BOROUGH OF SAYREVILLE	PD-10
⑬	CARREIRA REALTY, LLC 495 RARITAN STREET SAYREVILLE, NJ 08872	334	1.04	BOROUGH OF SAYREVILLE	B-3
⑭	RARITAN BAY FEDERAL CREDIT UNION 491 RARITAN STREET SAYREVILLE, NJ 08872	334	1.05	BOROUGH OF SAYREVILLE	B-3

NOTE:
THE ABUTTERS EXHIBIT SHOWN
HEREON IS BASED ON A 200' RADIUS
MAP BY CENTER STATE ENGINEERING
DATED, 11/05/21, AS PROVIDED BY
THE CITY OF SOUTH AMBOY, AND
BASED ON PUBLIC RECORD
INFORMATION PROVIDED BY GOOGLE
EARTH PARLAY.



ABUTTERS EXHIBIT



5701 SOUTH SANTA FE DRIVE
LITTLETON, CO 80120



MTS TELECOM, L.L.C.
1717 S BOULDER
SUITE 300
TULSA, OK 74119
PH: (918) 587-4630
btwo@btgrp.com



MTS TELECOM, L.L.C.
COA# 24GA28343300
EXPIRES 8/31/22

IT IS A VIOLATION OF LAW FOR ANY PERSON,
UNLESS THEY ARE ACTING UNDER THE DIRECTION
OF A LICENSED PROFESSIONAL ENGINEER,
TO ALTER THIS DOCUMENT.

DRAWN BY: CHECKED BY: APPROVED BY:

JJR/ANP JJR/LR PDS

RFDS REV #: 3

CONSTRUCTION
DOCUMENTS

SUBMITTALS		
REV	DATE	DESCRIPTION
A	6/15/21	ISSUED FOR REVIEW
0	10/12/21	ISSUED FOR CONSTRUCTION
1	12/20/21	ISSUED FOR CONSTRUCTION
2	5/16/22	ISSUED FOR CONSTRUCTION
3	5/26/22	ISSUED FOR CONSTRUCTION

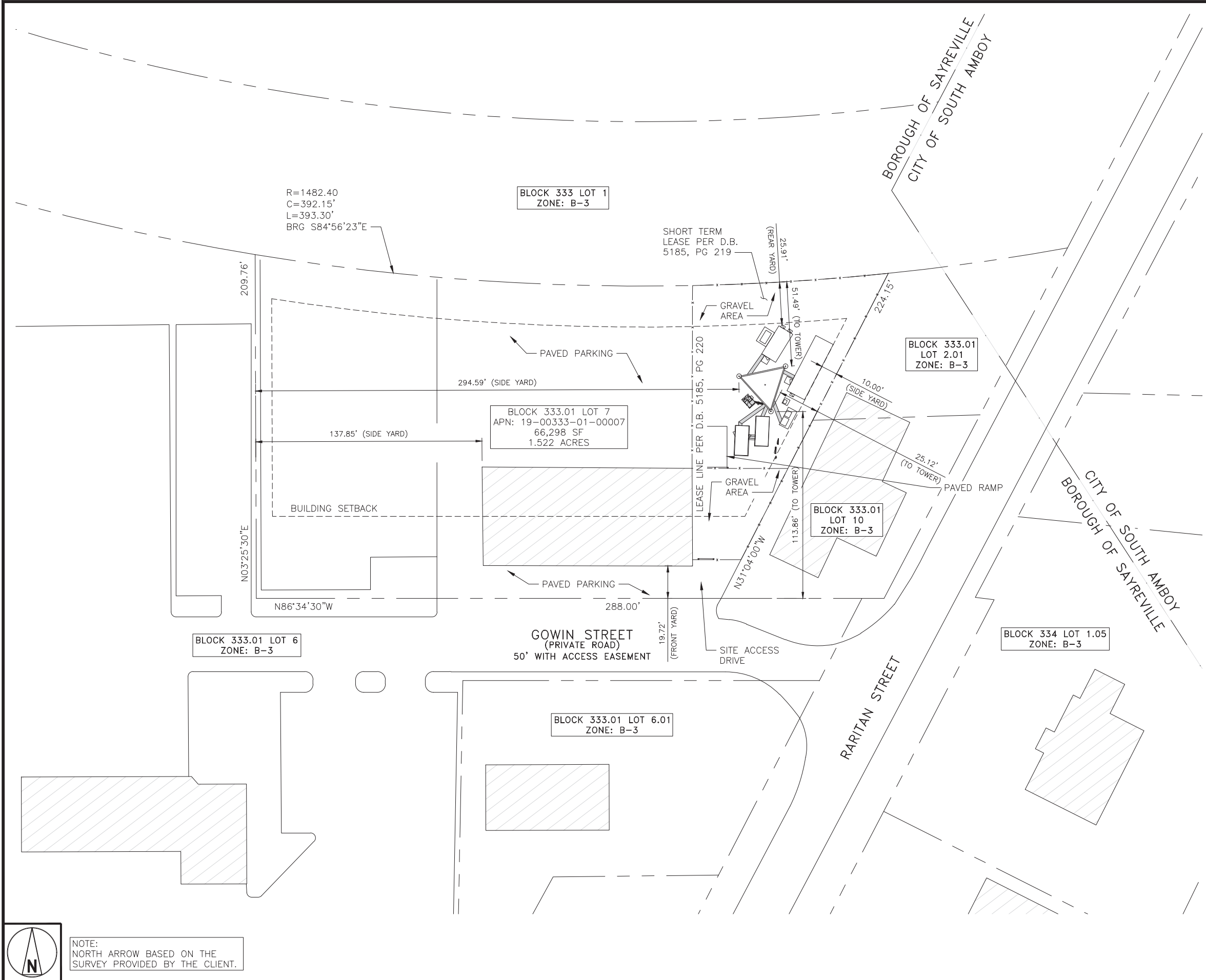
A&E PROJECT NUMBER
109333.005.01

DISH Wireless L.L.C.
PROJECT INFORMATION
NJJER01580A
2 GOWIN STREET
SAYREVILLE, NJ 08872
BLOCK 333.01 LOT 7

SHEET TITLE
ABUTTERS
EXHIBIT

SHEET NUMBER

EX-1



NOTE:
NORTH ARROW BASED ON THE
SURVEY PROVIDED BY THE CLIENT.

LEGAL DESCRIPTION:
BEGINNING AT A POINT IN THE SOUTH
EAST OF LOT 7, BLOCK 33.1. THENCE
288.00' NORTH 86 ° 34' 30" WEST,
THENCE 209.76' NORTH 3 ° 25' 30"
EAST, THENCE 393.30' AT R -
1482.40' SOUTH 84 ° 56' 23" EAST,
THENCE 224.15' SOUTH 31 ° 4' 0"
WEST RETURNING TO POINT OF
BEGINNING, CONTAINING 1.56 ACRES
AND SUBJECT TO ALL EXISTING
EASEMENTS AND RIGHT OF WAYS.

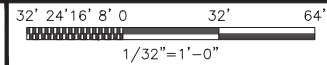
NOTE:
INFO SHOWN HEREON IS FROM A
BOUNDARY SURVEY BY E2 PROJECT
MANAGEMENT LLC, PROJECT
#P-16-01-196.C, PROVIDED BY THE
CLIENT.

OWNER OF RECORD:
HIGHPOINT ENTERPRISES - SA, LLC
800 S OSPREY AVENUE B
SARASOTA, FL 34236

APPLICANT:
CROWN CASTLE
1200 MACARTHUR BOULEVARD
SUITE 200
MAHWAH, NJ 07430

NOTE:
THE ABUTTERS EXHIBIT SHOWN
HEREON IS BASED ON A 200' RADIUS
MAP BY CENTER STATE ENGINEERING
DATED, 11/05/21, AS PROVIDED BY
THE CITY OF SOUTH AMBOY, AND
BASED ON PUBLIC RECORD
INFORMATION PROVIDED BY GOOGLE
EARTH PARLAY.

SITE DEVELOPMENT PLAN



5701 SOUTH SANTA FE DRIVE
LITTLETON, CO 80120



MTS TELECOM, L.L.C.
COA# 24GA28343300
EXPIRES 8/31/22

IT IS A VIOLATION OF LAW FOR ANY PERSON,
UNLESS THEY ARE ACTING UNDER THE DIRECTION
OF A LICENSED PROFESSIONAL ENGINEER,
TO ALTER THIS DOCUMENT.

DRAWN BY:	CHECKED BY:	APPROVED BY:
JJR/ANP	JJR/LR	PDS
RFDS REV #:		3

CONSTRUCTION
DOCUMENTS

SUBMITTALS		
REV	DATE	DESCRIPTION
A	6/15/21	ISSUED FOR REVIEW
0	10/12/21	ISSUED FOR CONSTRUCTION
1	12/20/21	ISSUED FOR CONSTRUCTION
2	5/16/22	ISSUED FOR CONSTRUCTION
3	5/26/22	ISSUED FOR CONSTRUCTION

A&E PROJECT NUMBER
109333.005.01

DISH Wireless L.L.C.
PROJECT INFORMATION
NJJER01580A
2 GOWIN STREET
SAYREVILLE, NJ 08872
BLOCK 333.01 LOT 7

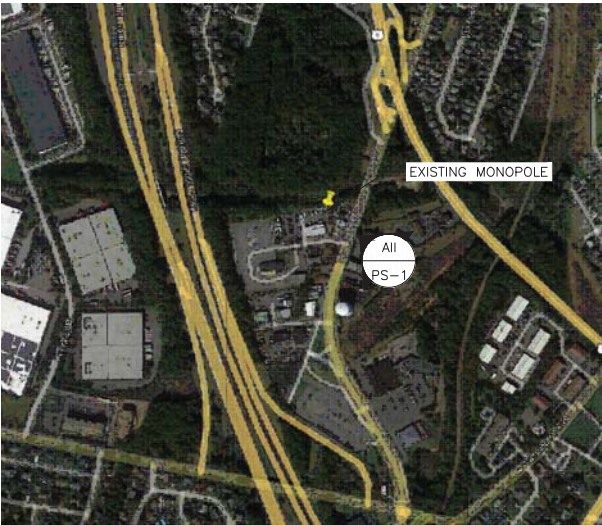
SHEET TITLE
SITE DEVELOPMENT
PLAN

SHEET NUMBER

SP-1



EXISTING VIEW 1



PROPOSED VIEW 1

dish
wireless.

5701 SOUTH SANTA FE DRIVE
LITTLETON, CO 80120



MTS TELECOM, L.L.C.
1717 S. BOULDER
SUITE 300
TULSA, OK 74119
PH: (918) 587-4630
btwo@bgrp.com



MTS TELECOM, L.L.C.
COA# 24CA28343300
EXPIRES 8/31/22

IT IS A VIOLATION OF LAW FOR ANY PERSON,
UNLESS THEY ARE ACTING UNDER THE DIRECTION
OF A LICENSED PROFESSIONAL ENGINEER,
TO ALTER THIS DOCUMENT.

DRAWN BY: CHECKED BY: APPROVED BY:

JJR/ANP JJR/LR PDS

RFDS REV #: 3

CONSTRUCTION
DOCUMENTS

SUBMITTALS		
REV	DATE	DESCRIPTION
A	6/15/21	ISSUED FOR REVIEW
0	10/12/21	ISSUED FOR CONSTRUCTION
1	12/20/21	ISSUED FOR CONSTRUCTION
2	5/16/22	ISSUED FOR CONSTRUCTION
3	5/26/22	ISSUED FOR CONSTRUCTION

A&E PROJECT NUMBER
109333.005.01

DISH Wireless L.L.C.
PROJECT INFORMATION
NJJER01580A
2 GOWIN STREET
SAYREVILLE, NJ 08872
BLOCK 333.01 LOT 7

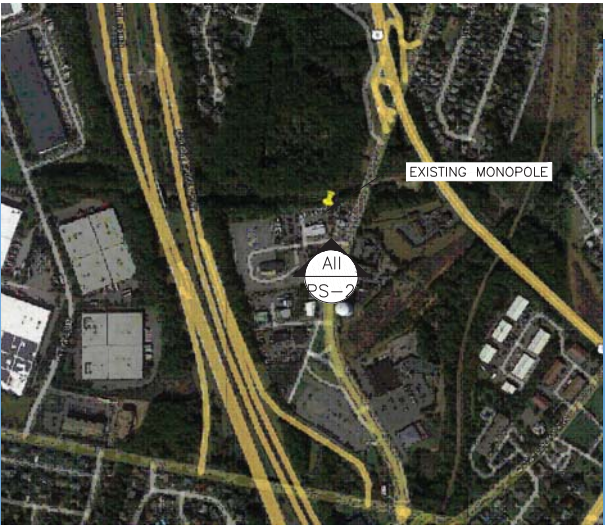
SHEET TITLE
PHOTOSIMS
VIEW 1

SHEET NUMBER

PS-1



EXISTING VIEW 1



PROPOSED VIEW 1



5701 SOUTH SANTA FE DRIVE
LITTLETON, CO 80120



MTS TELECOM, L.L.C.
1717 S. BOULDER,
SUITE 300
TULSA, OK 74119
PH: (918) 587-4630
btwo@bgrp.com



MTS TELECOM, L.L.C.
COA# 24GA28343300
EXPIRES 8/31/22

IT IS A VIOLATION OF LAW FOR ANY PERSON,
UNLESS THEY ARE ACTING UNDER THE DIRECTION
OF A LICENSED PROFESSIONAL ENGINEER,
TO ALTER THIS DOCUMENT.

DRAWN BY: CHECKED BY: APPROVED BY:

JJR/ANP JJR/LR PDS

RFDS REV #: 3

CONSTRUCTION
DOCUMENTS

SUBMITTALS		
REV	DATE	DESCRIPTION
A	6/15/21	ISSUED FOR REVIEW
0	10/12/21	ISSUED FOR CONSTRUCTION
1	12/20/21	ISSUED FOR CONSTRUCTION
2	5/16/22	ISSUED FOR CONSTRUCTION
3	5/26/22	ISSUED FOR CONSTRUCTION

A&E PROJECT NUMBER
109333.005.01

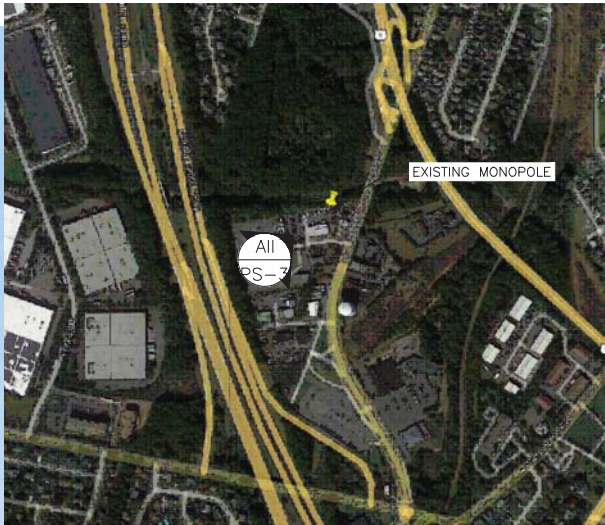
DISH Wireless L.L.C.
PROJECT INFORMATION
NJJER01580A
2 GOWIN STREET
SAYREVILLE, NJ 08872
BLOCK 333.01 LOT 7

SHEET TITLE
PHOTOSIMS
VIEW 2

SHEET NUMBER
PS-2



EXISTING VIEW 1



PROPOSED VIEW 1

dish
wireless.

5701 SOUTH SANTA FE DRIVE
LITTLETON, CO 80120

B+T GRP
MTS TELECOM, L.L.C.
1717 S. BOULDER,
SUITE 300
TULSA, OK 74119
PH: (918) 587-4630
btwo@bgrp.com



MTS TELECOM, L.L.C.
COA# 24CA28343300
EXPIRES 8/31/22

IT IS A VIOLATION OF LAW FOR ANY PERSON,
UNLESS THEY ARE ACTING UNDER THE DIRECTION
OF A LICENSED PROFESSIONAL ENGINEER,
TO ALTER THIS DOCUMENT.

DRAWN BY: CHECKED BY: APPROVED BY:

JJR/ANP JJR/LR PDS

RFDS REV #: 3

CONSTRUCTION
DOCUMENTS

SUBMITTALS		
REV	DATE	DESCRIPTION
A	6/15/21	ISSUED FOR REVIEW
0	10/12/21	ISSUED FOR CONSTRUCTION
1	12/20/21	ISSUED FOR CONSTRUCTION
2	5/16/22	ISSUED FOR CONSTRUCTION
3	5/26/22	ISSUED FOR CONSTRUCTION

A&E PROJECT NUMBER
109333.005.01

DISH Wireless L.L.C.
PROJECT INFORMATION
NJJER01580A
2 GOWIN STREET
SAYREVILLE, NJ 08872
BLOCK 333.01 LOT 7

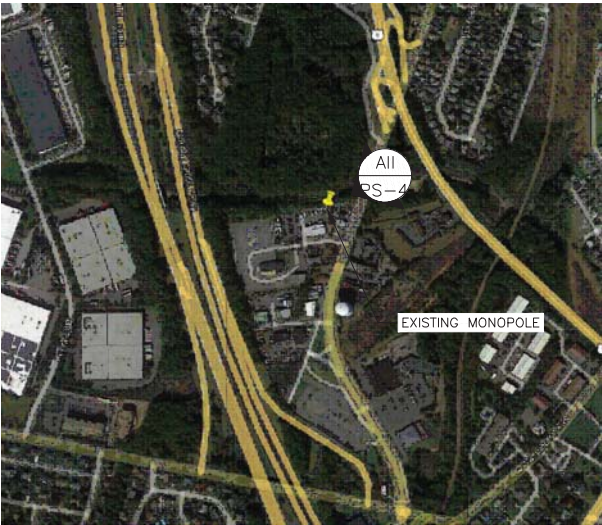
SHEET TITLE
PHOTOSIMS
VIEW 3

SHEET NUMBER

PS-3



EXISTING VIEW 1



PROPOSED VIEW 1

PROPOSED EQUIPMENT
3 ANTENNAS
6 TMS

dish
wireless.

5701 SOUTH SANTA FE DRIVE
LITTLETON, CO 80120



MTS TELECOM, L.L.C.
1717 S. BOULDER,
TULSA, OK 74119
PH: (918) 587-4630
btwo@bgrp.com



MTS TELECOM, L.L.C.
COA# 24GA28343300
EXPIRES 8/31/22

IT IS A VIOLATION OF LAW FOR ANY PERSON,
UNLESS THEY ARE ACTING UNDER THE DIRECTION
OF A LICENSED PROFESSIONAL ENGINEER,
TO ALTER THIS DOCUMENT.

DRAWN BY: CHECKED BY: APPROVED BY:

JJR/ANP JJR/LR PDS

RFDS REV #: 3

CONSTRUCTION
DOCUMENTS

SUBMITTALS		
REV	DATE	DESCRIPTION
A	6/15/21	ISSUED FOR REVIEW
0	10/12/21	ISSUED FOR CONSTRUCTION
1	12/20/21	ISSUED FOR CONSTRUCTION
2	5/16/22	ISSUED FOR CONSTRUCTION
3	5/26/22	ISSUED FOR CONSTRUCTION

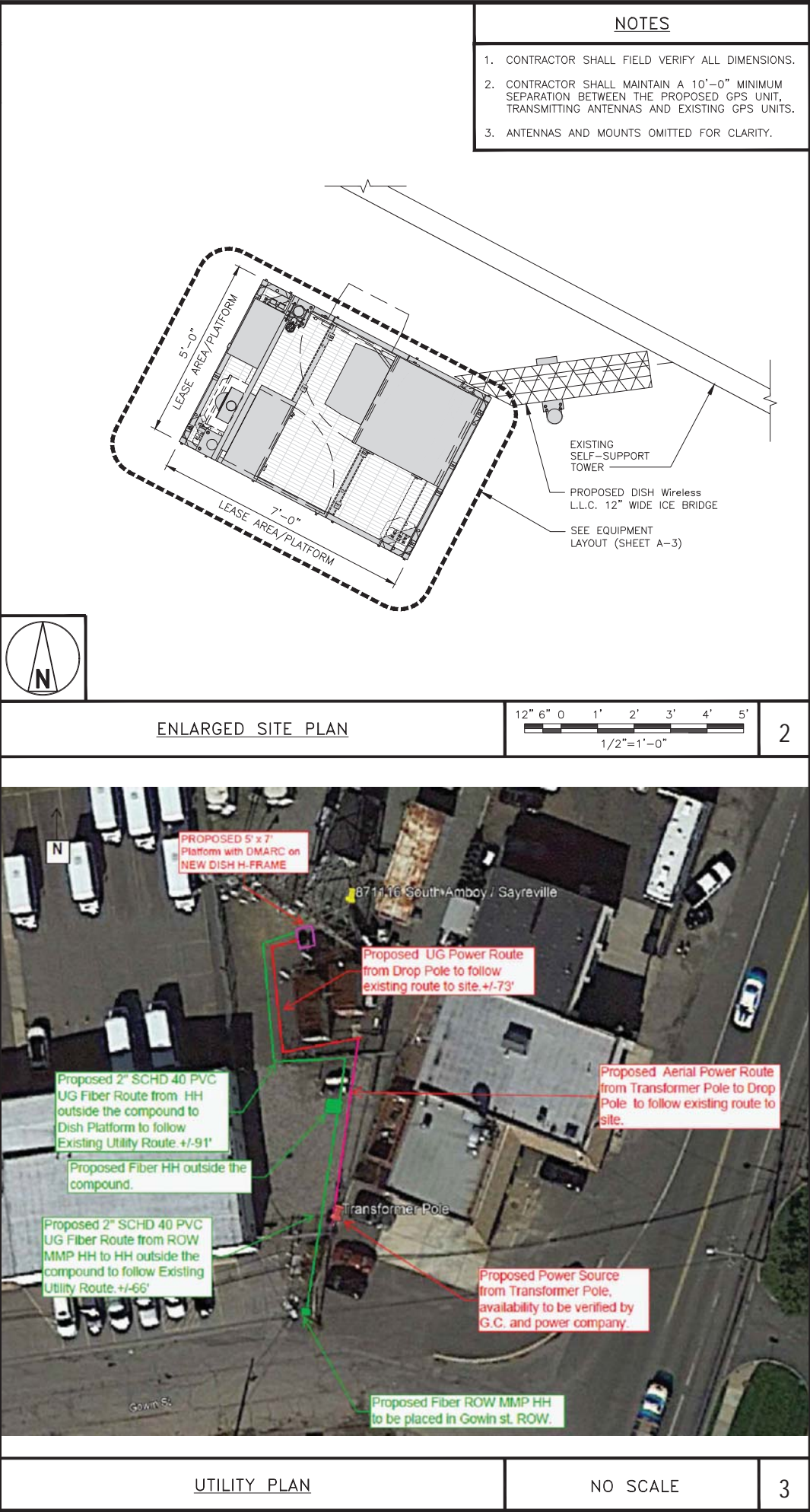
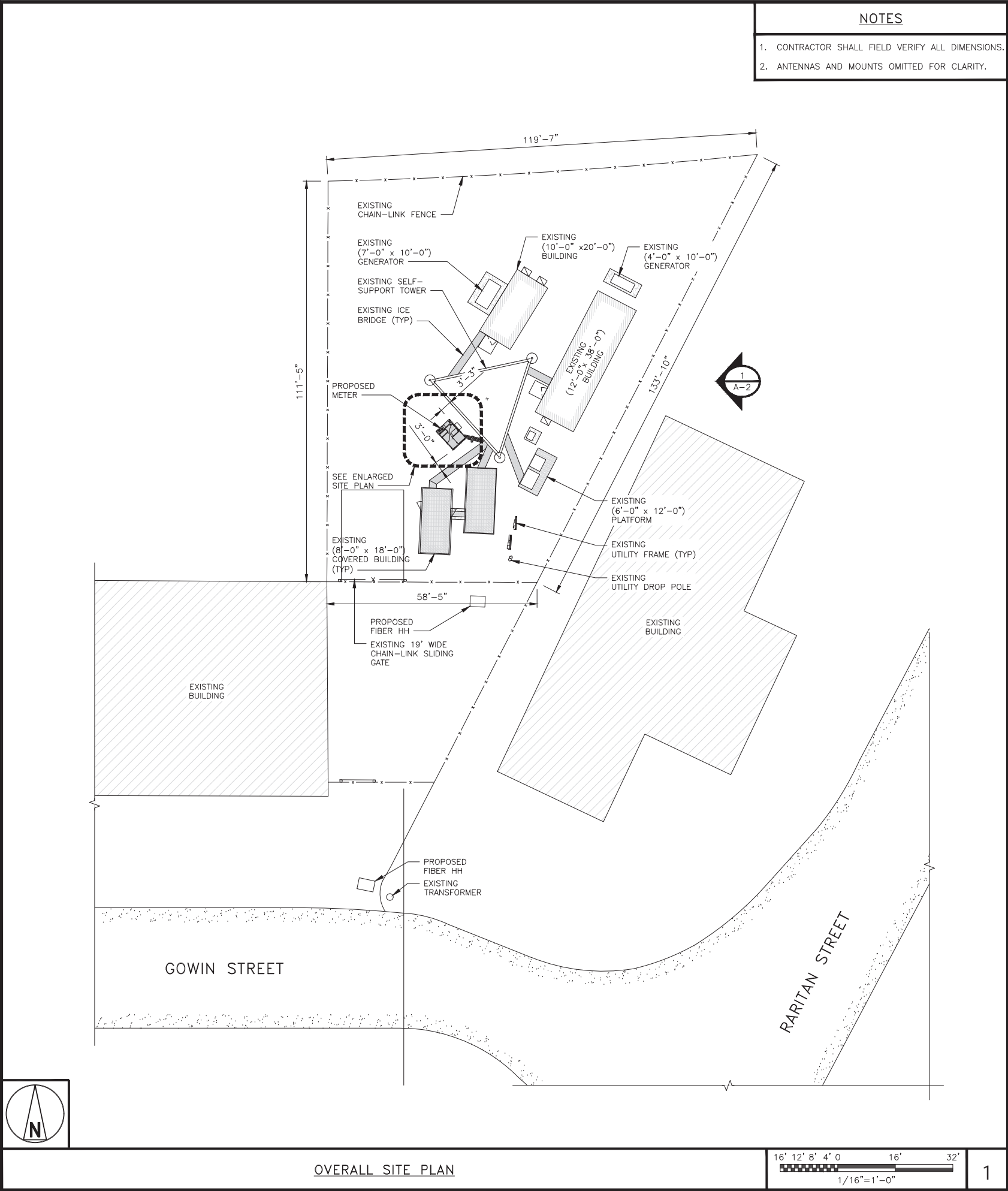
A&E PROJECT NUMBER
109333.005.01

DISH Wireless L.L.C.
PROJECT INFORMATION
NJJER01580A
2 GOWIN STREET
SAYREVILLE, NJ 08872
BLOCK 333.01 LOT 7

SHEET TITLE
PHOTOSIMS
VIEW 4

SHEET NUMBER

PS-4



dish
wireless.

5701 SOUTH SANTA FE DRIVE
LITTLETON, CO 80120

B+T GRP
MTS TELECOM, L.L.C.
1717 S. BOULDER,
SUITE 300
TULSA, OK 74119
PH: (918) 587-4630
btwo@bgrp.com



MTS TELECOM, L.L.C.
COA# 24GA28343300
EXPIRES 8/31/22

IT IS A VIOLATION OF LAW FOR ANY PERSON, UNLESS THEY ARE ACTING UNDER THE DIRECTION OF A LICENSED PROFESSIONAL ENGINEER, TO ALTER THIS DOCUMENT.

DRAWN BY: CHECKED BY: APPROVED BY:

JJR/ANP JJR/LR PDS

RFDS REV #: 3

CONSTRUCTION DOCUMENTS

SUBMITTALS		
REV	DATE	DESCRIPTION
A	6/15/21	ISSUED FOR REVIEW
0	10/12/21	ISSUED FOR CONSTRUCTION
1	12/20/21	ISSUED FOR CONSTRUCTION
2	5/16/22	ISSUED FOR CONSTRUCTION
3	5/26/22	ISSUED FOR CONSTRUCTION

A&E PROJECT NUMBER
109333.005.01

DISH Wireless L.L.C.
PROJECT INFORMATION
NJJER01580A
2 GOWIN STREET
SAYREVILLE, NJ 08872
BLOCK 333.01 LOT 7

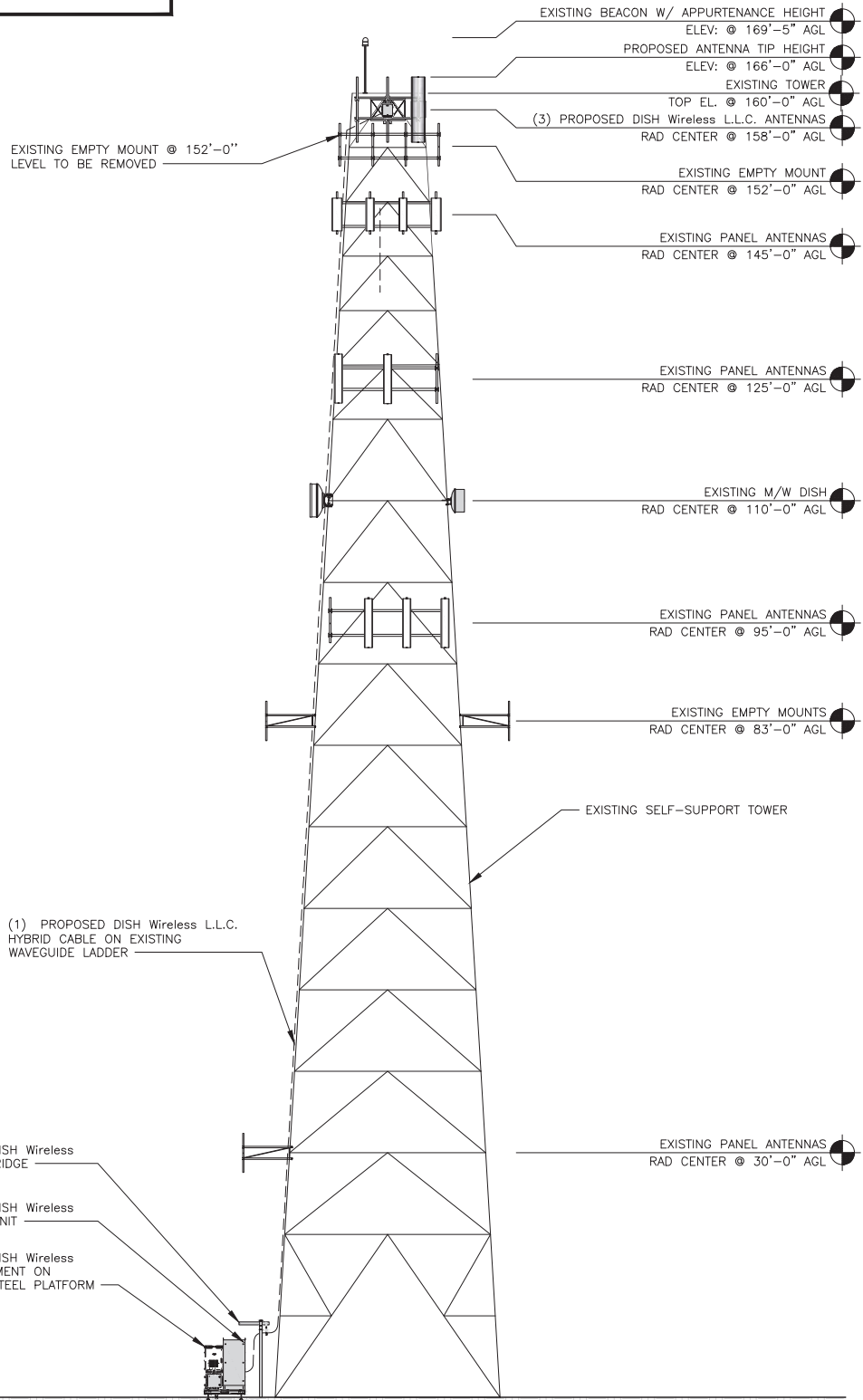
SHEET TITLE
OVERALL AND ENLARGED
SITE PLAN

SHEET NUMBER

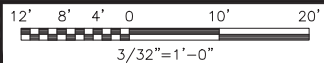
A-1

NOTES

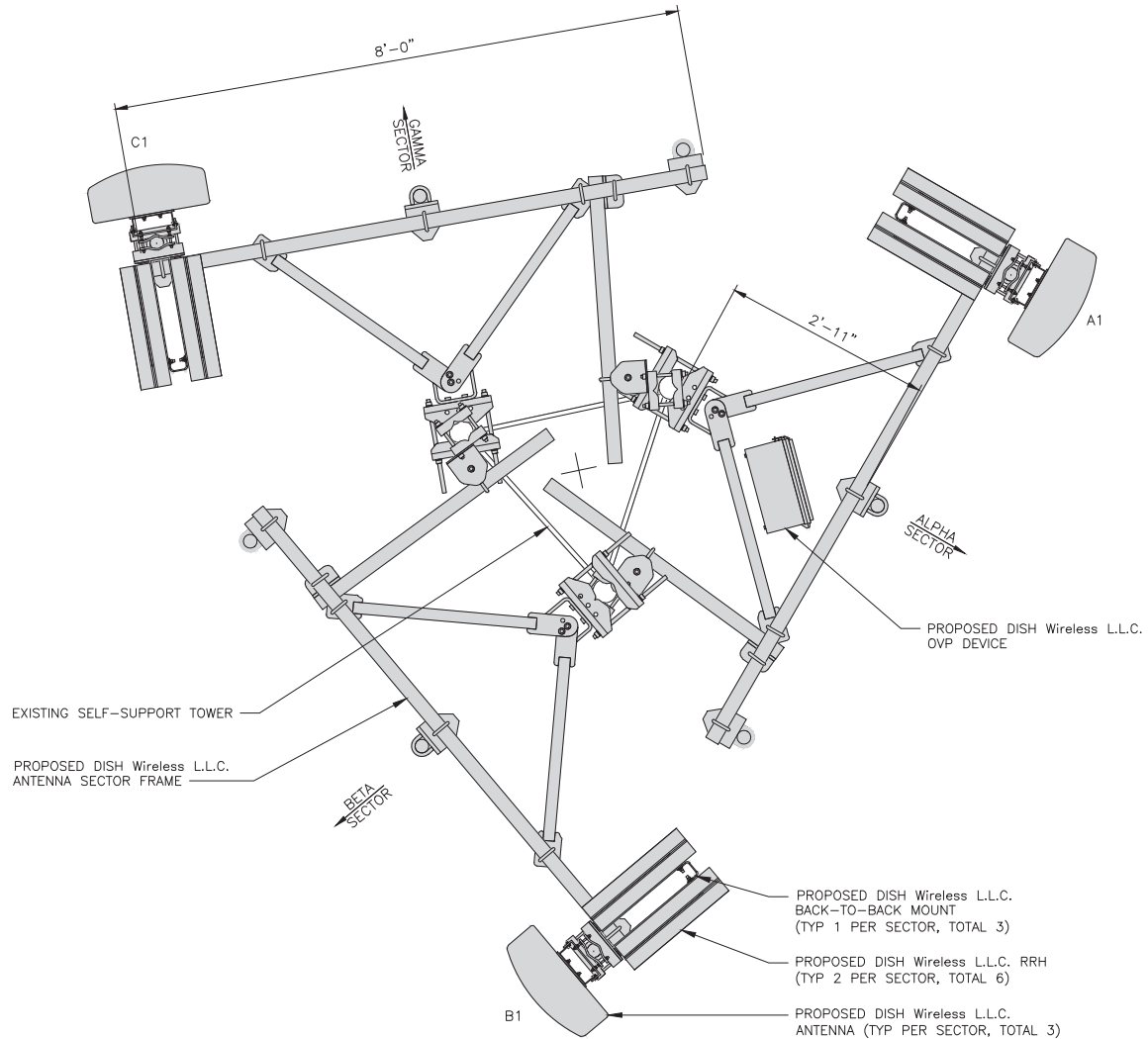
1. CONTRACTOR SHALL FIELD VERIFY ALL DIMENSIONS.
2. ANTENNA AND MW DISH SPECIFICATIONS REFER TO ANTENNA SCHEDULE AND TO FINAL CONSTRUCTION RFDS FOR ALL RF DETAILS
3. EXISTING EQUIPMENT AND FENCE OMITTED FOR CLARITY.



PROPOSED SOUTHEAST ELEVATION

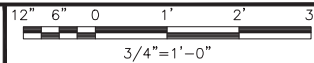


1



*AZIMUTHS ARE TENTATIVE, CONTRACTOR SHALL CONFIRM BEFORE THE CONSTRUCTION STARTS.

ANTENNA LAYOUT



2

SECTOR	POSITION	ANTENNA						TRANSMISSION CABLE	
		EXISTING OR PROPOSED	MANUFACTURER - MODEL NUMBER	TECHNOLOGY	SIZE (HxW)	AZIMUTH	RAD CENTER	FEED LINE TYPE AND LENGTH	
ALPHA	A1	PROPOSED	JMA - MX08FR0665-21	5G	72.0" x 20.0"	120°	158'-0"	(1) HIGH-CAPACITY HYBRID CABLE (187' LONG)	
BETA	B1	PROPOSED	JMA - MX08FR0665-21	5G	20.0" x 11.0"	230°	158'-0"		
GAMMA	C1	PROPOSED	JMA - MX08FR0665-21	5G	20.0" x 11.0"	350°	158'-0"		
SECTOR	POSITION	MICROWAVE DISH						TRANSMISSION CABLE	
		EXISTING OR PROPOSED	MANUFACTURER - MODEL NUMBER	TECHNOLOGY	DIAMETER	AZMUTH	RAD CENTER	FEED LINE TYPE AND LENGTH	
ALPHA	2	PROPOSED	RAYCAP RDIDC-9181-PF-48	5G	16"x14"x8"	90°	158'-0"	(1) HIGH-CAPACITY HYBRID CABLE (187' LONG)	

SECTOR	POSITION	RRH	
		MANUFACTURER - MODEL NUMBER	TECHNOLOGY
ALPHA	A1	FUJITSU - TA08025-B605	5G
	A1	FUJITSU - TA08025-B604	5G
BETA	B1	FUJITSU - TA08025-B605	5G
	B1	FUJITSU - TA08025-B604	5G
GAMMA	C1	FUJITSU - TA08025-B605	5G
	C1	FUJITSU - TA08025-B604	5G

NOTES

1. CONTRACTOR TO REFER TO FINAL CONSTRUCTION RFDS FOR ALL RF DETAILS.
2. ANTENNA AND RRH MODELS MAY CHANGE DUE TO EQUIPMENT AVAILABILITY. ALL EQUIPMENT CHANGES MUST BE APPROVED AND REMAIN IN COMPLIANCE WITH THE PROPOSED DESIGN AND STRUCTURAL ANALYSES.

ANTENNA SCHEDULE

NO SCALE

3

dish
wireless.

5701 SOUTH SANTA FE DRIVE
LITTLETON, CO 80120



MTS TELECOM, L.L.C.
1717 S. BOULDER,
SUITE 300
TULSA, OK 74119
PH: (918) 587-4630
btwo@bgrp.com



MTS TELECOM, L.L.C.
COA# 24CA28343300
EXPIRES 8/31/22

IT IS A VIOLATION OF LAW FOR ANY PERSON,
UNLESS THEY ARE ACTING UNDER THE DIRECTION
OF A LICENSED PROFESSIONAL ENGINEER,
TO ALTER THIS DOCUMENT.

DRAWN BY: CHECKED BY: APPROVED BY:

JJR/ANP JJR/LR PDS

RFDS REV #: 3

CONSTRUCTION
DOCUMENTS

SUBMITTALS		
REV	DATE	DESCRIPTION
A	6/15/21	ISSUED FOR REVIEW
0	10/12/21	ISSUED FOR CONSTRUCTION
1	12/20/21	ISSUED FOR CONSTRUCTION
2	5/16/22	ISSUED FOR CONSTRUCTION
3	5/26/22	ISSUED FOR CONSTRUCTION

A&E PROJECT NUMBER

109333.005.01

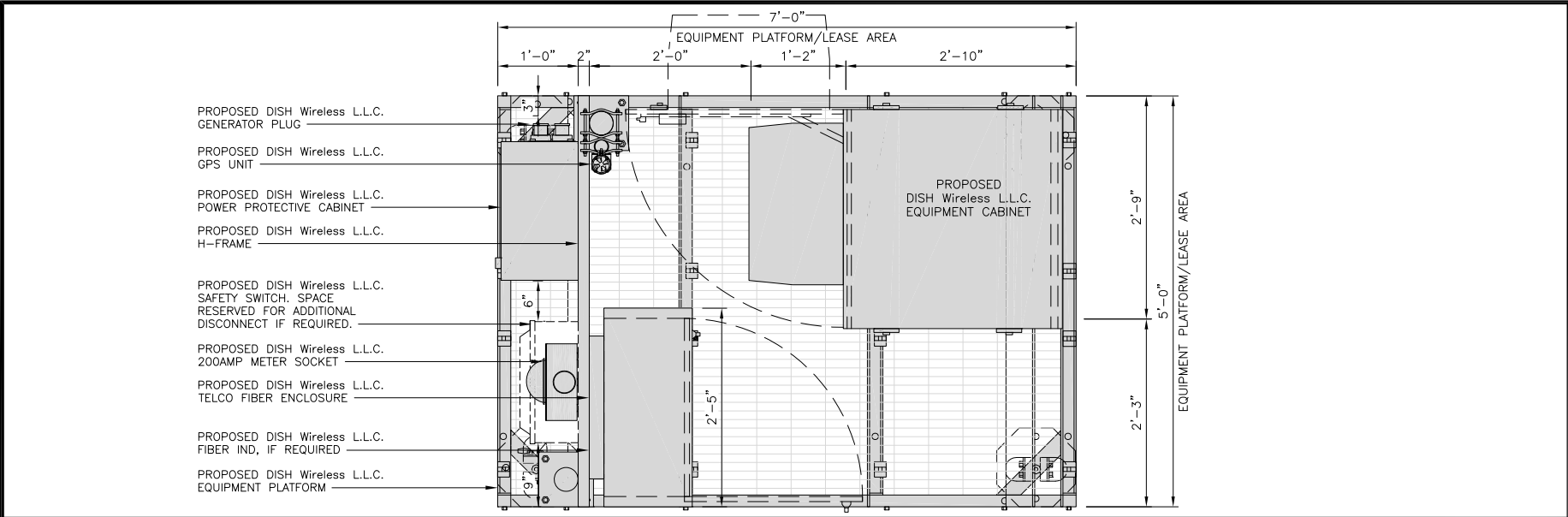
DISH Wireless L.L.C.
PROJECT INFORMATION

NJJER01580A
2 GOWIN STREET
SAYREVILLE, NJ 08872
BLOCK 333.01 LOT 7

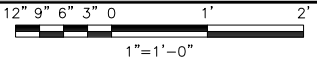
SHEET TITLE
ELEVATION, ANTENNA
LAYOUT AND SCHEDULE

SHEET NUMBER

A-2



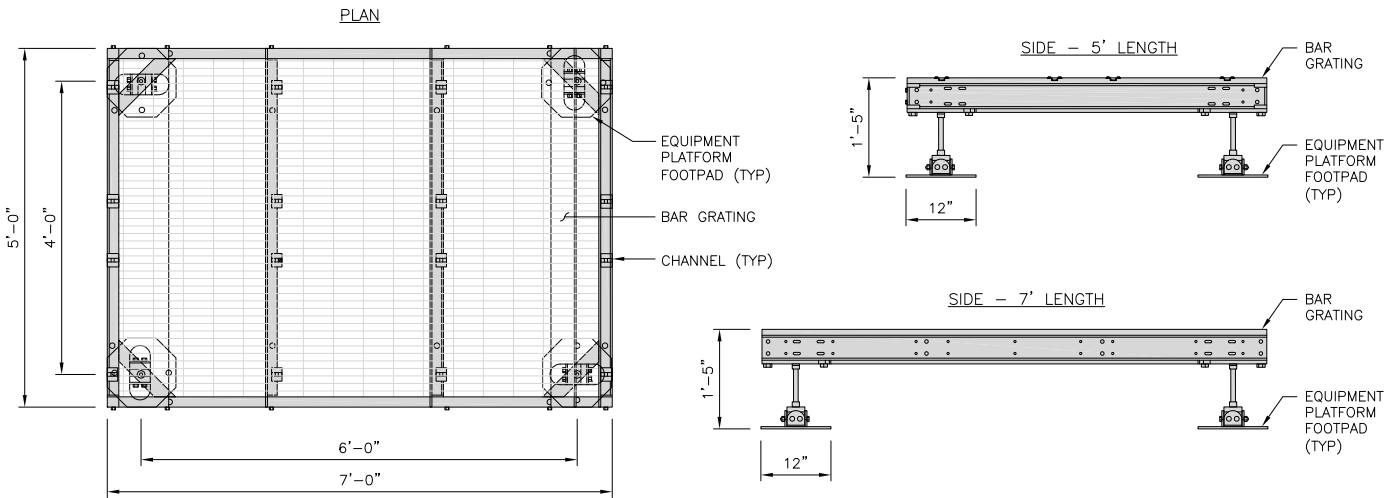
PLATFORM EQUIPMENT PLAN



1

COMMSCOPE MTC4045LP 5X7 PLATFORM	
DIMENSIONS (HxWxD)	16"x84"x60"
TOTAL WEIGHT	423 LBS

NOTE:
GC TO PROVIDE EXTENDED
THREAD FOR PLATFORM IF
REQUIRED HEIGHT EXCEEDS 17"

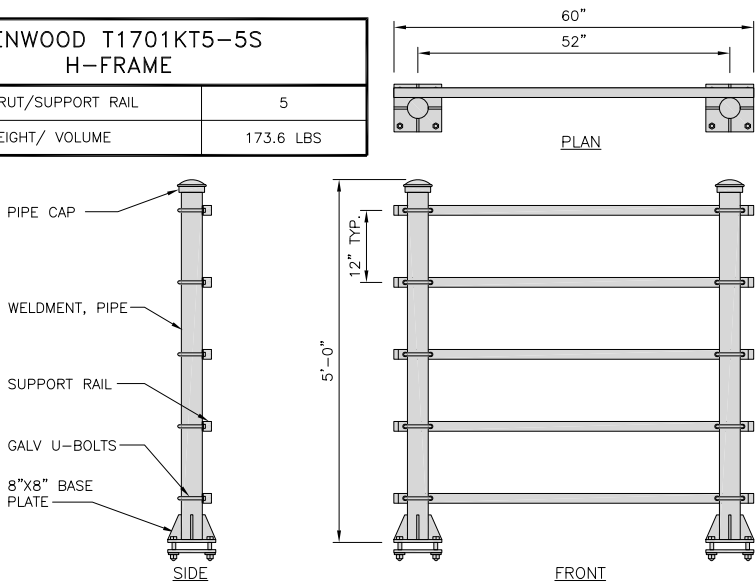


PLATFORM DETAIL

NO SCALE

2

KENWOOD T1701KT5-5S H-FRAME	
UNISTRUT/SUPPORT RAIL	5
WEIGHT/ VOLUME	173.6 LBS



H-FRAME DETAIL

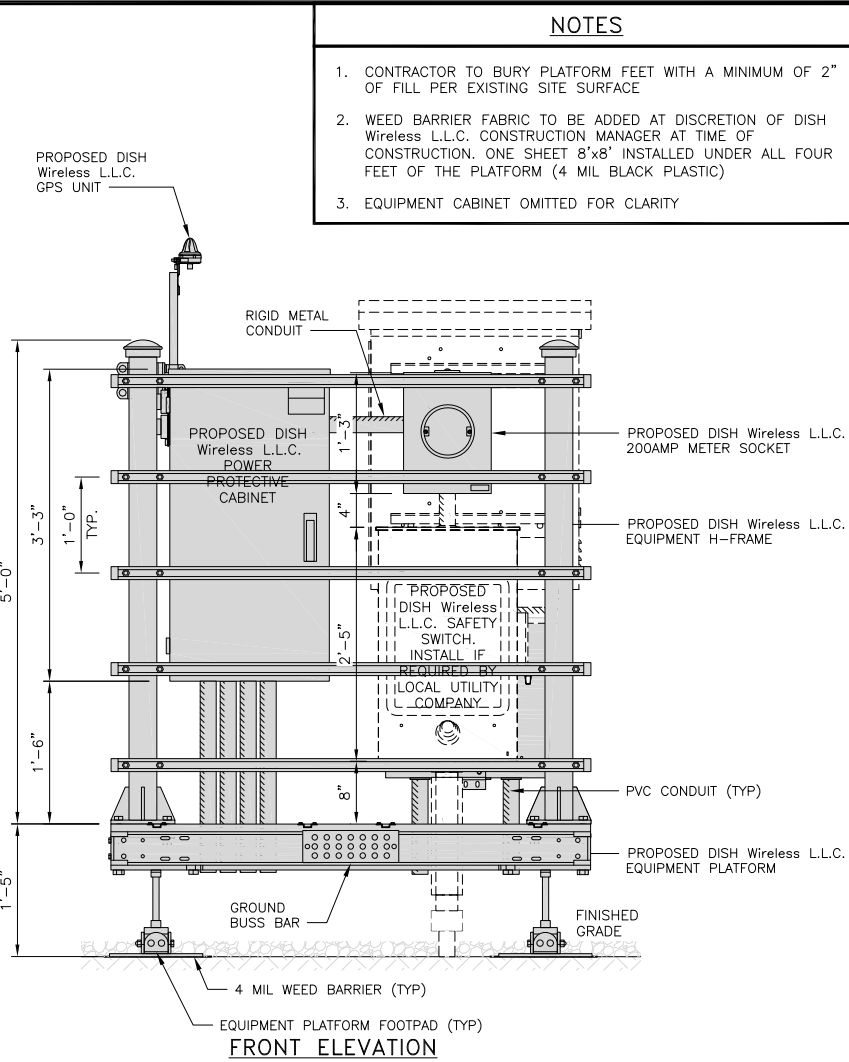
NO SCALE

3

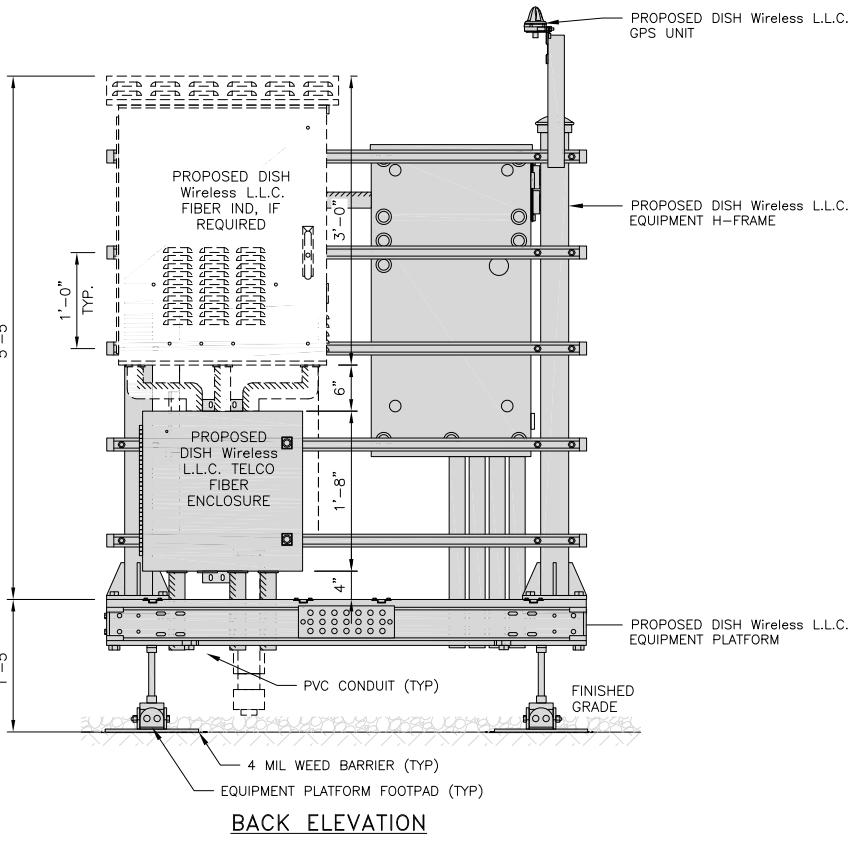
NOT USED

NO SCALE

4



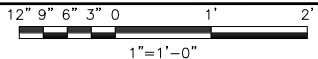
FRONT ELEVATION



BACK ELEVATION

NOTES

1. CONTRACTOR TO BURY PLATFORM FEET WITH A MINIMUM OF 2" OF FILL PER EXISTING SITE SURFACE
2. WEED BARRIER FABRIC TO BE ADDED AT DISCRETION OF DISH Wireless L.L.C. CONSTRUCTION MANAGER AT TIME OF CONSTRUCTION. ONE SHEET 8'x8' INSTALLED UNDER ALL FOUR FEET OF THE PLATFORM (4 MIL BLACK PLASTIC)
3. EQUIPMENT CABINET OMITTED FOR CLARITY



5

dish
wireless.

5701 SOUTH SANTA FE DRIVE
LITTLETON, CO 80120



MTS TELECOM, L.L.C.
1717 S. BOULDER,
SUITE 300
TULSA, OK 74119
PH: (918) 587-4630
btwo@bgrp.com



MTS TELECOM, L.L.C.
COA# 24CA28343300
EXPIRES 8/31/22

IT IS A VIOLATION OF LAW FOR ANY PERSON,
UNLESS THEY ARE ACTING UNDER THE DIRECTION
OF A LICENSED PROFESSIONAL ENGINEER,
TO ALTER THIS DOCUMENT.

DRAWN BY: CHECKED BY: APPROVED BY:

JJR/ANP JJR/LR PDS

RFDS REV #: 3

CONSTRUCTION
DOCUMENTS

SUBMITTALS		
REV	DATE	DESCRIPTION
A	6/15/21	ISSUED FOR REVIEW
0	10/12/21	ISSUED FOR CONSTRUCTION
1	12/20/21	ISSUED FOR CONSTRUCTION
2	5/16/22	ISSUED FOR CONSTRUCTION
3	5/26/22	ISSUED FOR CONSTRUCTION

A&E PROJECT NUMBER
109333.005.01

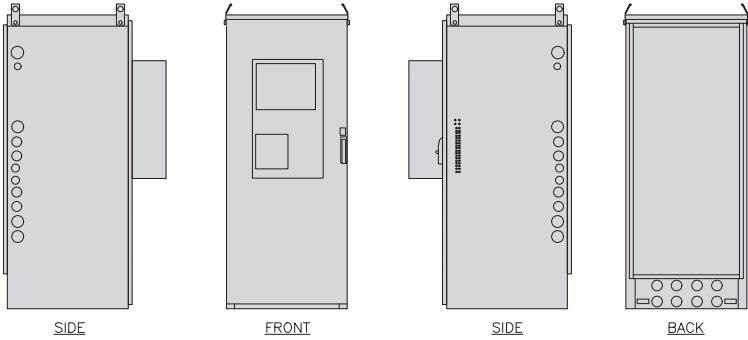
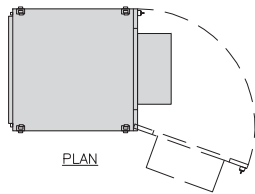
DISH Wireless L.L.C.
PROJECT INFORMATION
NJJER01580A
2 GOWIN STREET
SAYREVILLE, NJ 08872
BLOCK 333.01 LOT 7

SHEET TITLE
EQUIPMENT PLATFORM AND
H-FRAME DETAILS

SHEET NUMBER

A-3

ENERSYS HVAC CABINET 2000005995	
DIMENSIONS (HxWxD):	73"x30"x32"
WEIGHT EMPTY:	371 lbs
HVAC	600W
POWER SYSTEM	-48V ALPHA/600A

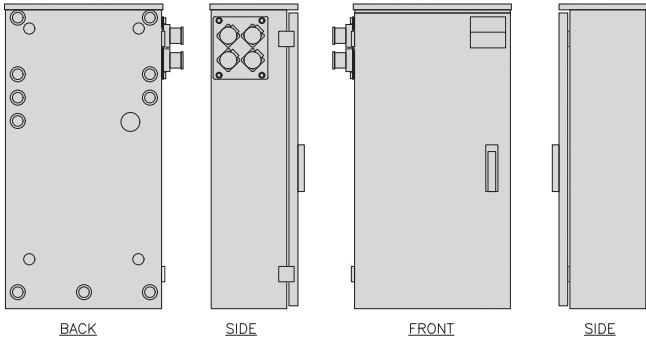
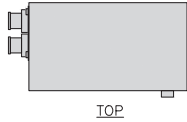


CABINET DETAIL

NO SCALE

1

RAYCAP PPC RDIAC-2465-P-240-MTS	
ENCLOSURE DIMENSIONS (HxWxD):	39"x22.855"x12.593
WEIGHT:	80 lbs
OPERATING AC VOLTAGE	240/120 1 PHASE 3W+G

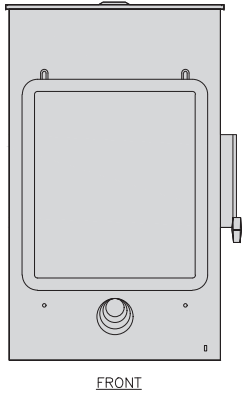
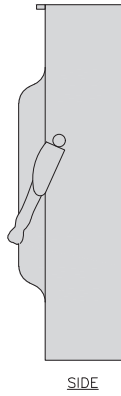
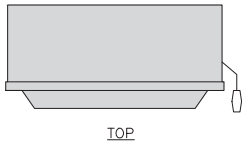


POWER PROTECTION CABINET (PPC) DETAIL

NO SCALE

2

SQUARE D SAFETY SWITCHES D224NRB	
ENCLOSURE DIM (HxWxD)	29.25"x19.00"x8.50"
ENCLOSURE TYPE	NEMA 3R RAINPROOF
UL LISTED	FILE E-2875

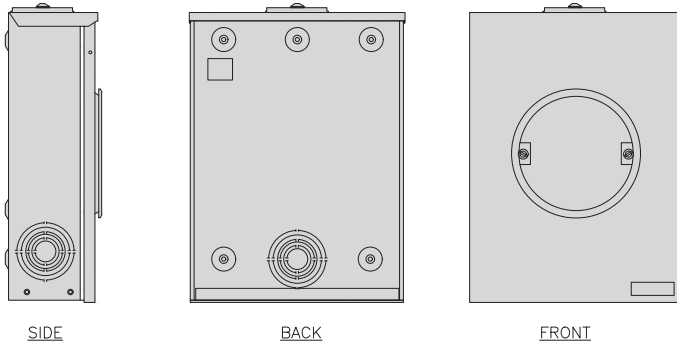
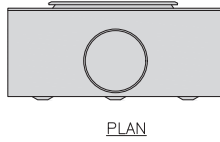


SAFETY SWITCH DETAIL

NO SCALE

3

EATON METER SOCKET UNRRS213BEUSE	
METER SOCKET TYPE	RING
ENCLOSURE DIM (HxWxD)	16"x12"x6"
MAIN AMPERE RATING	200A
WEIGHT	18 LBS

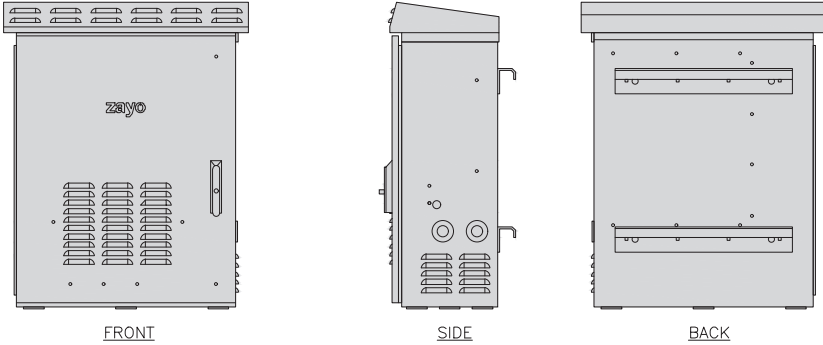
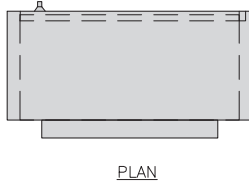


METER SOCKET DETAIL

NO SCALE

4

ZAYO 5RU CABINET LEFT SWING DOOR ("LIT" SITES)	
DIMENSIONS (HxWxD)	36.115"x29"x12.9"
WEIGHT	85 LBS
POWER INPUT	20A, -48VDC

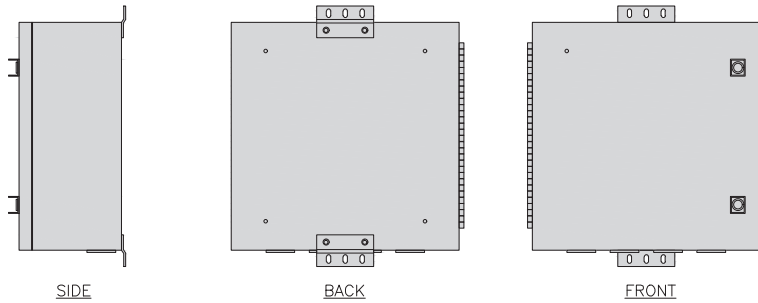


NETWORK INTERFACE UNIT DETAIL

NO SCALE

5

CHARLES CFIT-PF2020DSH1 FIBER TELCO ENCLOSURE	
ENCLOSURE DIMS (HxWxD)	20"x20"x9"
ENCLOSURE WEIGHT	20 lbs
MOUNTING	WALL
COMPLIANCE	TYPE 4



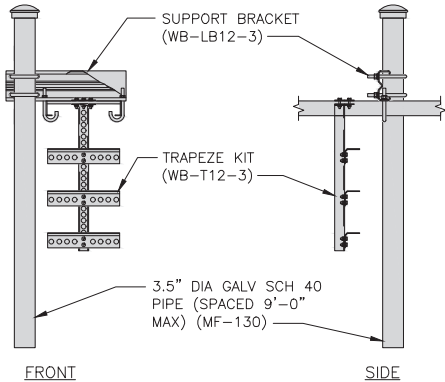
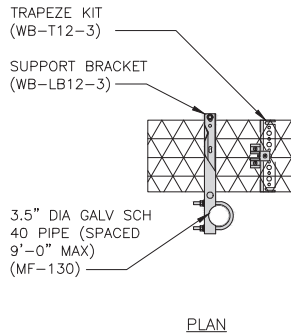
FIBER TELCO ENCLOSURE DETAIL

NO SCALE

6

COMMSCOPE WB-K110-B WAVEGUIDE BRIDGE KIT	
DIMENSIONS (HxL)	160"x10'
WEIGHT/ VOLUME	325.0 LBS
CABLE RUN (QTY)	12

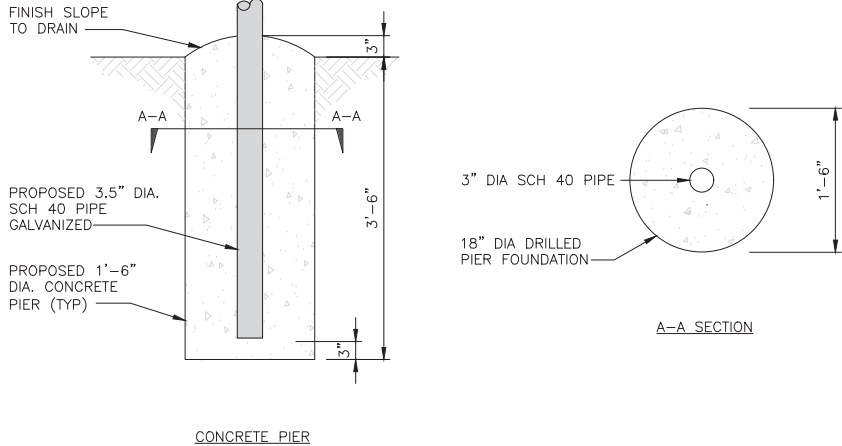
INCLUDED PRODUCTS:
WB-T12-3 TRAPEZE KIT,
3 RUNGS
WB-LB12-3 SUPPORT BRACKET
MF-130 DIRECT BURIAL PIPE
COLUMN, 13'-4"



ICE BRIDGE DETAIL

NO SCALE

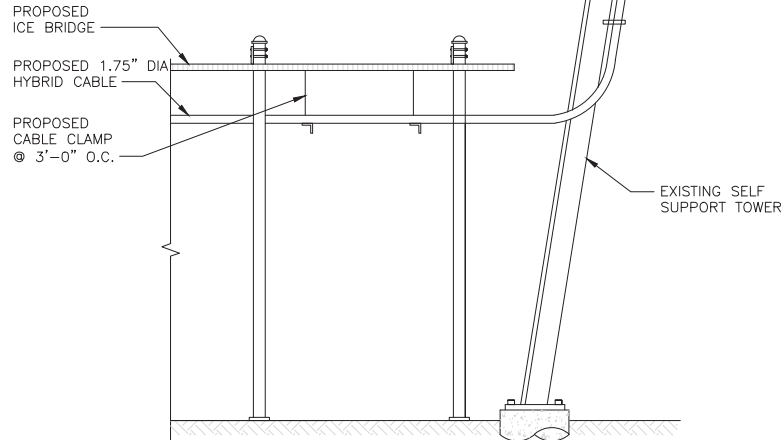
7



TYPICAL ICE BRIDGE CONCRETE PIER DETAIL

NO SCALE

8



HYBRID CABLE RUN

NO SCALE

9

dish
wireless.

5701 SOUTH SANTA FE DRIVE
LITTLETON, CO 80120

B+T GRP
MTS TELECOM, L.L.C.
1717 S. BOULDER,
SUITE 300
TULSA, OK 74119
PH: (918) 587-4630
btwo@bgrp.com



MTS TELECOM, L.L.C.
COA# 24GA28343300
EXPIRES 8/31/22

IT IS A VIOLATION OF LAW FOR ANY PERSON,
UNLESS THEY ARE ACTING UNDER THE DIRECTION
OF A LICENSED PROFESSIONAL ENGINEER,
TO ALTER THIS DOCUMENT.

DRAWN BY: CHECKED BY: APPROVED BY:

JJR/ANP JJR/LR PDS

RFDS REV #: 3

CONSTRUCTION DOCUMENTS

SUBMITTALS		
REV	DATE	DESCRIPTION
A	6/15/21	ISSUED FOR REVIEW
0	10/12/21	ISSUED FOR CONSTRUCTION
1	12/20/21	ISSUED FOR CONSTRUCTION
2	5/16/22	ISSUED FOR CONSTRUCTION
3	5/26/22	ISSUED FOR CONSTRUCTION

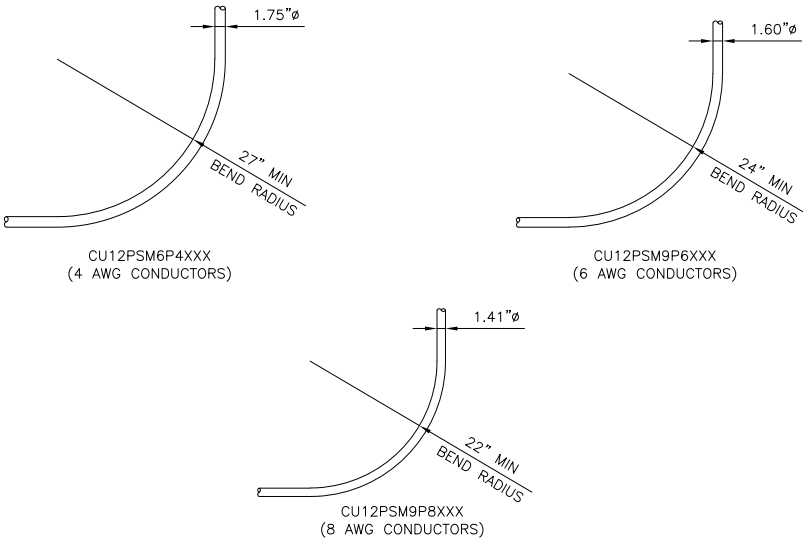
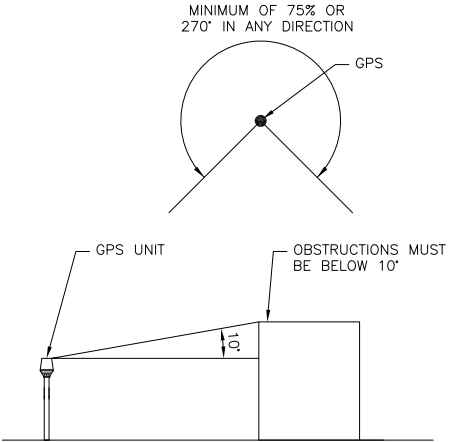
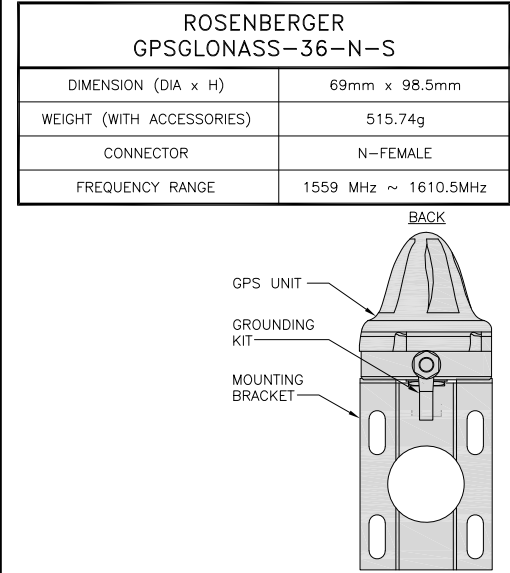
A&E PROJECT NUMBER
109333.005.01

DISH Wireless L.L.C.
PROJECT INFORMATION
NJJER01580A
2 GOWIN STREET
SAYREVILLE, NJ 08872
BLOCK 333.01 LOT 7

SHEET TITLE
EQUIPMENT DETAILS

SHEET NUMBER

A-4



GPS ANTENNA DETAIL

NO SCALE

1

GPS MINIMUM SKY VIEW REQUIREMENTS

NO SCALE

2

CABLES UNLIMITED HYBRID CABLE
MINIMUM BEND RADIUSES

NO SCALE

3

NOT USED

NO SCALE

4

NOT USED

NO SCALE

5

NOT USED

NO SCALE

6

NOT USED

NO SCALE

7

NOT USED

NO SCALE

8

NOT USED

NO SCALE

9

dish
wireless.

5701 SOUTH SANTA FE DRIVE
LITTLETON, CO 80120

B+T GRP

MTS TELECOM, L.L.C.
1717 S. BOULDER,
SUITE 300
TULSA, OK 74119
PH: (918) 587-4630
btwo@btgrp.com

STATE OF
NEW JERSEY
PETER D. SMITH
GE056608
LICENSED
PROFESSIONAL ENGINEER

MTS TELECOM, L.L.C.
COA# 24CA28343300
EXPIRES 8/31/22

IT IS A VIOLATION OF LAW FOR ANY PERSON,
UNLESS THEY ARE ACTING UNDER THE DIRECTION
OF A LICENSED PROFESSIONAL ENGINEER,
TO ALTER THIS DOCUMENT.

DRAWN BY:CHECKED BY:APPROVED BY:

JJR/ANP

JJR/LR

PDS

RFDS REV #:3

CONSTRUCTION
DOCUMENTS

SUBMITTALS

REV	DATE	DESCRIPTION
A	6/15/21	ISSUED FOR REVIEW
0	10/12/21	ISSUED FOR CONSTRUCTION
1	12/20/21	ISSUED FOR CONSTRUCTION
2	5/16/22	ISSUED FOR CONSTRUCTION
3	5/26/22	ISSUED FOR CONSTRUCTION

A&E PROJECT NUMBER

109333.005.01

DISH Wireless L.L.C.
PROJECT INFORMATION

NJJER01580A
2 GOWIN STREET
SAYREVILLE, NJ 08872
BLOCK 333.01 LOT 7

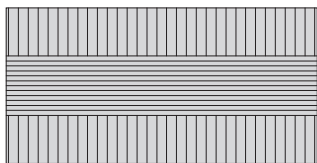
SHEET TITLE

EQUIPMENT DETAILS

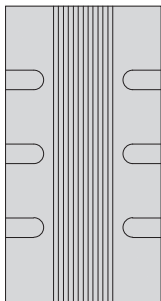
SHEET NUMBER

A-5

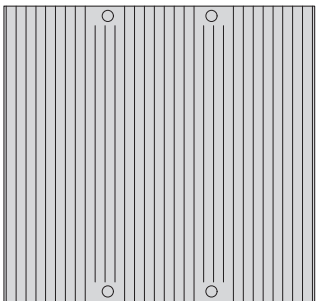
FUJITSU TA08025-B604 RRH	
DIMENSIONS (HxWxD) (KG/IN)	380x400x200/14.9"x15.7"x7.8"
WEIGHT(KG,LB)/ VOLUME	29kg,63.9lb/ 30L
POWER SUPPLY	DC-58~-36V



PLAN

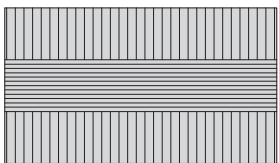


SIDE

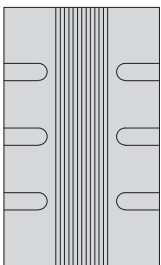


FRONT

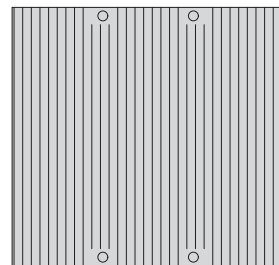
FUJITSU TA08025-B605 RRH	
DIMENSIONS (HxWxD) (KG/IN)	380x400x230/14.9"x15.7"x9.0"
WEIGHT(KG,LB)/ VOLUME	34kg,74.9lb/ 35L
POWER SUPPLY	DC-58~-36V



PLAN



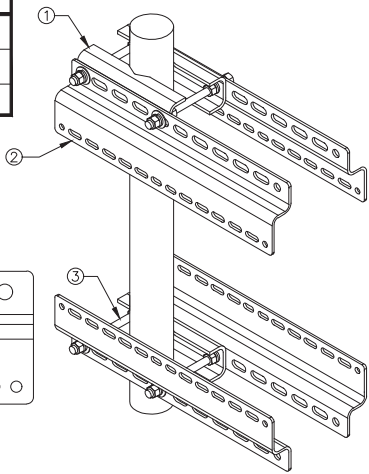
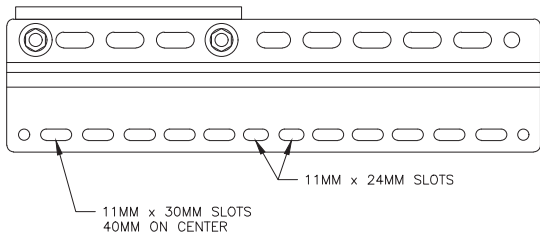
SIDE



FRONT

SABRE INDUSTRIES RRU BRACKET MOUNT C10123155	
DIMENSIONS (HxWxD) (1 BRACKET)	5"x20"x1-13/16"
WEIGHT (FULL ASSEMBLY)	35.79 lbs
PACKAGE QUANTITY	4

ITEM#	DESCRIPTION
1	PLATE, CHANNEL BRACKET
2	RRH Z BRACKET, 3/16"
3	THREADED ROD ASSEMBLY 1/2"x12"



REMOTE RADIO HEAD DETAIL

NO SCALE

1

REMOTE RADIO HEAD DETAIL

NO SCALE

2

REMOTE RADIO MOUNT DETAIL

NO SCALE

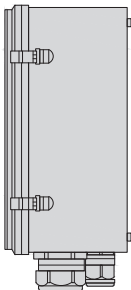
3

RAYCAP RDIDC-9181-PF-48
DC SURGE PROTECTION (OVP)

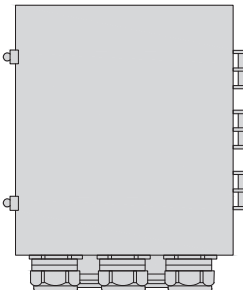
DIMENSIONS (HxWxD)	18.98"x14.39"x8.15"
WEIGHT	21.82 LBS



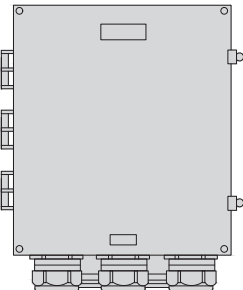
PLAN



SIDE



BACK



FRONT

JMA WIRELESS
MX08FR0665-21 ANTENNA

DIMENSIONS (HxWxD)	72.0"x20.0"x8.0"
TOTAL WEIGHT	64.5 LB
RF PORTS, CONNECTOR TYPE	8 x 4.3-10 FEMALE



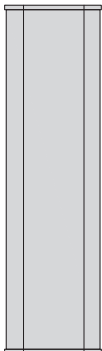
PLAN



BACK



SIDE



FRONT

SURGE SUPPRESSION DETAIL (OVP)

NO SCALE

4

ANTENNA DETAIL

NO SCALE

5

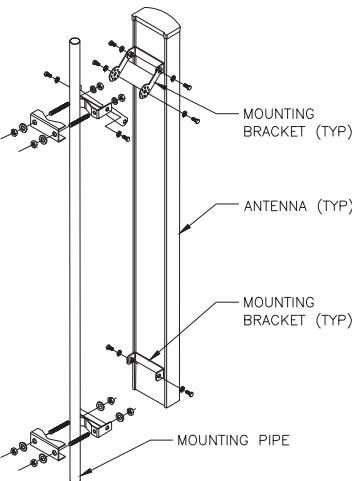
NOT USED

NO SCALE

6

M04 MOUNTING BRACKET
HPA-33R-BUU-H4-K

WIDTH	5" (135mm)
DEPTH	2" (51mm)
HEIGHT	8" (213mm)
TOTAL WEIGHT (WITH BRACKETS)	1.5 LBS (15.50 Kg)
HOUSING MATERIAL	ASA/ABS/ALUMINUM
RADOME COLOR	LIGHT GRAY
CONNECTOR	1X8-PIN DAISY CHAIN



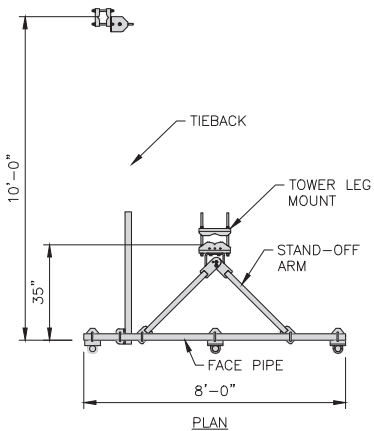
ANTENNA MOUNTING DETAIL

NO SCALE

7

COMMSCOPE V-FRAME
MTC3975083

FACE SIZE	8'-0"
WEIGHT	352.136 lbs



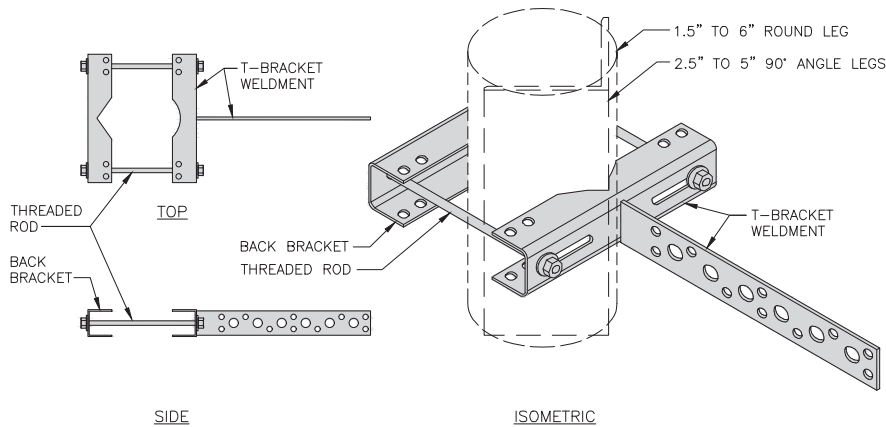
ANTENNA FRAME DETAIL

NO SCALE

8

SITEPRO1 T600
UNIVERSAL T-BRACKET

DIMENSIONS (HxWxL)	2.25"x10.0"x15.25"
WEIGHT/ VOLUME	5.60 LBS



VERTICAL CABLE SUPPORT DETAIL

NO SCALE

9



5701 SOUTH SANTA FE DRIVE
LITTLETON, CO 80120



MTS TELECOM, L.L.C.
1717 S. BOULDER,
SUITE 300
TULSA, OK 74119
PH: (918) 587-4630
btwo@bgrp.com



MTS TELECOM, L.L.C.
COA# 24CA28343300
EXPIRES 8/31/22

IT IS A VIOLATION OF LAW FOR ANY PERSON,
UNLESS THEY ARE ACTING UNDER THE DIRECTION
OF A LICENSED PROFESSIONAL ENGINEER,
TO ALTER THIS DOCUMENT.

DRAWN BY: CHECKED BY: APPROVED BY:

JJR/ANP JJR/LR PDS

RFDS REV #: 3

CONSTRUCTION
DOCUMENTS

REV	DATE	DESCRIPTION
A	6/15/21	ISSUED FOR REVIEW
0	10/12/21	ISSUED FOR CONSTRUCTION
1	12/20/21	ISSUED FOR CONSTRUCTION
2	5/16/22	ISSUED FOR CONSTRUCTION
3	5/26/22	ISSUED FOR CONSTRUCTION

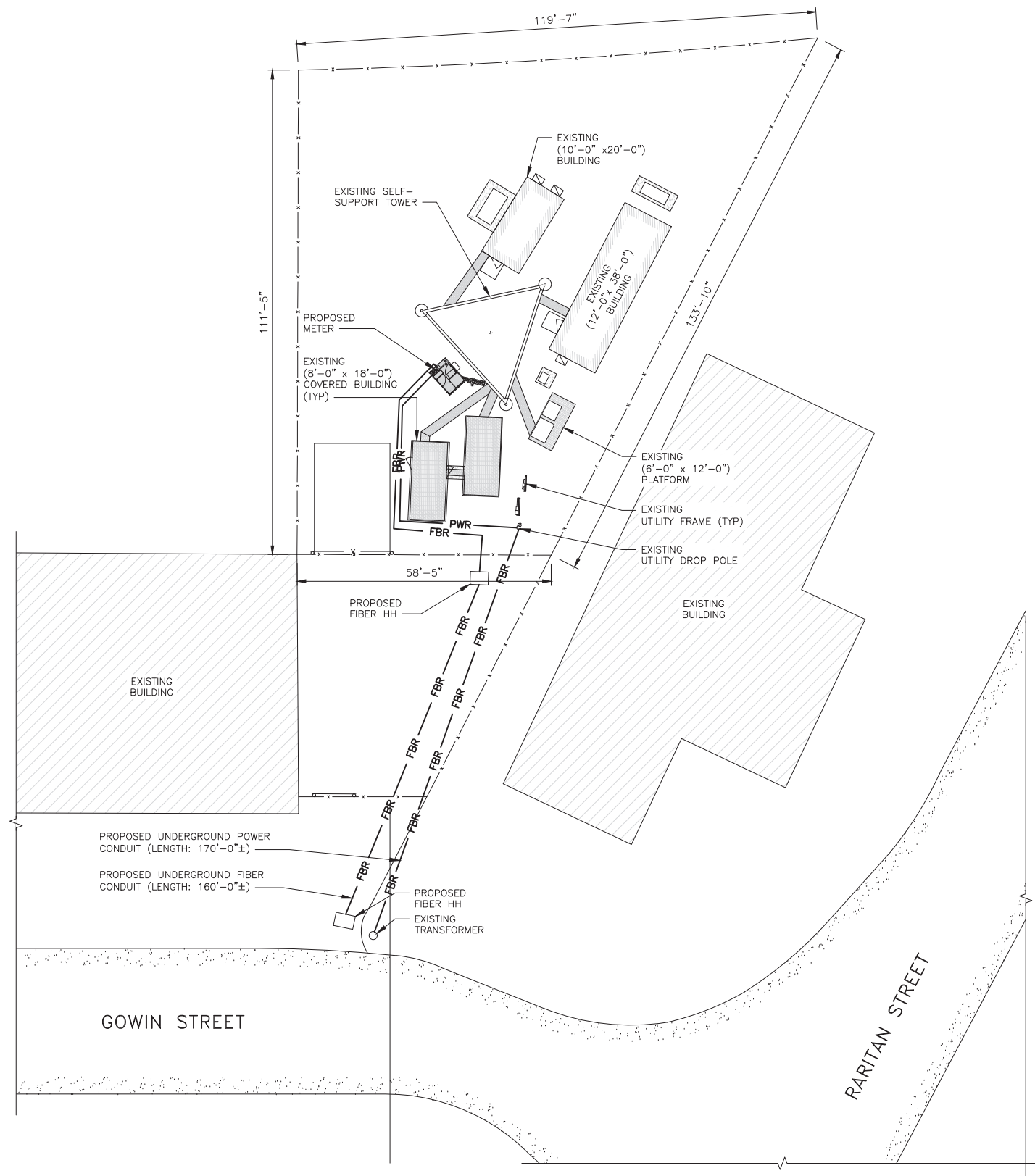
A&E PROJECT NUMBER
109333.005.01

DISH Wireless L.L.C.
PROJECT INFORMATION
NJJER01580A
2 GOWIN STREET
SAYREVILLE, NJ 08872
BLOCK 333.01 LOT 7

SHEET TITLE
EQUIPMENT DETAILS

SHEET NUMBER

A-6



UTILITY ROUTE PLAN

DC POWER WIRING SHALL BE COLOR CODED AT EACH END FOR IDENTIFYING +24V AND -48V CONDUCTORS. RED MARKINGS SHALL IDENTIFY +24V AND BLUE MARKINGS SHALL IDENTIFY -48V.

1. CONTRACTOR SHALL INSPECT THE EXISTING CONDITIONS PRIOR TO SUBMITTING A BID. ANY QUESTIONS ARISING DURING THE BID PERIOD IN REGARDS TO THE CONTRACTOR'S FUNCTIONS, THE SCOPE OF WORK, OR ANY OTHER ISSUE RELATED TO THIS PROJECT SHALL BE BROUGHT UP DURING THE BID PERIOD WITH THE PROJECT MANAGER FOR CLARIFICATION, NOT AFTER THE CONTRACT HAS BEEN AWARDED.
2. ALL ELECTRICAL WORK SHALL BE DONE IN ACCORDANCE WITH CURRENT NATIONAL ELECTRICAL CODES AND ALL STATE AND LOCAL CODES, LAWS, AND ORDINANCES. PROVIDE ALL COMPONENTS AND WIRING SIZES AS REQUIRED TO MEET NEC STANDARDS.
3. LOCATION OF EQUIPMENT, CONDUIT AND DEVICES SHOWN ON THE DRAWINGS ARE APPROXIMATE AND SHALL BE COORDINATED WITH FIELD CONDITIONS PRIOR TO CONSTRUCTION.
4. CONDUIT ROUGH-IN SHALL BE COORDINATED WITH THE MECHANICAL EQUIPMENT TO AVOID LOCATION CONFLICTS. VERIFY WITH THE MECHANICAL EQUIPMENT CONTRACTOR AND COMPLY AS REQUIRED.
5. CONTRACTOR SHALL PROVIDE ALL BREAKERS, CONDUITS AND CIRCUITS AS REQUIRED FOR A COMPLETE SYSTEM.
6. CONTRACTOR SHALL PROVIDE PULL BOXES AND JUNCTION BOXES AS REQUIRED BY THE NEC ARTICLE 314.
7. CONTRACTOR SHALL PROVIDE ALL STRAIN RELIEF AND CABLE SUPPORTS FOR ALL CABLE ASSEMBLIES. INSTALLATION SHALL BE IN ACCORDANCE WITH MANUFACTURER'S SPECIFICATIONS AND RECOMMENDATIONS.
8. ALL DISCONNECTS AND CONTROLLING DEVICES SHALL BE PROVIDED WITH ENGRAVED PHENOLIC NAMEPLATES INDICATING EQUIPMENT CONTROLLED, BRANCH CIRCUITS INSTALLED ON, AND PANEL FIELD LOCATIONS FED FROM.
9. INSTALL AN EQUIPMENT GROUNDING CONDUCTOR IN ALL CONDUITS PER THE SPECIFICATIONS AND NEC 250. THE EQUIPMENT GROUNDING CONDUCTORS SHALL BE BONDED AT ALL JUNCTION BOXES, PULL BOXES, AND ALL DISCONNECT SWITCHES, AND EQUIPMENT CABINETS.
10. ALL NEW MATERIAL SHALL HAVE A U.L. LABEL.
11. PANEL SCHEDULE LOADING AND CIRCUIT ARRANGEMENTS REFLECT POST-CONSTRUCTION EQUIPMENT.
12. CONTRACTOR SHALL BE RESPONSIBLE FOR AS-BUILT PANEL SCHEDULE AND SITE DRAWINGS.
13. ALL TRENCHES IN COMPOUND TO BE HAND DUG



ELECTRICAL NOTES

NO SCALE

2



5701 SOUTH SANTA FE DRIVE
LITTLETON, CO 80120



TS TELECOM, L.L.C.
717 S. BOULDER,
SUITE 300
MULSA, OK 74119
PH: (918) 587-4630
info@btgrp.com



MTS TELECOM, L.L.C.
COA# 24GA28343300
EXPIRES 8/31/22

IT IS A VIOLATION OF LAW FOR ANY PERSON,
UNLESS THEY ARE ACTING UNDER THE DIRECTION
OF A LICENSED PROFESSIONAL ENGINEER,
TO ALTER THIS DOCUMENT.

DRAWN BY:	CHECKED BY:	APPROVED BY:
-----------	-------------	--------------

JJR/ANP	JJR/LR	PDS
---------	--------	-----

RFDS REV #: 3

CONSTRUCTION
DOCUMENTS

SUBMITTALS

REV	DATE	DESCRIPTION
A	6/15/21	ISSUED FOR REVIEW
0	10/12/21	ISSUED FOR CONSTRUCTION
1	12/20/21	ISSUED FOR CONSTRUCTION
2	5/16/22	ISSUED FOR CONSTRUCTION
3	5/26/22	ISSUED FOR CONSTRUCTION

A&E PROJECT NUMBER
109333.005.01

DISH Wireless L.L.C.
PROJECT INFORMATION
NJJER01580A
2 GOWIN STREET
SAYREVILLE, NJ 08872
BLOCK 333.01 LOT 7

SHEET TITLE	
ELECTRICAL/FIBER ROUTE PLAN AND NOTES	

SHEET NUMBER

E-1

CARLON EXPANSION FITTINGS

COUPLING END PART#	MALE TERMINAL ADAPTER END PART#	SIZE	STD CTN QTY.	TRAVEL LENGTH
E945D	E945DX	1/2"	20	4"
E945E	E945EX	3/4"	15	4"
E945F	E945FX	1"	10	4"
E945G	E945GX	1 1/4"	5	4"
E945H	E945HX	1 1/2"	5	4"
E945J	E945JX	2"	15	8"
E945K	E945KX	2 1/2"	10	8"
E945L	E945LX	3"	10	8"
E945M	E945MX	3 1/2"	5	8"
E945N	E945NX	4"	5	8"
E945P	E945PX	5"	1	8"
E945R	E945RX	6"	1	8"

VARIES PER PART NUMBER

2'-0"

SLIP JOINT (SEE CHART FOR PART NUMBER)

NOTE: CONTRACTOR TO INSTALL EXPANSION FITTING SLIP JOINT AT METER CENTER CONDUIT TERMINATION, AS PER LOCAL UTILITY POLICY, ORDINANCE AND/OR SPECIFIED REQUIREMENT.

TRENCHING NOTES

1. CONTRACTOR SHALL RESTORE THE TRENCH TO ITS ORIGINAL CONDITIONS BY EITHER SEEDING OR SODDING GRASS AREAS, OR REPLACING ASPHALT OR CONCRETE AREAS TO ITS ORIGINAL CROSS SECTION.

2. TRENCHING SAFETY; INCLUDING, BUT NOT LIMITED TO SOIL CLASSIFICATION, SLOPING, AND SHORING, SHALL BE GOVERNED BY THE CURRENT OSHA TRENCHING AND EXCAVATION SAFETY STANDARDS.

3. ALL CONDUITS SHALL BE INSTALLED IN COMPLIANCE WITH THE CURRENT NATIONAL ELECTRIC CODE (NEC) OR AS REQUIRED BY THE LOCAL JURISDICTION, WHICHEVER IS THE MOST STRINGENT.

SEE TRENCHING NOTE 1

BACKFILL PER SITE WORK SPECIFICATIONS (SEE GENERAL NOTES)

SLOPE TO SUIT SOIL CONDITION IN ACCORDANCE WITH LOCAL REGULATIONS SEE TRENCHING NOTE 2

30" OR 6" BELOW FROST LINE, WHICHEVER IS GREATER

UTILITY WARNING TAPE

SAND BEDDING PER SITE WORK SPECIFICATIONS

1'-0"

1'-0"

VERTICAL DEPTH SEE TRENCHING NOTE 2

DISH Wireless L.L.C. PROVIDES 12AWG WIRE (6' TAIL)

PROPOSED DISH Wireless L.L.C. UNISTRUT

PROPOSED DISH Wireless L.L.C. 10 AMP DISTRIBUTION BREAKER

PROPOSED DISH Wireless L.L.C. 12 AWG WIRE

PROPOSED DISH Wireless L.L.C. 1-1/2" POWER FROM CABINET

DISH Wireless L.L.C. INSTALLS 1-1/2" CONDUITS FOR POWER AND FIBER TO CABINET

DISH Wireless L.L.C. FIBER DISTRIBUTION PANEL

PROPOSED DISH Wireless L.L.C. TELCO FIBER ENCLOSURE

DISH Wireless L.L.C. FIBER JUMPER TO CABINET WILL NEED TO BE TERMINATED BY FIBER PROVIDER ON OTHER SIDE OF BULKHEAD/LC TO LC CONNECTOR WHERE CIRCUIT IS TERMINATED.

PROPOSED FIBER PROVIDER FIBER LATERAL FROM RIGHT OF WAY TO STREET, TERMINATED TO FDP

PROPOSED DISH Wireless L.L.C. 1-1/2" FIBER TO CABINET

PROPOSED DISH Wireless L.L.C. 2" CONDUIT FROM COMMERCIAL FIBER VAULT

EXPANSION JOINT DETAIL

NO SCALE

1

PROPOSED DISH Wireless L.L.C. UNISTRUT

PROPOSED FIBER PROVIDER 1-1/4" FLEX CONDUITS

FIBER PROVIDER TO TERMINATE POWER TO FIBER PROVIDER NID

PROPOSED DISH Wireless L.L.C. 12 AWG WIRE (6' TAIL)

PROPOSED DISH Wireless L.L.C. 10 AMP DISTRIBUTION BREAKER

PROPOSED DISH Wireless L.L.C. 12 AWG WIRE

PROPOSED DISH Wireless L.L.C. 1-1/2" POWER FROM CABINET

NOTE: FIBER PROVIDER WILL NEED TO PROVIDE AN ADDITIONAL 5FT UNISTRUT, 2 U-BOLTS WITH 4 NUTS, IN THE EVENT THE BRACKET SPACING DOESN'T LINE UP WITH CURRENT SPACING BELOW

IN IN OUT

FIBER PROVIDER TO PUNCH TOP OF TELCO BOX OF NID ENCLOSURE AND INSTALL 1-1/4" LIQUID TIGHT CONNECTORS, UL LISTED, NYLON MATERIAL, WITH O-RING GASKET

FIBER PROVIDER TO INSTALL 1-1/4" FLEX CONDUITS BETWEEN FDP TELCO BOX & NID

PROPOSED DISH Wireless L.L.C. TELCO FIBER ENCLOSURE

PROPOSED DISH Wireless L.L.C. 1-1/2" FIBER TO CABINET

PROPOSED DISH Wireless L.L.C. 2" CONDUIT FROM COMMERCIAL FIBER VAULT

TYPICAL UNDERGROUND TRENCH DETAIL

NO SCALE

2

DARK TELCO BOX – INTERIOR WIRING LAYOUT

NO SCALE

3

LIT TELCO BOX – INTERIOR WIRING LAYOUT (OPTIONAL)

NO SCALE

4

NOT USED

NO SCALE

5

NOT USED

NO SCALE

6

NOT USED

NO SCALE

7

NOT USED

NO SCALE

8

NOT USED

NO SCALE

9

dish

wireless.

5701 SOUTH SANTA FE DRIVE
LITTLETON, CO 80120

B+T GRP

MTS TELECOM, L.L.C.
1717 S. BOULDER,
SUITE 300
TULSA, OK 74119
PH: (918) 587-4630
btw@btgrp.com

STATE OF
NEW JERSEY

PETER D. SMITH
GE056608

PROFESSIONAL ENGINEER

MTS TELECOM, L.L.C.
COA# 24GA28343300
EXPIRES 8/31/22

IT IS A VIOLATION OF LAW FOR ANY PERSON, UNLESS THEY ARE ACTING UNDER THE DIRECTION OF A LICENSED PROFESSIONAL ENGINEER, TO ALTER THIS DOCUMENT.

DRAWN BY: CHECKED BY: APPROVED BY:

JJR/ANP JJR/LR PDS

RFDS REV #: 3

CONSTRUCTION DOCUMENTS

REV

DATE

DESCRIPTION

A

6/15/21

ISSUED FOR REVIEW

0

10/12/21

ISSUED FOR CONSTRUCTION

1

12/20/21

ISSUED FOR CONSTRUCTION

2

5/16/22

ISSUED FOR CONSTRUCTION

3

5/26/22

ISSUED FOR CONSTRUCTION

A&E PROJECT NUMBER

109333.005.01

DISH Wireless L.L.C.
PROJECT INFORMATION

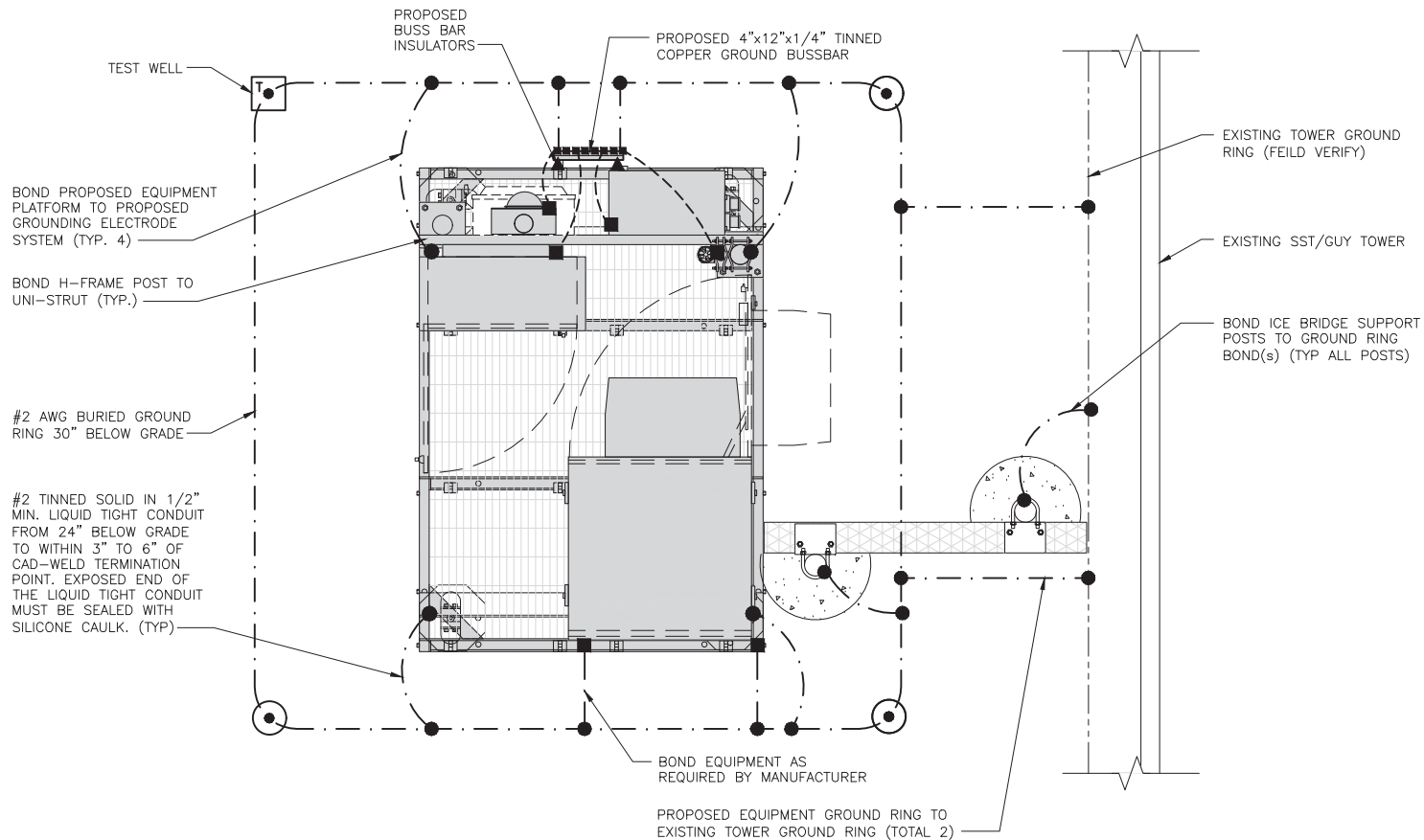
NJJER01580A
2 GOWIN STREET
SAYREVILLE, NJ 08872
BLOCK 333.01 LOT 7

SHEET TITLE

ELECTRICAL DETAILS

SHEET NUMBER

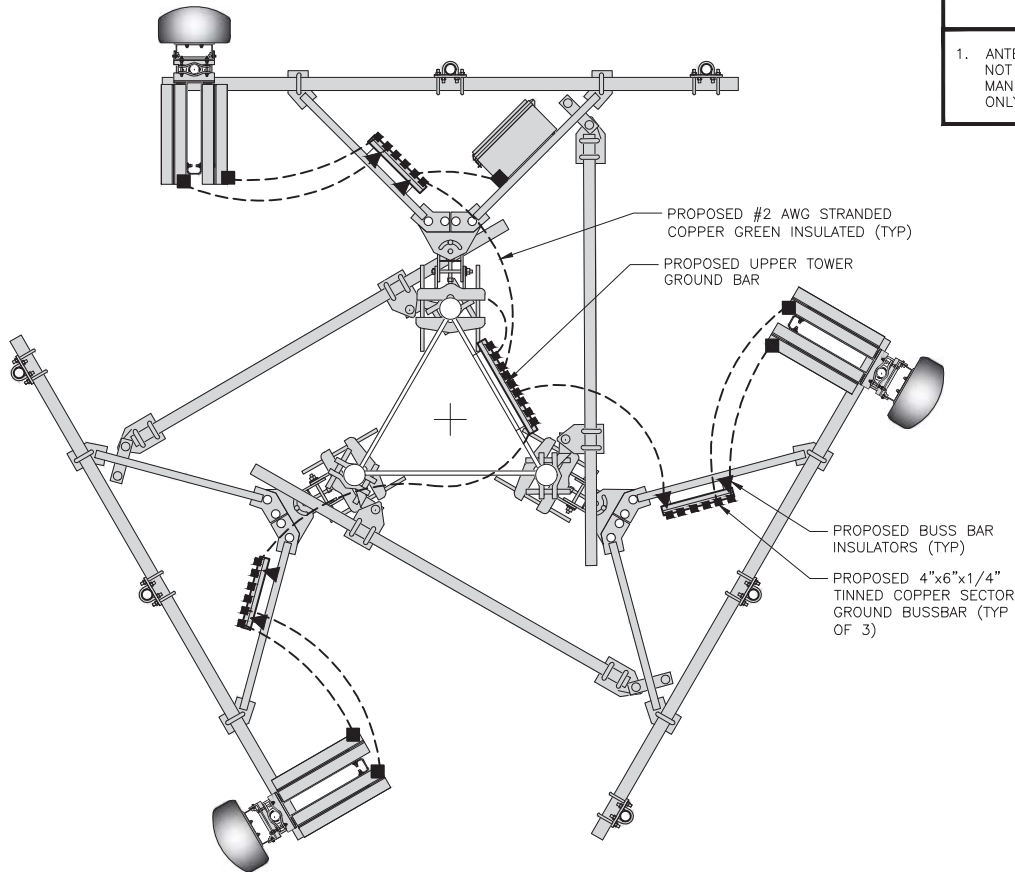
E-2



TYPICAL EQUIPMENT GROUNDING PLAN

NO SCALE

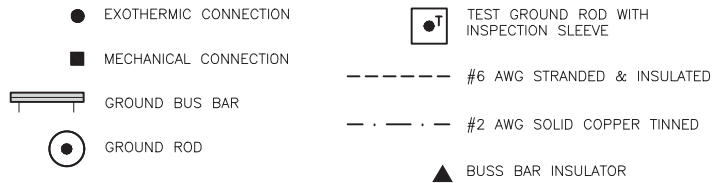
1



TYPICAL ANTENNA GROUNDING PLAN

NO SCALE

2



GROUNDING LEGEND

- GROUNDING IS SHOWN DIAGRAMMATICALLY ONLY.
- CONTRACTOR SHALL GROUND ALL EQUIPMENT AS A COMPLETE SYSTEM. GROUNDING SHALL BE IN COMPLIANCE WITH NEC SECTION 250 AND DISH Wireless L.L.C. GROUNDING AND BONDING REQUIREMENTS AND MANUFACTURER'S SPECIFICATIONS.
- ALL GROUND CONDUCTORS SHALL BE COPPER; NO ALUMINUM CONDUCTORS SHALL BE USED.

GROUNDING KEY NOTES

- (A) **EXTERIOR GROUND RING:** #2 AWG SOLID COPPER, BURIED AT A DEPTH OF AT LEAST 30 INCHES BELOW GRADE, OR 6 INCHES BELOW THE FROST LINE AND APPROXIMATELY 24 INCHES FROM THE EXTERIOR WALL OR FOOTING.
- (B) **TOWER GROUND RING:** THE GROUND RING SYSTEM SHALL BE INSTALLED AROUND AN ANTENNA TOWER'S LEGS, AND/OR GUY ANCHORS. WHERE SEPARATE SYSTEMS HAVE BEEN PROVIDED FOR THE TOWER AND THE BUILDING, AT LEAST TWO BONDS SHALL BE MADE BETWEEN THE TOWER RING GROUND SYSTEM AND THE BUILDING RING GROUND SYSTEM USING MINIMUM #2 AWG SOLID COPPER CONDUCTORS.
- (C) **INTERIOR GROUND RING:** #2 AWG STRANDED GREEN INSULATED COPPER CONDUCTOR EXTENDED AROUND THE PERIMETER OF THE EQUIPMENT AREA. ALL NON-TELECOMMUNICATIONS RELATED METALLIC OBJECTS FOUND WITHIN A SITE SHALL BE GROUNDED TO THE INTERIOR GROUND RING WITH #6 AWG STRANDED GREEN INSULATED CONDUCTOR.
- (D) **BOND TO INTERIOR GROUND RING:** #2 AWG SOLID TINNED COPPER WIRE PRIMARY BONDS SHALL BE PROVIDED AT LEAST AT FOUR POINTS ON THE INTERIOR GROUND RING, LOCATED AT THE CORNERS OF THE BUILDING.
- (E) **GROUND ROD:** UL LISTED COPPER CLAD STEEL. MINIMUM 1/2" DIAMETER BY EIGHT FEET LONG. GROUND RODS SHALL BE INSTALLED WITH INSPECTION SLEEVES. GROUND RODS SHALL BE DRIVEN TO THE DEPTH OF GROUND RING CONDUCTOR.
- (F) **CELL REFERENCE GROUND BAR:** POINT OF GROUND REFERENCE FOR ALL COMMUNICATIONS EQUIPMENT FRAMES. ALL BONDS ARE MADE WITH #2 AWG UNLESS NOTED OTHERWISE STRANDED GREEN INSULATED COPPER CONDUCTORS. BOND TO GROUND RING WITH (2) #2 SOLID TINNED COPPER CONDUCTORS.
- (G) **HATCH PLATE GROUND BAR:** BOND TO THE INTERIOR GROUND RING WITH TWO #2 AWG STRANDED GREEN INSULATED COPPER CONDUCTORS. WHEN A HATCH-PLATE AND A CELL REFERENCE GROUND BAR ARE BOTH PRESENT, THE CRGB MUST BE CONNECTED TO THE HATCH-PLATE AND TO THE INTERIOR GROUND RING USING (2) TWO #2 AWG STRANDED GREEN INSULATED COPPER CONDUCTORS EACH.
- (H) **EXTERIOR CABLE ENTRY PORT GROUND BARS:** LOCATED AT THE ENTRANCE TO THE CELL SITE BUILDING. BOND TO GROUND RING WITH A #2 AWG SOLID TINNED COPPER CONDUCTORS WITH AN EXOTHERMIC WELD AND INSPECTION SLEEVE.
- (I) **TELCO GROUND BAR:** BOND TO BOTH CELL REFERENCE GROUND BAR OR EXTERIOR GROUND RING.
- (J) **FRAME BONDING:** THE BONDING POINT FOR TELECOM EQUIPMENT FRAMES SHALL BE THE GROUND BUS THAT IS NOT ISOLATED FROM THE EQUIPMENTS METAL FRAMEWORK.
- (K) **INTERIOR UNIT BONDS:** METAL FRAMES, CABINETS AND INDIVIDUAL METALLIC UNITS LOCATED WITH THE AREA OF THE INTERIOR GROUND RING REQUIRE A #6 AWG STRANDED GREEN INSULATED COPPER BOND TO THE INTERIOR GROUND RING.
- (L) **FENCE AND GATE GROUNDING:** METAL FENCES WITHIN 7 FEET OF THE EXTERIOR GROUND RING OR OBJECTS BONDED TO THE EXTERIOR GROUND RING SHALL BE BONDED TO THE GROUND RING WITH A #2 AWG SOLID TINNED COPPER CONDUCTOR AT AN INTERVAL NOT EXCEEDING 25 FEET. BONDS SHALL BE MADE AT EACH GATE POST AND ACROSS GATE OPENINGS.
- (M) **EXTERIOR UNIT BONDS:** METALLIC OBJECTS, EXTERNAL TO OR MOUNTED TO THE BUILDING, SHALL BE BONDED TO THE EXTERIOR GROUND RING. USING #2 TINNED SOLID COPPER WIRE
- (N) **ICE BRIDGE SUPPORTS:** EACH ICE BRIDGE LEG SHALL BE BONDED TO THE GROUND RING WITH #2 AWG BARE TINNED COPPER CONDUCTOR. PROVIDE EXOTHERMIC WELDS AT BOTH THE ICE BRIDGE LEG AND BURIED GROUND RING.
- (O) DURING ALL DC POWER SYSTEM CHANGES INCLUDING DC SYSTEM CHANGE OUTS, RECTIFIER REPLACEMENTS OR ADDITIONS, BREAKER DISTRIBUTION CHANGES, BATTERY ADDITIONS, BATTERY REPLACEMENTS AND INSTALLATIONS OR CHANGES TO DC CONVERTER SYSTEMS IT SHALL BE REQUIRED THAT SERVICE CONTRACTORS VERIFY ALL DC POWER SYSTEMS ARE EQUIPPED WITH A MASTER DC SYSTEM RETURN GROUND CONDUCTOR FROM THE DC POWER SYSTEM COMMON RETURN BUS DIRECTLY CONNECTED TO THE CELL SITE REFERENCE GROUND BAR
- (P) TOWER TOP COLLECTOR BUSS BAR IS TO BE MECHANICALLY BONDED TO TOWER STEEL.

REFER TO DISH Wireless L.L.C. GROUNDING NOTES.

GROUNDING KEY NOTES

NO SCALE

3

dish
wireless.

5701 SOUTH SANTA FE DRIVE
LITTLETON, CO 80120



MTS TELECOM, L.L.C.
COA# 24GA28343300
EXPIRES 8/31/22

IT IS A VIOLATION OF LAW FOR ANY PERSON, UNLESS THEY ARE ACTING UNDER THE DIRECTION OF A LICENSED PROFESSIONAL ENGINEER, TO ALTER THIS DOCUMENT.

DRAWN BY: CHECKED BY: APPROVED BY:

JJR/ANP JJR/LR PDS

RFDS REV #: 3

CONSTRUCTION DOCUMENTS

SUBMITTALS		
REV	DATE	DESCRIPTION
A	6/15/21	ISSUED FOR REVIEW
0	10/12/21	ISSUED FOR CONSTRUCTION
1	12/20/21	ISSUED FOR CONSTRUCTION
2	5/16/22	ISSUED FOR CONSTRUCTION
3	5/26/22	ISSUED FOR CONSTRUCTION

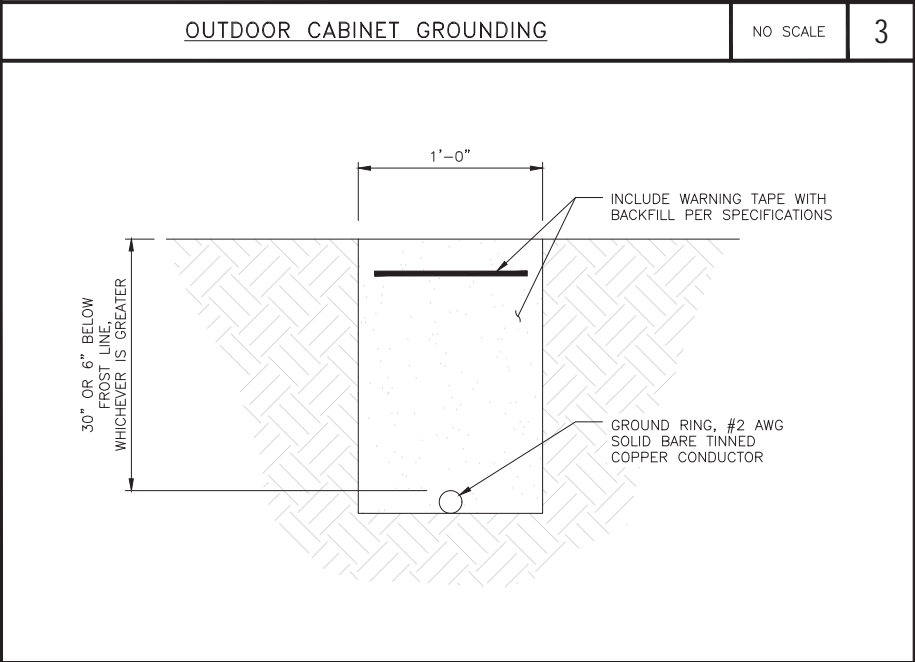
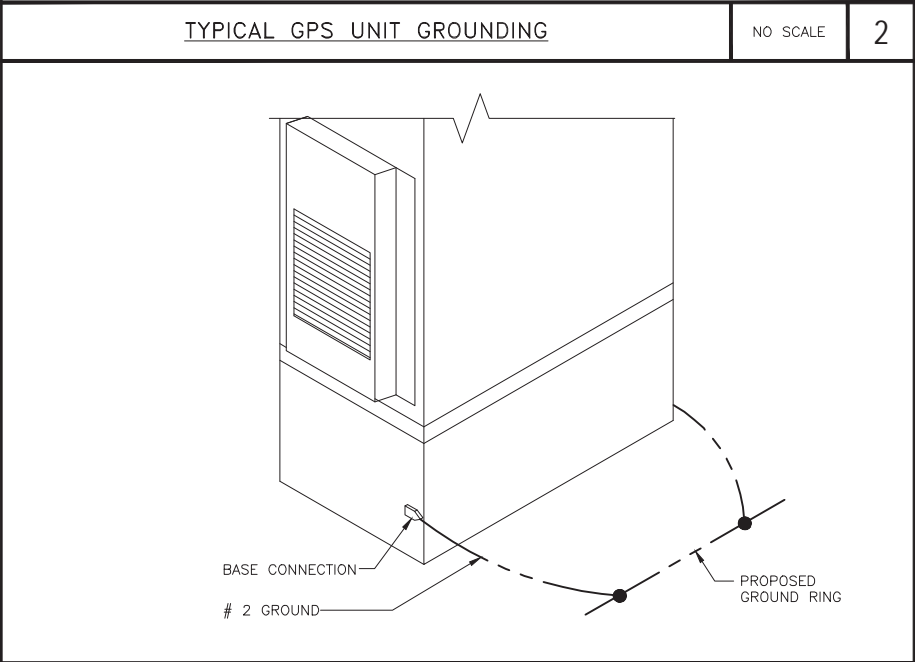
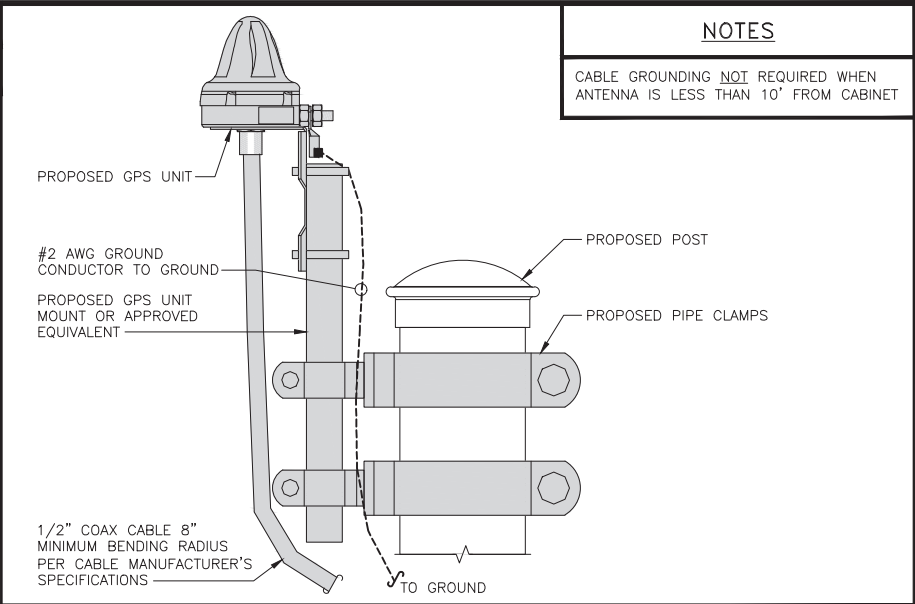
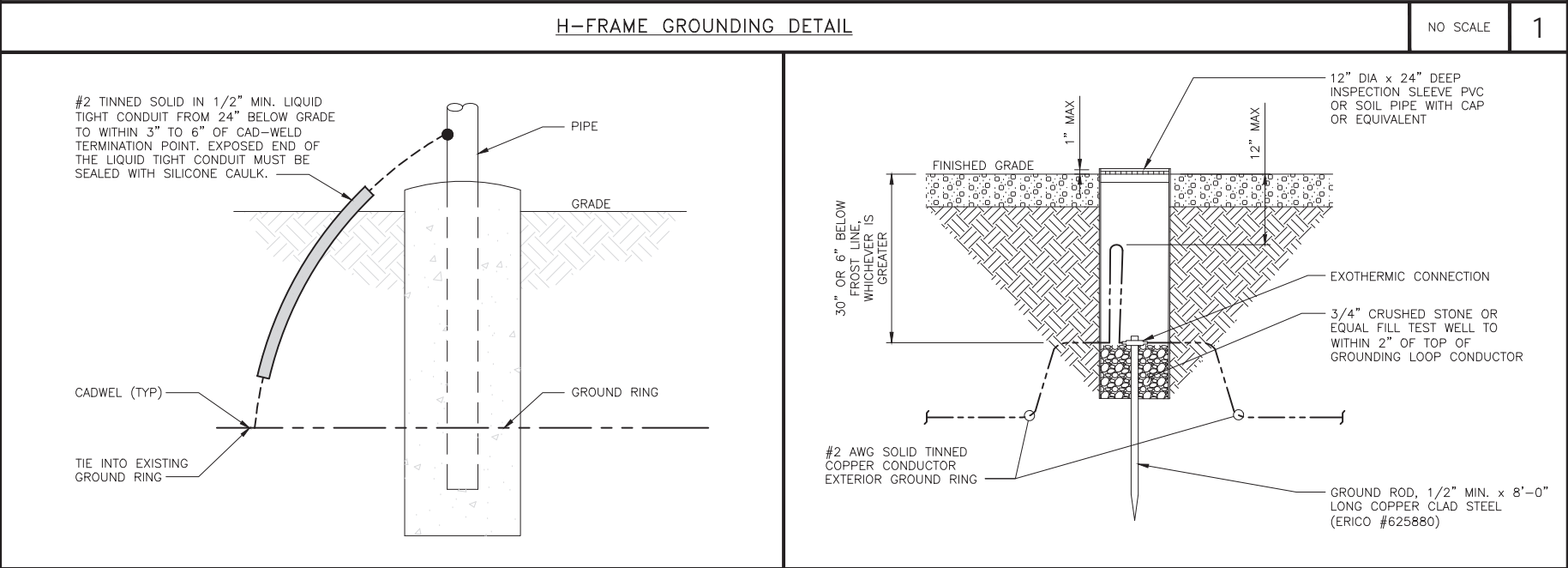
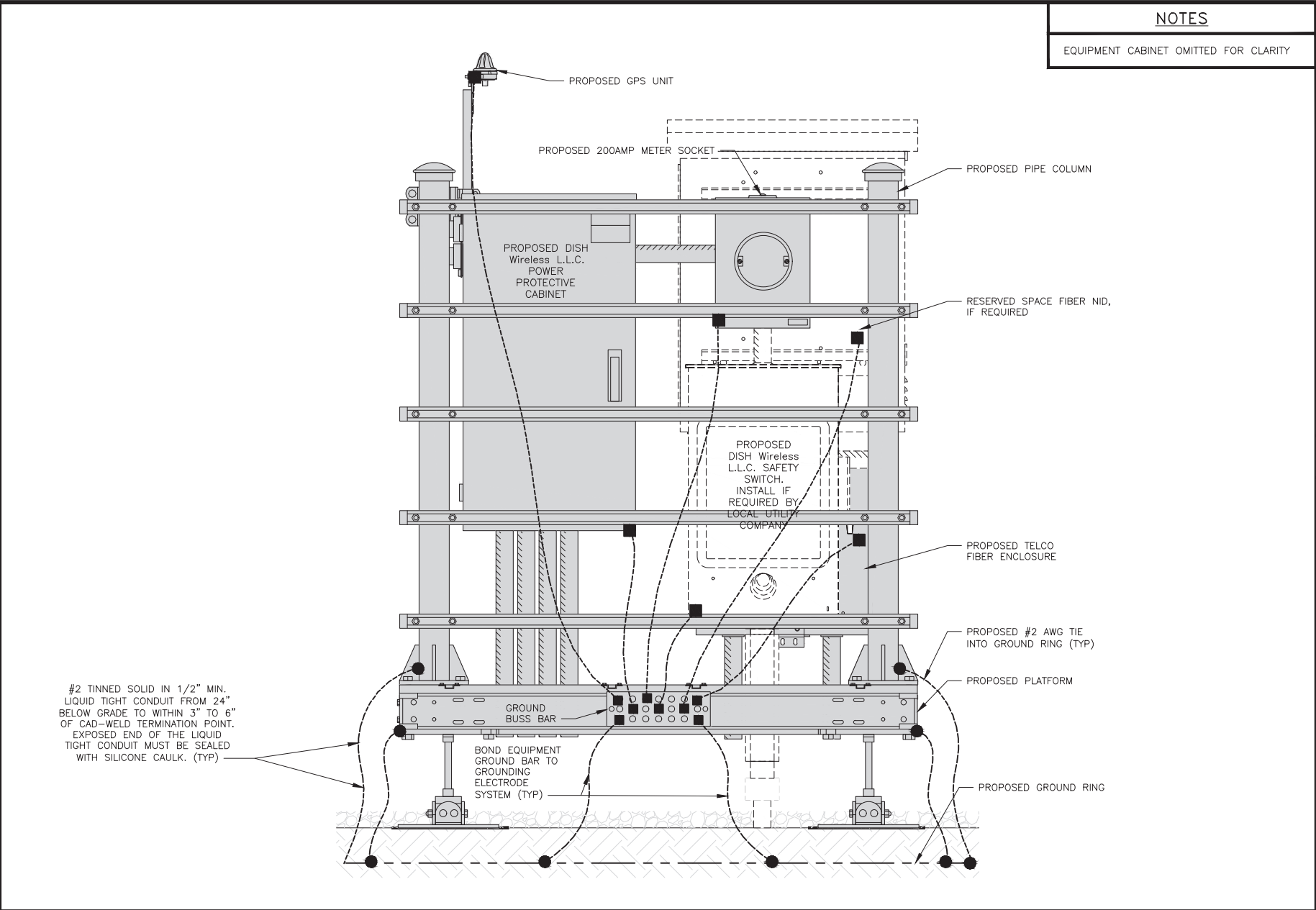
A&E PROJECT NUMBER
109333.005.01

DISH Wireless L.L.C.
PROJECT INFORMATION
NJJER01580A
2 GOWIN STREET
SAYREVILLE, NJ 08872
BLOCK 333.01 LOT 7

SHEET TITLE
GROUNDING PLANS
AND NOTES

SHEET NUMBER

G-1



dish
wireless.

5701 SOUTH SANTA FE DRIVE
LITTLETON, CO 80120

B+T GRP
MTS TELECOM, L.L.C.
1717 S. BOULDER,
SUITE 300
TULSA, OK 74119
PH: (918) 587-4630
btwo@bgrp.com



MTS TELECOM, L.L.C.
COA# 24CA28343300
EXPIRES 8/31/22

IT IS A VIOLATION OF LAW FOR ANY PERSON, UNLESS THEY ARE ACTING UNDER THE DIRECTION OF A LICENSED PROFESSIONAL ENGINEER, TO ALTER THIS DOCUMENT.

DRAWN BY: CHECKED BY: APPROVED BY:

JJR/ANP JJR/LR PDS

RFDS REV #: 3

CONSTRUCTION DOCUMENTS

SUBMITTALS		
REV	DATE	DESCRIPTION
A	6/15/21	ISSUED FOR REVIEW
0	10/12/21	ISSUED FOR CONSTRUCTION
1	12/20/21	ISSUED FOR CONSTRUCTION
2	5/16/22	ISSUED FOR CONSTRUCTION
3	5/26/22	ISSUED FOR CONSTRUCTION

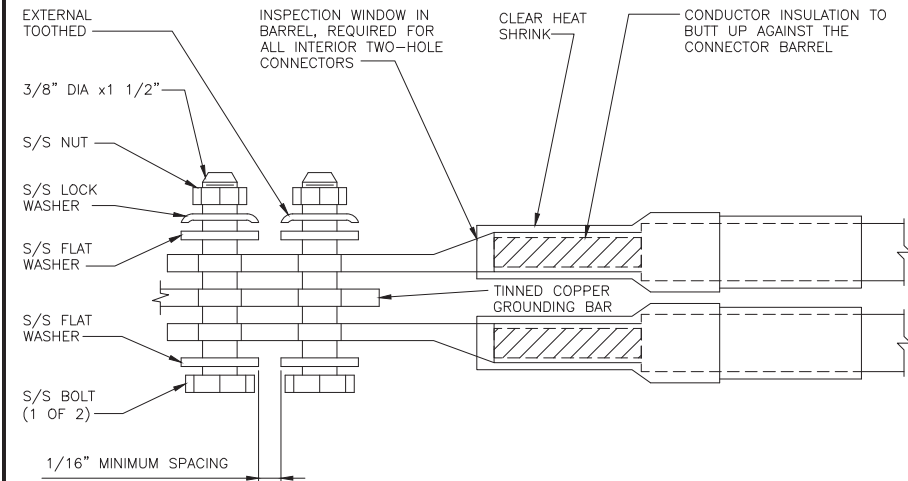
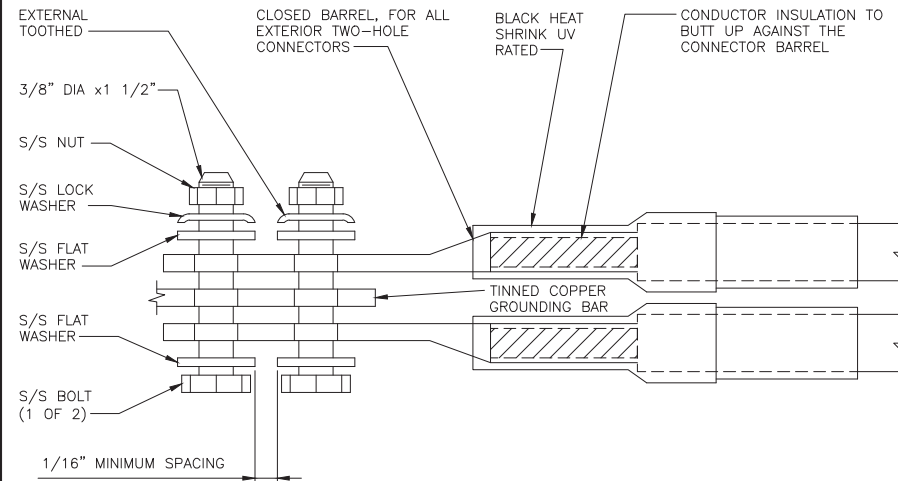
A&E PROJECT NUMBER
109333.005.01

DISH Wireless L.L.C.
PROJECT INFORMATION
NJJER01580A
2 GOWIN STREET
SAYREVILLE, NJ 08872
BLOCK 333.01 LOT 7

SHEET TITLE
GROUNDING DETAILS

SHEET NUMBER
G-2

1. EXOTHERMIC WELD (2) TWO, #2 AWG BARE TINNED SOLID COPPER CONDUCTORS TO GROUND BAR. ROUTE CONDUCTORS TO BURIED GROUND RING AND PROVIDE PARALLEL EXOTHERMIC WELD.
2. ALL EXTERIOR GROUNDING HARDWARE SHALL BE STAINLESS STEEL 3/8" DIAMETER OR LARGER. ALL HARDWARE 18-8 STAINLESS STEEL INCLUDING LOCK WASHERS, COAT ALL SURFACES WITH AN ANTI-OXIDANT COMPOUND BEFORE MATING.
3. FOR GROUND BOND TO STEEL ONLY: COAT ALL SURFACES WITH AN ANTI-OXIDANT COMPOUND BEFORE MATING.
4. DO NOT INSTALL CABLE GROUNDING KIT AT A BEND AND ALWAYS DIRECT GROUND CONDUCTOR DOWN TO GROUNDING BUS.
5. NUT & WASHER SHALL BE PLACED ON THE FRONT SIDE OF THE GROUND BAR AND BOLTED ON THE BACK SIDE.
6. ALL GROUNDING PARTS AND EQUIPMENT TO BE SUPPLIED AND INSTALLED BY CONTRACTOR.
7. THE CONTRACTOR SHALL BE RESPONSIBLE FOR INSTALLING ADDITIONAL GROUND BAR AS REQUIRED.
8. ENSURE THE WIRE INSULATION TERMINATION IS WITHIN 1/8" OF THE BARREL (NO SHINERS).



TYPICAL GROUNDING NOTES

NO SCALE

1

TYPICAL EXTERIOR TWO HOLE LUG

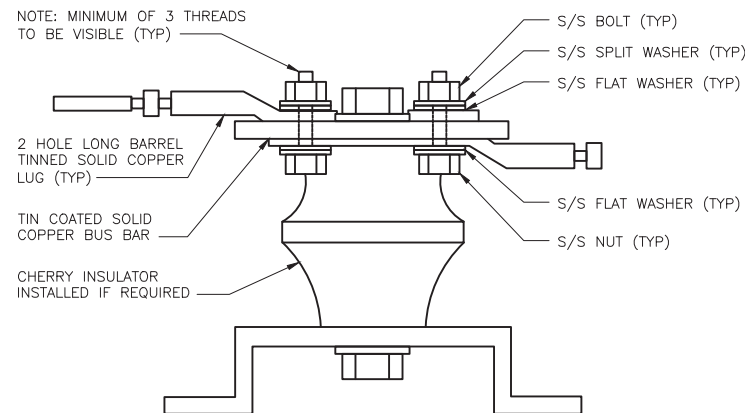
NO SCALE

2

TYPICAL INTERIOR TWO HOLE LUG

NO SCALE

3



LUG DETAIL

NO SCALE

4

NOT USED

NO SCALE

5

NOT USED

NO SCALE

6



5701 SOUTH SANTA FE DRIVE
LITTLETON, CO 80120



MTS TELECOM, L.L.C.
COA# 24GA28343300
EXPIRES 8/31/22

IT IS A VIOLATION OF LAW FOR ANY PERSON,
UNLESS THEY ARE ACTING UNDER THE DIRECTION
OF A LICENSED PROFESSIONAL ENGINEER,
TO ALTER THIS DOCUMENT.

DRAWN BY:	CHECKED BY:	APPROVED BY:
-----------	-------------	--------------

JJR/ANP	JJR/LR	PDS
---------	--------	-----

RFDS REV #: 3

CONSTRUCTION
DOCUMENTS

SUBMITTALS		
REV	DATE	DESCRIPTION
A	6/15/21	ISSUED FOR REVIEW
0	10/12/21	ISSUED FOR CONSTRUCTION
1	12/20/21	ISSUED FOR CONSTRUCTION
2	5/16/22	ISSUED FOR CONSTRUCTION
3	5/26/22	ISSUED FOR CONSTRUCTION

A&E PROJECT NUMBER
109333.005.01

DISH Wireless L.L.C.
PROJECT INFORMATION
NJJER01580A
2 GOWIN STREET
SAYREVILLE, NJ 08872
BLOCK 333.01 LOT 7

SHEET TITLE

GROUNDING DETAILS

SHEET NUMBER

G-3

NOT USED

NO SCALE

7

NOT USED

NO SCALE

8

NOT USED

NO SCALE

9

RF JUMPER COLOR CODING				3/4" TAPE WIDTHS WITH 3/4" SPACING									
LOW-BAND RRH – (600MHz N71 BASEBAND) + (850MHz N26 BAND) + (700MHz N29 BAND) – OPTIONAL PER MARKET	ALPHA RRH				BETA RRH				GAMMA RRH				
	PORT 1 + SLANT	PORT 2 – SLANT	PORT 3 + SLANT	PORT 4 – SLANT	PORT 1 + SLANT	PORT 2 – SLANT	PORT 3 + SLANT	PORT 4 – SLANT	PORT 1 + SLANT	PORT 2 – SLANT	PORT 3 + SLANT	PORT 4 – SLANT	
	RED	RED	RED	RED	BLUE	BLUE	BLUE	BLUE	GREEN	GREEN	GREEN	GREEN	
	ORANGE	ORANGE	RED	RED	ORANGE	ORANGE	BLUE	BLUE	ORANGE	ORANGE	GREEN	GREEN	
		WHITE (–) PORT	ORANGE	ORANGE		WHITE (–) PORT	ORANGE	ORANGE		WHITE (–) PORT	ORANGE	ORANGE	
ADD FREQUENCY COLOR TO SECTOR BAND (CBRS WILL USE YELLOW BANDS)				WHITE (–) PORT				WHITE (–) PORT				WHITE (–) PORT	
	RED	RED	RED	RED	BLUE	BLUE	BLUE	BLUE	GREEN	GREEN	GREEN	GREEN	
	PURPLE	PURPLE	RED	RED	PURPLE	PURPLE	BLUE	BLUE	PURPLE	PURPLE	GREEN	GREEN	
		WHITE (–) PORT	PURPLE	PURPLE		WHITE (–) PORT	PURPLE	PURPLE		WHITE (–) PORT	PURPLE	PURPLE	
MID-BAND RRH – (AWS BANDS N66+N70)				WHITE (–) PORT				WHITE (–) PORT				WHITE (–) PORT	
HYBRID/DISCREET CABLES													
INCLUDE SECTOR BANDS BEING SUPPORTED ALONG WITH FREQUENCY BANDS	EXAMPLE 1		EXAMPLE 2		EXAMPLE 3								
	RED		RED		RED								
	BLUE		BLUE										
	GREEN		GREEN		ORANGE								
	ORANGE		YELLOW		PURPLE								
EXAMPLE 1 – HYBRID, OR DISCREET, SUPPORTS ALL SECTORS, BOTH LOW-BANDS AND MID-BANDS	PURPLE												
EXAMPLE 2 – HYBRID, OR DISCREET, SUPPORTS CBRS ONLY, ALL SECTORS													
FIBER JUMPERS TO RRHs													
LOW-BAND RRH FIBER CABLES HAVE SECTOR STRIPE ONLY	LOW BAND RRH		HIGH BAND RRH		LOW BAND RRH		HIGH BAND RRH		LOW BAND RRH		HIGH BAND RRH		
	RED		RED		BLUE		BLUE		GREEN		GREEN		
			PURPLE				PURPLE				PURPLE		
POWER CABLES TO RRHs													
LOW-BAND RRH POWER CABLES HAVE SECTOR STRIPE ONLY	LOW BAND RRH		HIGH BAND RRH		LOW BAND RRH		HIGH BAND RRH		LOW BAND RRH		HIGH BAND RRH		
	RED		RED		BLUE		BLUE		GREEN		GREEN		
			PURPLE				PURPLE				PURPLE		
RET MOTORS AT ANTENNAS													
	ANTENNA 1 LOW BAND/ "IN"		ANTENNA 1 HIGH BAND/ "IN"		ANTENNA 1 LOW BAND/ "IN"		ANTENNA 1 HIGH BAND/ "IN"		ANTENNA 1 LOW BAND/ "IN"		ANTENNA 1 HIGH BAND/ "IN"		
	RED		RED		BLUE		BLUE		GREEN		GREEN		
			PURPLE				PURPLE				PURPLE		
MICROWAVE RADIO LINKS													
LINKS WILL HAVE A 1.5–2 INCH WHITE WRAP WITH THE AZIMUTH COLOR OVERLAPPING IN THE MIDDLE. ADD ADDITIONAL SECTOR COLOR BANDS FOR EACH ADDITIONAL MW RADIO.	FORWARD AZIMUTH OF 0–120 DEGREES				FORWARD AZIMUTH OF 120–240 DEGREES				FORWARD AZIMUTH OF 240–360 DEGREES				
	PRIMARY		SECONDARY		PRIMARY		SECONDARY		PRIMARY		SECONDARY		
	WHITE		WHITE		WHITE		WHITE		WHITE		WHITE		
	RED		RED		BLUE		BLUE		GREEN		GREEN		
	WHITE		WHITE		WHITE		WHITE		WHITE		WHITE		
MICROWAVE CABLES WILL REQUIRE P-TOUCH LABELS INSIDE THE CABINET TO IDENTIFY THE LOCAL AND REMOTE SITE ID'S			RED				BLUE				GREEN		
			WHITE				WHITE				WHITE		
			RED				BLUE				GREEN		
			WHITE				WHITE				WHITE		

RF CABLE COLOR CODES

NO SCALE

1

NOT USED

NO SCALE

4

LOW BANDS (N71+N26)
OPTIONAL – (N29)

ORANGE

AWS
(N66+N70+H–BLOCK)

PURPLE

CBRS TECH
(3 GHz)

YELLOW

NEGATIVE SLANT PORT
ON ANT/RRH

WHITE

ALPHA SECTOR

RED

BETA SECTOR

BLUE

GAMMA SECTOR

GREEN

COLOR IDENTIFIER

NO SCALE

2

NOT USED

NO SCALE

3

dish
wireless.

5701 SOUTH SANTA FE DRIVE
LITTLETON, CO 80120

B+T GRP
MTS TELECOM, L.L.C.
1717 S. BOULDER,
SUITE 300
TULSA, OK 74119
PH: (918) 587-4630
btw@bgrp.com



MTS TELECOM, L.L.C.
COA# 24CA28343300
EXPIRES 8/31/22

IT IS A VIOLATION OF LAW FOR ANY PERSON,
UNLESS THEY ARE ACTING UNDER THE DIRECTION
OF A LICENSED PROFESSIONAL ENGINEER,
TO ALTER THIS DOCUMENT.

DRAWN BY: CHECKED BY: APPROVED BY:

JJR/ANP

JJR/LR

PDS

RFDS REV #: 3

CONSTRUCTION DOCUMENTS

SUBMITTALS		
REV	DATE	DESCRIPTION
A	6/15/21	ISSUED FOR REVIEW
0	10/12/21	ISSUED FOR CONSTRUCTION
1	12/20/21	ISSUED FOR CONSTRUCTION
2	5/16/22	ISSUED FOR CONSTRUCTION
3	5/26/22	ISSUED FOR CONSTRUCTION

A&E PROJECT NUMBER

109333.005.01

DISH Wireless L.L.C.
PROJECT INFORMATION
NJJER01580A
2 GOWIN STREET
SAYREVILLE, NJ 08872
BLOCK 333.01 LOT 7

SHEET TITLE
RF
CABLE COLOR CODE

SHEET NUMBER

RF-1

EXOTHERMIC CONNECTION	
MECHANICAL CONNECTION	
BUSS BAR INSULATOR	
CHEMICAL ELECTROLYTIC GROUNDING SYSTEM	
TEST CHEMICAL ELECTROLYTIC GROUNDING SYSTEM	
EXOTHERMIC WITH INSPECTION SLEEVE	
GROUNDING BAR	
GROUND ROD	
TEST GROUND ROD WITH INSPECTION SLEEVE	
SINGLE POLE SWITCH	
DUPLEX RECEPTACLE	
DUPLEX GFCI RECEPTACLE	
FLUORESCENT LIGHTING FIXTURE (2) TWO LAMPS 48-T8	
SMOKE DETECTION (DC)	
EMERGENCY LIGHTING (DC)	
SECURITY LIGHT W/PHOTOCELL LITHONIA ALXW LED-1-25A400/51K-SR4-120-PE-DDBTXD	
CHAIN LINK FENCE	
WOOD/WROUGHT IRON FENCE	
WALL STRUCTURE	
LEASE AREA	
PROPERTY LINE (PL)	
SETBACKS	
ICE BRIDGE	
CABLE TRAY	
WATER LINE	
UNDERGROUND POWER	
UNDERGROUND TELCO	
OVERHEAD POWER	
OVERHEAD TELCO	
UNDERGROUND TELCO/POWER	
ABOVE GROUND POWER	
ABOVE GROUND TELCO	
ABOVE GROUND TELCO/POWER	
WORKPOINT	
SECTION REFERENCE	
DETAIL REFERENCE	

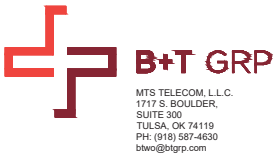
LEGEND

AB	ANCHOR BOLT	IN	INCH
ABV	ABOVE	INT	INTERIOR
AC	ALTERNATING CURRENT	LB(S)	POUND(S)
ADDL	ADDITIONAL	LF	LINEAR FEET
AFF	ABOVE FINISHED FLOOR	LTE	LONG TERM EVOLUTION
AFG	ABOVE FINISHED GRADE	MAS	MASONRY
AGL	ABOVE GROUND LEVEL	MAX	MAXIMUM
AIC	AMPERAGE INTERRUPTION CAPACITY	MB	MACHINE BOLT
ALUM	ALUMINUM	MECH	MECHANICAL
ALT	ALTERNATE	MFR	MANUFACTURER
ANT	ANTENNA	MGB	MASTER GROUND BAR
APPROX	APPROXIMATE	MIN	MINIMUM
ARCH	ARCHITECTURAL	MISC	MISCELLANEOUS
ATS	AUTOMATIC TRANSFER SWITCH	MTL	METAL
AWG	AMERICAN WIRE GAUGE	MTS	MANUAL TRANSFER SWITCH
BATT	BATTERY	MW	MICROWAVE
BLDG	BUILDING	NEC	NATIONAL ELECTRIC CODE
BLK	BLOCK	NM	NEWTON METERS
BLKG	BLOCKING	NO.	NUMBER
BM	BEAM	#	NUMBER
BTC	BARE TINNED COPPER CONDUCTOR	NTS	NOT TO SCALE
BOF	BOTTOM OF FOOTING	OC	ON-CENTER
CAB	CABINET	OSHA	OCCUPATIONAL SAFETY AND HEALTH ADMINISTRATION
CANT	CANTILEVERED	OPNG	OPENING
CHG	CHARGING	P/C	PRECAST CONCRETE
CLG	CEILING	PCS	PERSONAL COMMUNICATION SERVICES
CLR	CLEAR	PCU	PRIMARY CONTROL UNIT
COL	COLUMN	PRC	PRIMARY RADIO CABINET
COMM	COMMON	PP	POLARIZING PRESERVING
CONC	CONCRETE	PSF	POUNDS PER SQUARE FOOT
CONSTR	CONSTRUCTION	PSI	POUNDS PER SQUARE INCH
DBL	DOUBLE	PT	PRESSURE TREATED
DC	DIRECT CURRENT	PWR	POWER CABINET
DEPT	DEPARTMENT	QTY	QUANTITY
DF	DOUGLAS FIR	RAD	RADIUS
DIA	DIAMETER	RECT	RECTIFIER
DIAG	DIAGONAL	REF	REFERENCE
DIM	DIMENSION	REINF	REINFORCEMENT
DWG	DRAWING	REQ'D	REQUIRED
DWL	DOWEL	RET	REMOTE ELECTRIC TILT
EA	EACH	RF	RADIO FREQUENCY
EC	ELECTRICAL CONDUCTOR	RMC	RIGID METALLIC CONDUIT
EL	ELEVATION	RRH	REMOTE RADIO HEAD
ELEC	ELECTRICAL	RRU	REMOTE RADIO UNIT
EMT	ELECTRICAL METALLIC TUBING	RWY	RACEWAY
ENG	ENGINEER	SCH	SCHEDULE
EQ	EQUAL	SHT	SHEET
EXP	EXPANSION	SIAD	SMART INTEGRATED ACCESS DEVICE
EXT	EXTERIOR	SIM	SIMILAR
EW	EACH WAY	SPEC	SPECIFICATION
FAB	FABRICATION	SQ	SQUARE
FF	FINISH FLOOR	SS	STAINLESS STEEL
FG	FINISH GRADE	STD	STANDARD
FIF	FACILITY INTERFACE FRAME	STL	STEEL
FIN	FINISH(ED)	TEMP	TEMPORARY
FLR	FLOOR	THK	THICKNESS
FDN	FOUNDATION	TMA	TOWER MOUNTED AMPLIFIER
FOC	FACE OF CONCRETE	TN	TOE NAIL
FOM	FACE OF MASONRY	TOA	TOP OF ANTENNA
FOS	FACE OF STUD	TOC	TOP OF CURB
FOW	FACE OF WALL	TOF	TOP OF FOUNDATION
FS	FINISH SURFACE	TOP	TOP OF PLATE (PARAPET)
FT	FOOT	TOS	TOP OF STEEL
FTG	FOOTING	TOW	TOP OF WALL
GA	GAUGE	TVSS	TRANSIENT VOLTAGE SURGE SUPPRESSION
GEN	GENERATOR	TYP	TYPICAL
GFCI	GROUND FAULT CIRCUIT INTERRUPTER	UG	UNDERGROUND
GLB	GLUE LAMINATED BEAM	UL	UNDERWRITERS LABORATORY
GLV	GALVANIZED	UNO	UNLESS NOTED OTHERWISE
GPS	GLOBAL POSITIONING SYSTEM	UMTS	UNIVERSAL MOBILE TELECOMMUNICATIONS SYSTEM
GND	GROUND	UPS	UNITERRUPTIBLE POWER SYSTEM (DC POWER PLANT)
GSM	GLOBAL SYSTEM FOR MOBILE	VIF	VERIFIED IN FIELD
HDG	HOT DIPPED GALVANIZED	W	WIDE
HDR	HEADER	W/	WITH
HGR	HANGER	WD	WOOD
HVAC	HEAT/VENTILATION/AIR CONDITIONING	WP	WEATHERPROOF
HT	HEIGHT	WT	WEIGHT
IGR	INTERIOR GROUND RING		

ABBREVIATIONS



5701 SOUTH SANTA FE DRIVE
LITTLETON, CO 80120



MTS TELECOM, L.L.C.
COA# 24GA28343300
EXPIRES 8/31/22

IT IS A VIOLATION OF LAW FOR ANY PERSON,
UNLESS THEY ARE ACTING UNDER THE DIRECTION
OF A LICENSED PROFESSIONAL ENGINEER,
TO ALTER THIS DOCUMENT.

DRAWN BY: CHECKED BY: APPROVED BY:

JJR/ANP JJR/LR PDS

RFDS REV #: 3

CONSTRUCTION
DOCUMENTS

SUBMITTALS		
REV	DATE	DESCRIPTION
A	6/15/21	ISSUED FOR REVIEW
0	10/12/21	ISSUED FOR CONSTRUCTION
1	12/20/21	ISSUED FOR CONSTRUCTION
2	5/16/22	ISSUED FOR CONSTRUCTION
3	5/26/22	ISSUED FOR CONSTRUCTION

A&E PROJECT NUMBER

109333.005.01

DISH Wireless L.L.C.
PROJECT INFORMATION
NJJER01580A
2 GOWIN STREET
SAYREVILLE, NJ 08872
BLOCK 333.01 LOT 7

SHEET TITLE
LEGEND AND
ABBREVIATIONS

SHEET NUMBER

GN-1

1. NOTICE TO PROCEED - NO WORK SHALL COMMENCE PRIOR TO CONTRACTOR RECEIVING A WRITTEN NOTICE TO PROCEED (NTP) AND THE ISSUANCE OF A PURCHASE ORDER. PRIOR TO ACCESSING/ENTERING THE SITE YOU MUST CONTACT THE DISH Wireless L.L.C. AND TOWER OWNER NOC & THE DISH Wireless L.L.C. AND TOWER OWNER CONSTRUCTION MANAGER.

THE INTEGRITY OF THE SAFETY CMB AND ALL COMPONENTS OF THE CLIMBING FACILITY SHALL BE CONSIDERED DURING ALL STAGES OF DESIGN, INSTALLATION, AND INSPECTION. TOWER MODIFICATION, MOUNT REINFORCEMENTS, AND/OR EQUIPMENT INSTALLATIONS SHALL NOT COMPROMISE THE INTEGRITY OR FUNCTIONAL USE OF THE SAFETY CLIMB OR ANY COMPONENTS OF THE CLIMBING FACILITY ON THE STRUCTURE. THIS SHALL INCLUDE, BUT NOT BE LIMITED TO: PINCHING OF THE WIRE ROPE, BENDING OF THE WIRE ROPE FROM ITS SUPPORTS, DIRECT CONTACT OR CLOSE PROXIMITY TO THE WIRE ROPE WHICH MAY CAUSE FRICTIONAL WEAR, IMPACT TO THE ANCHORAGE POINTS IN ANY WAY, OR TO IMPEDE/BLOCK ITS INTENDED USE. ANY COMPROMISED SAFETY CLIMB, INCLUDING EXISTING CONDITIONS MUST BE TAGGED OUT AND REPORTED TO YOUR DISH Wireless L.L.C. AND DISH Wireless L.L.C. AND TOWER OWNER POC OR CALL THE NOC TO GENERATE A SAFETY CLIMB MAINTENANCE AND CONTRACTOR NOTICE TICKET.

4. ALL CONSTRUCTION MEANS AND METHODS; INCLUDING BUT NOT LIMITED TO, ERECTION PLANS, RIGGING PLANS, CLIMBING PLANS, AND RESCUE PLANS SHALL BE THE RESPONSIBILITY OF THE GENERAL CONTRACTOR RESPONSIBLE FOR THE EXECUTION OF THE WORK CONTAINED HEREIN, AND SHALL MEET ANSI/ASSE A10.48 (LATEST EDITION); FEDERAL, STATE, AND LOCAL REGULATIONS; AND ANY APPLICABLE INDUSTRY CONSENSUS STANDARDS RELATED TO THE CONSTRUCTION ACTIVITIES BEING PERFORMED. ALL RIGGING PLANS SHALL ADHERE TO ANSI/ASSE A10.48 (LATEST EDITION) AND DISH Wireless L.L.C. AND TOWER OWNER STANDARDS, INCLUDING THE REQUIRED INVOLVEMENT OF A QUALIFIED ENGINEER FOR CLASS IV CONSTRUCTION, TO CERTIFY THE SUPPORTING STRUCTURE(S) IN ACCORDANCE WITH ANSI/TIA-322 (LATEST EDITION).

6. IF THE SPECIFIED EQUIPMENT CAN NOT BE INSTALLED AS SHOWN ON THESE DRAWINGS, THE CONTRACTOR SHALL PROPOSE AN ALTERNATIVE INSTALLATION FOR APPROVAL BY DISH Wireless L.L.C. AND TOWER OWNER PRIOR TO PROCEEDING WITH ANY SUCH CHANGE OF INSTALLATION.

8. THE CONTRACTOR SHALL INSTALL ALL EQUIPMENT AND MATERIALS IN ACCORDANCE WITH MANUFACTURER'S RECOMMENDATIONS UNLESS SPECIFICALLY STATED OTHERWISE.

10. ALL EXISTING ACTIVE SEWER, WATER, GAS, ELECTRIC AND OTHER UTILITIES WHERE ENCOUNTERED IN THE WORK, SHALL BE PROTECTED AT ALL TIMES AND WHERE REQUIRED FOR THE PROPER EXECUTION OF THE WORK, SHALL BE RELOCATED AS DIRECTED BY CONTRACTOR. EXTREME CAUTION SHOULD BE USED BY THE CONTRACTOR WHEN EXCAVATING OR DRILLING PIERS AROUND OR NEAR UTILITIES. CONTRACTOR SHALL PROVIDE SAFETY TRAINING FOR THE WORKING CREW. THIS WILL INCLUDE BUT NOT BE LIMITED TO A) FALL PROTECTION B) CONFINED SPACE C) ELECTRICAL SAFETY D) TRENCHING AND EXCAVATION E) CONSTRUCTION SAFETY PROCEDURES.

12. CONTRACTOR SHALL KEEP THE SITE FREE FROM ACCUMULATING WASTE MATERIAL, DEBRIS, AND TRASH AT THE COMPLETION OF THE WORK. IF NECESSARY, RUBBISH, STUMPS, DEBRIS, STICKS, STONES AND OTHER REFUSE SHALL BE REMOVED FROM THE SITE AND DISPOSED OF LEGALLY.

14. THE CONTRACTOR SHALL PROVIDE SITE SIGNAGE IN ACCORDANCE WITH THE TECHNICAL SPECIFICATION FOR SITE SIGNAGE REQUIRED BY LOCAL JURISDICTION AND SIGNAGE REQUIRED ON INDIVIDUAL PIECES OF EQUIPMENT, ROOMS, AND SHELTERS.

16. THE SUB GRADE SHALL BE COMPACTED AND BROUGHT TO A SMOOTH UNIFORM GRADE PRIOR TO FINISHED SURFACE APPLICATION.

18. CONTRACTOR SHALL MINIMIZE DISTURBANCE TO EXISTING SITE DURING CONSTRUCTION. EROSION CONTROL MEASURES, IF REQUIRED DURING CONSTRUCTION, SHALL BE IN CONFORMANCE WITH THE LOCAL GUIDELINES FOR EROSION AND SEDIMENT CONTROL.

20. CONTRACTOR SHALL LEGALLY AND PROPERLY DISPOSE OF ALL SCRAP MATERIALS SUCH AS COAXIAL CABLES AND OTHER ITEMS REMOVED FROM THE EXISTING FACILITY. ANTENNAS AND RADIOS REMOVED SHALL BE RETURNED TO THE OWNER'S DESIGNATED LOCATION.

22. NO FILL OR EMBANKMENT MATERIAL SHALL BE PLACED ON FROZEN GROUND. FROZEN MATERIALS, SNOW OR ICE SHALL NOT BE PLACED IN ANY FILL OR EMBANKMENT.

2. THESE DRAWINGS HAVE BEEN PREPARED USING STANDARDS OF PROFESSIONAL CARE AND COMPLETENESS NORMALLY EXERCISED UNDER SIMILAR CIRCUMSTANCES BY REPUTABLE ENGINEERS IN THIS OR SIMILAR LOCALITIES. IT IS ASSUMED THAT THE WORK DEPICTED WILL BE PERFORMED BY AN EXPERIENCED CONTRACTOR AND/OR WORKPEOPLE WHO HAVE A WORKING KNOWLEDGE OF THE APPLICABLE CODE STANDARDS AND REQUIREMENTS AND OF INDUSTRY ACCEPTED STANDARD GOOD PRACTICE. AS NOT EVERY CONDITION OR ELEMENT IS (OR CAN BE) EXPLICITLY SHOWN ON THESE DRAWINGS, THE CONTRACTOR SHALL USE INDUSTRY ACCEPTED STANDARD GOOD PRACTICE FOR MISCELLANEOUS WORK NOT EXPLICITLY SHOWN.

4. NOTES AND DETAILS IN THE CONSTRUCTION DRAWINGS SHALL TAKE PRECEDENCE OVER GENERAL NOTES AND TYPICAL DETAILS. WHERE NO DETAILS ARE SHOWN, CONSTRUCTION SHALL CONFORM TO SIMILAR WORK ON THE PROJECT, AND/OR AS PROVIDED FOR IN THE CONTRACT DOCUMENTS. WHERE DISCREPANCIES OCCUR BETWEEN PLANS, DETAILS, GENERAL NOTES, AND SPECIFICATIONS, THE GREATER, MORE STRICT REQUIREMENTS, SHALL GOVERN. IF FURTHER CLARIFICATION IS REQUIRED CONTACT THE ENGINEER OF RECORD.

6. PRIOR TO THE SUBMISSION OF BIDS, THE BIDDING CONTRACTOR SHALL VISIT THE CELL SITE TO FAMILIARIZE WITH THE EXISTING CONDITIONS AND TO CONFIRM THAT THE WORK CAN BE ACCOMPLISHED AS SHOWN ON THE CONSTRUCTION DRAWINGS. ANY DISCREPANCY FOUND SHALL BE BROUGHT TO THE ATTENTION OF CARRIER POC AND TOWER OWNER.

8. UNLESS NOTED OTHERWISE, THE WORK SHALL INCLUDE FURNISHING MATERIALS, EQUIPMENT, APPURTENANCES AND LABOR NECESSARY TO COMPLETE ALL INSTALLATIONS AS INDICATED ON THE DRAWINGS.

10. IF THE SPECIFIED EQUIPMENT CAN NOT BE INSTALLED AS SHOWN ON THESE DRAWINGS, THE CONTRACTOR SHALL PROPOSE AN ALTERNATIVE INSTALLATION FOR APPROVAL BY THE CARRIER AND TOWER OWNER PRIOR TO PROCEEDING WITH ANY SUCH CHANGE OF INSTALLATION.

11. CONTRACTOR IS TO PERFORM A SITE INVESTIGATION, BEFORE SUBMITTING BIDS, TO DETERMINE THE BEST ROUTING OF ALL CONDUITS FOR POWER, AND TELCO AND FOR GROUNDING CABLES AS SHOWN IN THE POWER, TELCO, AND GROUNDING PLAN DRAWINGS.

12. THE CONTRACTOR SHALL PROTECT EXISTING IMPROVEMENTS, PAVEMENTS, CURBS, LANDSCAPING AND STRUCTURES. ANY DAMAGED PART SHALL BE REPAIRED AT CONTRACTOR'S EXPENSE TO THE SATISFACTION OF DISH Wireless L.L.C. AND TOWER OWNER

13. CONTRACTOR SHALL LEGALLY AND PROPERLY DISPOSE OF ALL SCRAP MATERIALS SUCH AS COAXIAL CABLES AND OTHER ITEMS REMOVED FROM THE EXISTING FACILITY. ANTENNAS REMOVED SHALL BE RETURNED TO THE OWNER'S DESIGNATED LOCATION.

14. CONTRACTOR SHALL LEAVE PREMISES IN CLEAN CONDITION. TRASH AND DEBRIS SHOULD BE REMOVED FROM SITE ON A DAILY BASIS.

5701 SOUTH SANTA FE DRIVE
LITTLETON, CO 80120



MTS TELECOM, L.L.C.
COA# 24GA28343300
EXPIRES 8/31/22

IT IS A VIOLATION OF LAW FOR ANY PERSON,
UNLESS THEY ARE ACTING UNDER THE DIRECTION
OF A LICENSED PROFESSIONAL ENGINEER,
TO ALTER THIS DOCUMENT.

DRAWN BY:	CHECKED BY:	APPROVED BY:
-----------	-------------	--------------

JJR/ANP	JJR/LR	PDS
---------	--------	-----

RFDS REV #: 3

CONSTRUCTION
DOCUMENTS

SUBMITTALS		
REV	DATE	DESCRIPTION
A	6/15/21	ISSUED FOR REVIEW
0	10/12/21	ISSUED FOR CONSTRUCTION
1	12/20/21	ISSUED FOR CONSTRUCTION
2	5/16/22	ISSUED FOR CONSTRUCTION
3	5/26/22	ISSUED FOR CONSTRUCTION

A&E PROJECT NUMBER

109333.005.01

DISH Wireless L.L.C.
PROJECT INFORMATION
NJJER01580A
2 GOWIN STREET
SAYREVILLE, NJ 08872
BLOCK 333.01 LOT 7

SHEET TITLE

GENERAL NOTES

SHEET NUMBER

GN-2

CONCRETE, FOUNDATIONS, AND REINFORCING STEEL:

1. ALL CONCRETE WORK SHALL BE IN ACCORDANCE WITH THE ACI 301, ACI 318, ACI 336, ASTM A184, ASTM A185 AND THE DESIGN AND CONSTRUCTION SPECIFICATION FOR CAST-IN-PLACE CONCRETE.
2. UNLESS NOTED OTHERWISE, SOIL BEARING PRESSURE USED FOR DESIGN OF SLABS AND FOUNDATIONS IS ASSUMED TO BE 1000 psf.
3. ALL CONCRETE SHALL HAVE A MINIMUM COMPRESSIVE STRENGTH (f’c) OF 3000 psi AT 28 DAYS, UNLESS NOTED OTHERWISE. NO MORE THAN 90 MINUTES SHALL ELAPSE FROM BATCH TIME TO TIME OF PLACEMENT UNLESS APPROVED BY THE ENGINEER OF RECORD. TEMPERATURE OF CONCRETE SHALL NOT EXCEED 90°f AT TIME OF PLACEMENT.
4. CONCRETE EXPOSED TO FREEZE-THAW CYCLES SHALL CONTAIN AIR ENTRAINING ADMIXTURES. AMOUNT OF AIR ENTRAINMENT TO BE BASED ON SIZE OF AGGREGATE AND F3 CLASS EXPOSURE (VERY SEVERE). CEMENT USED TO BE TYPE II PORTLAND CEMENT WITH A MAXIMUM WATER-TO-CEMENT RATIO (W/C) OF 0.45.
5. ALL STEEL REINFORCING SHALL CONFORM TO ASTM A615. ALL WELDED WIRE FABRIC (WWF) SHALL CONFORM TO ASTM A185. ALL SPLICES SHALL BE CLASS "B" TENSION SPLICES, UNLESS NOTED OTHERWISE. ALL HOOKS SHALL BE STANDARD 90 DEGREE HOOKS, UNLESS NOTED OTHERWISE. YIELD STRENGTH (Fy) OF STANDARD DEFORMED BARS ARE AS FOLLOWS:

#4 BARS AND SMALLER 40 ksi

#5 BARS AND LARGER 60 ksi
6. THE FOLLOWING MINIMUM CONCRETE COVER SHALL BE PROVIDED FOR REINFORCING STEEL UNLESS SHOWN OTHERWISE ON DRAWINGS:

• CONCRETE CAST AGAINST AND PERMANENTLY EXPOSED TO EARTH 3"

• CONCRETE EXPOSED TO EARTH OR WEATHER:

• #6 BARS AND LARGER 2"

• #5 BARS AND SMALLER 1-1/2"

• CONCRETE NOT EXPOSED TO EARTH OR WEATHER:

• SLAB AND WALLS 3/4"

• BEAMS AND COLUMNS 1-1/2"

7. A TOOLED EDGE OR A 3/4" CHAMFER SHALL BE PROVIDED AT ALL EXPOSED EDGES OF CONCRETE, UNLESS NOTED OTHERWISE, IN ACCORDANCE WITH ACI 301 SECTION 4.2.4.
- ELECTRICAL INSTALLATION NOTES:
1. ALL ELECTRICAL WORK SHALL BE PERFORMED IN ACCORDANCE WITH THE PROJECT SPECIFICATIONS, NEC AND ALL APPLICABLE FEDERAL, STATE, AND LOCAL CODES/ORDINANCES.

2. CONDUIT ROUTINGS ARE SCHEMATIC. CONTRACTOR SHALL INSTALL CONDUITS SO THAT ACCESS TO EQUIPMENT IS NOT BLOCKED AND TRIP HAZARDS ARE ELIMINATED.

3. WIRING, RACEWAY AND SUPPORT METHODS AND MATERIALS SHALL COMPLY WITH THE REQUIREMENTS OF THE NEC.

4. ALL CIRCUITS SHALL BE SEGREGATED AND MAINTAIN MINIMUM CABLE SEPARATION AS REQUIRED BY THE NEC.

4.1. ALL EQUIPMENT SHALL BEAR THE UNDERWRITERS LABORATORIES LABEL OF APPROVAL, AND SHALL CONFORM TO REQUIREMENT OF THE NATIONAL ELECTRICAL CODE.

4.2. ALL OVERCURRENT DEVICES SHALL HAVE AN INTERRUPTING CURRENT RATING THAT SHALL BE GREATER THAN THE SHORT CIRCUIT CURRENT TO WHICH THEY ARE SUBJECTED, 22,000 AIC MINIMUM. VERIFY AVAILABLE SHORT CIRCUIT CURRENT DOES NOT EXCEED THE RATING OF ELECTRICAL EQUIPMENT IN ACCORDANCE WITH ARTICLE 110.24 NEC OR THE MOST CURRENT ADOPTED CODE PRE THE GOVERNING JURISDICTION.

5. EACH END OF EVERY POWER PHASE CONDUCTOR, GROUNDING CONDUCTOR, AND TELCO CONDUCTOR OR CABLE SHALL BE LABELED WITH COLOR-CODED INSULATION OR ELECTRICAL TAPE (3M BRAND, 1/2" PLASTIC ELECTRICAL TAPE WITH UV PROTECTION, OR EQUAL). THE IDENTIFICATION METHOD SHALL CONFORM WITH NEC AND OSHA.

6. ALL ELECTRICAL COMPONENTS SHALL BE CLEARLY LABELED WITH LAMICOID TAGS SHOWING THEIR RATED VOLTAGE, PHASE CONFIGURATION, WIRE CONFIGURATION, POWER OR AMPACITY RATING AND BRANCH CIRCUIT ID NUMBERS (i.e. PANEL BOARD AND CIRCUIT ID'S).

7. PANEL BOARDS (ID NUMBERS) SHALL BE CLEARLY LABELED WITH PLASTIC LABELS.

8. TIE WRAPS ARE NOT ALLOWED.

9. ALL POWER AND EQUIPMENT GROUND WIRING IN TUBING OR CONDUIT SHALL BE SINGLE COPPER CONDUCTOR (#14 OR LARGER) WITH TYPE THHW, THWN, THWN-2, XHHW, XHHW-2, THW, THW-2, RHW, OR RHW-2 INSULATION UNLESS OTHERWISE SPECIFIED.

10. SUPPLEMENTAL EQUIPMENT GROUND WIRING LOCATED INDOORS SHALL BE SINGLE COPPER CONDUCTOR (#6 OR LARGER) WITH TYPE THHW, THWN, THWN-2, XHHW, XHHW-2, THW, THW-2, RHW, OR RHW-2 INSULATION UNLESS OTHERWISE SPECIFIED.

11. POWER AND CONTROL WIRING IN FLEXIBLE CORD SHALL BE MULTI-CONDUCTOR, TYPE SOOW CORD (#14 OR LARGER) UNLESS OTHERWISE SPECIFIED.

12. POWER AND CONTROL WIRING FOR USE IN CABLE TRAY SHALL BE MULTI-CONDUCTOR, TYPE TC CABLE (#14 OR LARGER), WITH TYPE THHW, THWN, THWN-2, XHHW, XHHW-2, THW, THW-2, RHW, OR RHW-2 INSULATION UNLESS OTHERWISE SPECIFIED.

13. ALL POWER AND GROUNDING CONNECTIONS SHALL BE CRIMP-STYLE, COMPRESSION WIRE LUGS AND WIRE NUTS BY THOMAS AND BETTS (OR EQUAL). LUGS AND WIRE NUTS SHALL BE RATED FOR OPERATION NOT LESS THAN 75° C (90° C IF AVAILABLE).

14. RACEWAY AND CABLE TRAY SHALL BE LISTED OR LABELED FOR ELECTRICAL USE IN ACCORDANCE WITH NEMA, UL, ANSI/IEEE AND NEC.

15. ELECTRICAL METALLIC TUBING (EMT), INTERMEDIATE METAL CONDUIT (IMC), OR RIGID METAL CONDUIT (RMC) SHALL BE USED FOR EXPOSED INDOOR LOCATIONS.
16. ELECTRICAL METALLIC TUBING (EMT) OR METAL-CLAD CABLE (MC) SHALL BE USED FOR CONCEALED INDOOR LOCATIONS.

17. SCHEDULE 40 PVC UNDERGROUND ON STRAIGHTS AND SCHEDULE 80 PVC FOR ALL ELBOWS/90s AND ALL APPROVED ABOVE GRADE PVC CONDUIT.

18. LIQUID-TIGHT FLEXIBLE METALLIC CONDUIT (LIQUID-TITE FLEX) SHALL BE USED INDOORS AND OUTDOORS, WHERE VIBRATION OCCURS OR FLEXIBILITY IS NEEDED.

19. CONDUIT AND TUBING FITTINGS SHALL BE THREADED OR COMPRESSION-TYPE AND APPROVED FOR THE LOCATION USED. SET SCREW FITTINGS ARE NOT ACCEPTABLE.

20. CABINETS, BOXES AND WIRE WAYS SHALL BE LABELED FOR ELECTRICAL USE IN ACCORDANCE WITH NEMA, UL, ANSI/IEEE AND THE NEC.

21. WIREWAYS SHALL BE METAL WITH AN ENAMEL FINISH AND INCLUDE A HINGED COVER, DESIGNED TO SWING OPEN DOWNWARDS (WIREMOLD SPECMATE WIREWAY).

22. SLOTTED WIRING DUCT SHALL BE PVC AND INCLUDE COVER (PANDUIT TYPE E OR EQUAL).

23. CONDUITS SHALL BE FASTENED SECURELY IN PLACE WITH APPROVED NON-PERFORATED STRAPS AND HANGERS. EXPLOSIVE DEVICES (i.e. POWDER-ACTUATED) FOR ATTACHING HANGERS TO STRUCTURE WILL NOT BE PERMITTED. CLOSELY FOLLOW THE LINES OF THE STRUCTURE, MAINTAIN CLOSE PROXIMITY TO THE STRUCTURE AND KEEP CONDUITS IN TIGHT ENVELOPES. CHANGES IN DIRECTION TO ROUTE AROUND OBSTACLES SHALL BE MADE WITH CONDUIT OUTLET BODIES. CONDUIT SHALL BE INSTALLED IN A NEAT AND WORKMANLIKE MANNER. PARALLEL AND PERPENDICULAR TO STRUCTURE WALL AND CEILING LINES. ALL CONDUIT SHALL BE FISHED TO CLEAR OBSTRUCTIONS. ENDS OF CONDUITS SHALL BE TEMPORARILY CAPPED FLUSH TO FINISH GRADE TO PREVENT CONCRETE, PLASTER OR DIRT FROM ENTERING. CONDUITS SHALL BE RIGIDLY CLAMPED TO BOXES BY GALVANIZED MALLEABLE IRON BUSHING ON INSIDE AND GALVANIZED MALLEABLE IRON LOCKNUT ON OUTSIDE AND INSIDE.

24. EQUIPMENT CABINETS, TERMINAL BOXES, JUNCTION BOXES AND PULL BOXES SHALL BE GALVANIZED OR EPOXY-COATED SHEET STEEL. SHALL MEET OR EXCEED UL 50 AND BE RATED NEMA 1 (OR BETTER) FOR INTERIOR LOCATIONS AND NEMA 3 (OR BETTER) FOR EXTERIOR LOCATIONS.

25. METAL RECEPTACLE, SWITCH AND DEVICE BOXES SHALL BE GALVANIZED, EPOXY-COATED OR NON-CORRODING; SHALL MEET OR EXCEED UL 514A AND NEMA OS 1 AND BE RATED NEMA 1 (OR BETTER) FOR INTERIOR LOCATIONS AND WEATHER PROTECTED (WP OR BETTER) FOR EXTERIOR LOCATIONS.

26. NONMETALLIC RECEPTACLE, SWITCH AND DEVICE BOXES SHALL MEET OR EXCEED NEMA OS 2 (NEWEST REVISION) AND BE RATED NEMA 1 (OR BETTER) FOR INTERIOR LOCATIONS AND WEATHER PROTECTED (WP OR BETTER) FOR EXTERIOR LOCATIONS.

27. THE CONTRACTOR SHALL NOTIFY AND OBTAIN NECESSARY AUTHORIZATION FROM THE CARRIER AND/OR DISH Wireless L.L.C. AND TOWER OWNER BEFORE COMMENCING WORK ON THE AC POWER DISTRIBUTION PANELS.

28. THE CONTRACTOR SHALL PROVIDE NECESSARY TAGGING ON THE BREAKERS, CABLES AND DISTRIBUTION PANELS IN ACCORDANCE WITH THE APPLICABLE CODES AND STANDARDS TO SAFEGUARD LIFE AND PROPERTY.

29. INSTALL LAMICOID LABEL ON THE METER CENTER TO SHOW "DISH Wireless L.L.C.".

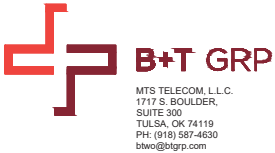
30. ALL EMPTY/SPARE CONDUITS THAT ARE INSTALLED ARE TO HAVE A METERED MULE TAPE PULL CORD INSTALLED.
-
- 5701 SOUTH SANTA FE DRIVE
LITTLETON, CO 80120
-
-
- MTS TELECOM, L.L.C.
COA# 24GA28343300
EXPIRES 8/31/22
- IT IS A VIOLATION OF LAW FOR ANY PERSON, UNLESS THEY ARE ACTING UNDER THE DIRECTION OF A LICENSED PROFESSIONAL ENGINEER, TO ALTER THIS DOCUMENT.
- | | | |
|-----------|-------------|--------------|
| DRAWN BY: | CHECKED BY: | APPROVED BY: |
| JJR/ANP | JJR/LR | PDS |
- RFDS REV #: 3
- CONSTRUCTION DOCUMENTS
- | SUBMITTALS | | |
|------------|----------|-------------------------|
| REV | DATE | DESCRIPTION |
| A | 6/15/21 | ISSUED FOR REVIEW |
| 0 | 10/12/21 | ISSUED FOR CONSTRUCTION |
| 1 | 12/20/21 | ISSUED FOR CONSTRUCTION |
| 2 | 5/16/22 | ISSUED FOR CONSTRUCTION |
| 3 | 5/26/22 | ISSUED FOR CONSTRUCTION |
| | | |
| | | |
- A&E PROJECT NUMBER
109333.005.01
- DISH Wireless L.L.C.
PROJECT INFORMATION
NJJER01580A
2 GOWIN STREET
SAYREVILLE, NJ 08872
BLOCK 333.01 LOT 7
- SHEET TITLE
GENERAL NOTES
- SHEET NUMBER
GN-3

GROUNDING NOTES:

1. ALL GROUND ELECTRODE SYSTEMS (INCLUDING TELECOMMUNICATION, RADIO, LIGHTNING PROTECTION AND AC POWER GES’S) SHALL BE BONDED TOGETHER AT OR BELOW GRADE, BY TWO OR MORE COPPER BONDING CONDUCTORS IN ACCORDANCE WITH THE NEC.
2. THE CONTRACTOR SHALL PERFORM IEEE FALL-OF-POTENTIAL RESISTANCE TO EARTH TESTING (PER IEEE 1100 AND 81) FOR GROUND ELECTRODE SYSTEMS, THE CONTRACTOR SHALL FURNISH AND INSTALL SUPPLEMENTAL GROUND ELECTRODES AS NEEDED TO ACHIEVE A TEST RESULT OF 5 OHMS OR LESS.
3. THE CONTRACTOR IS RESPONSIBLE FOR PROPERLY SEQUENCING GROUNDING AND UNDERGROUND CONDUIT INSTALLATION AS TO PREVENT ANY LOSS OF CONTINUITY IN THE GROUNDING SYSTEM OR DAMAGE TO THE CONDUIT AND PROVIDE TESTING RESULTS.
4. METAL CONDUIT AND TRAY SHALL BE GROUNDED AND MADE ELECTRICALLY CONTINUOUS WITH LISTED BONDING FITTINGS OR BY BONDING ACROSS THE DISCONTINUITY WITH #6 COPPER WIRE UL APPROVED GROUNDING TYPE CONDUIT CLAMPS.
5. METAL RACEWAY SHALL NOT BE USED AS THE NEC REQUIRED EQUIPMENT GROUND CONDUCTOR. STRANDED COPPER CONDUCTORS WITH GREEN INSULATION, SIZED IN ACCORDANCE WITH THE NEC, SHALL BE FURNISHED AND INSTALLED WITH THE POWER CIRCUITS TO BTS EQUIPMENT.
6. EACH CABINET FRAME SHALL BE DIRECTLY CONNECTED TO THE MASTER GROUND BAR WITH GREEN INSULATED SUPPLEMENTAL EQUIPMENT GROUND WIRES, #6 STRANDED COPPER OR LARGER FOR INDOOR BTS; #2 BARE SOLID TINNED COPPER FOR OUTDOOR BTS.
7. CONNECTIONS TO THE GROUND BUS SHALL NOT BE DOUBLED UP OR STACKED BACK TO BACK CONNECTIONS ON OPPOSITE SIDE OF THE GROUND BUS ARE PERMITTED.
8. ALL EXTERIOR GROUND CONDUCTORS BETWEEN EQUIPMENT/GROUND BARS AND THE GROUND RING SHALL BE #2 SOLID TINNED COPPER UNLESS OTHERWISE INDICATED.
9. ALUMINUM CONDUCTOR OR COPPER CLAD STEEL CONDUCTOR SHALL NOT BE USED FOR GROUNDING CONNECTIONS.
10. USE OF 90° BENDS IN THE PROTECTION GROUNDING CONDUCTORS SHALL BE AVOIDED WHEN 45° BENDS CAN BE ADEQUATELY SUPPORTED.
11. EXOTHERMIC WELDS SHALL BE USED FOR ALL GROUNDING CONNECTIONS BELOW GRADE.
12. ALL GROUND CONNECTIONS ABOVE GRADE (INTERIOR AND EXTERIOR) SHALL BE FORMED USING HIGH PRESS CRIMPS.
13. COMPRESSION GROUND CONNECTIONS MAY BE REPLACED BY EXOTHERMIC WELD CONNECTIONS.
14. ICE BRIDGE BONDING CONDUCTORS SHALL BE EXOTHERMICALLY BONDED OR BOLTED TO THE BRIDGE AND THE TOWER GROUND BAR.
15. APPROVED ANTIOXIDANT COATINGS (i.e. CONDUCTIVE GEL OR PASTE) SHALL BE USED ON ALL COMPRESSION AND BOLTED GROUND CONNECTIONS.
16. ALL EXTERIOR GROUND CONNECTIONS SHALL BE COATED WITH A CORROSION RESISTANT MATERIAL.
17. MISCELLANEOUS ELECTRICAL AND NON-ELECTRICAL METAL BOXES, FRAMES AND SUPPORTS SHALL BE BONDED TO THE GROUND RING, IN ACCORDANCE WITH THE NEC.
18. BOND ALL METALLIC OBJECTS WITHIN 6 ft OF MAIN GROUND RING WITH (1) #2 BARE SOLID TINNED COPPER GROUND CONDUCTOR.
19. GROUND CONDUCTORS USED FOR THE FACILITY GROUNDING AND LIGHTNING PROTECTION SYSTEMS SHALL NOT BE ROUTED THROUGH METALLIC OBJECTS THAT FORM A RING AROUND THE CONDUCTOR, SUCH AS METALLIC CONDUITS, METAL SUPPORT CLIPS OR SLEEVES THROUGH WALLS OR FLOORS. WHEN IT IS REQUIRED TO BE HOUSED IN CONDUIT TO MEET CODE REQUIREMENTS OR LOCAL CONDITIONS, NON-METALLIC MATERIAL SUCH AS PVC CONDUIT SHALL BE USED. WHERE USE OF METAL CONDUIT IS UNAVOIDABLE (i.e., NONMETALLIC CONDUIT PROHIBITED BY LOCAL CODE) THE GROUND CONDUCTOR SHALL BE BONDED TO EACH END OF THE METAL CONDUIT.
20. ALL GROUNDS THAT TRANSITION FROM BELOW GRADE TO ABOVE GRADE MUST BE #2 BARE SOLID TINNED COPPER IN 3/4” NON-METALLIC, FLEXIBLE CONDUIT FROM 24” BELOW GRADE TO WITHIN 3” TO 6” OF CAD-WELD TERMINATION POINT. THE EXPOSED END OF THE CONDUIT MUST BE SEALED WITH SILICONE CAULK. (ADD TRANSITIONING GROUND STANDARD DETAIL AS WELL).
21. BUILDINGS WHERE THE MAIN GROUNDING CONDUCTORS ARE REQUIRED TO BE ROUTED TO GRADE, THE CONTRACTOR SHALL ROUTE TWO GROUNDING CONDUCTORS FROM THE ROOFTOP, TOWERS, AND WATER TOWERS GROUNDING RING, TO THE EXISTING GROUNDING SYSTEM, THE GROUNDING CONDUCTORS SHALL NOT BE SMALLER THAN 2/0 COPPER. ROOFTOP GROUNDING RING SHALL BE BONDED TO THE EXISTING GROUNDING SYSTEM, THE BUILDING STEEL COLUMNS, LIGHTNING PROTECTION SYSTEM, AND BUILDING MAIN WATER LINE (FERROUS OR NONFERROUS METAL PIPING ONLY). DO NOT ATTACH GROUNDING TO FIRE SPRINKLER SYSTEM PIPES.



5701 SOUTH SANTA FE DRIVE
LITTLETON, CO 80120



MTS TELECOM, L.L.C.
COA# 24GA28343300
EXPIRES 8/31/22

IT IS A VIOLATION OF LAW FOR ANY PERSON,
UNLESS THEY ARE ACTING UNDER THE DIRECTION
OF A LICENSED PROFESSIONAL ENGINEER,
TO ALTER THIS DOCUMENT.

DRAWN BY: CHECKED BY: APPROVED BY:

JJR/ANP JJR/LR PDS

RFDS REV #: 3

CONSTRUCTION
DOCUMENTS

SUBMITTALS		
REV	DATE	DESCRIPTION
A	6/15/21	ISSUED FOR REVIEW
0	10/12/21	ISSUED FOR CONSTRUCTION
1	12/20/21	ISSUED FOR CONSTRUCTION
2	5/16/22	ISSUED FOR CONSTRUCTION
3	5/26/22	ISSUED FOR CONSTRUCTION

A&E PROJECT NUMBER

109333.005.01

DISH Wireless L.L.C.
PROJECT INFORMATION

NJJER01580A
2 GOWIN STREET
SAYREVILLE, NJ 08872
BLOCK 333.01 LOT 7

SHEET TITLE

GENERAL NOTES

SHEET NUMBER

GN-4